



HW

ESTATE AGENTS

Highcroft Villas, Brighton
£375,000



18f Highcroft Villas

Brighton, Brighton

Spacious two bedroom apartment with open plan living, character features, park views, modern kitchen, two bathrooms, and private landing. Close to Brighton centre.

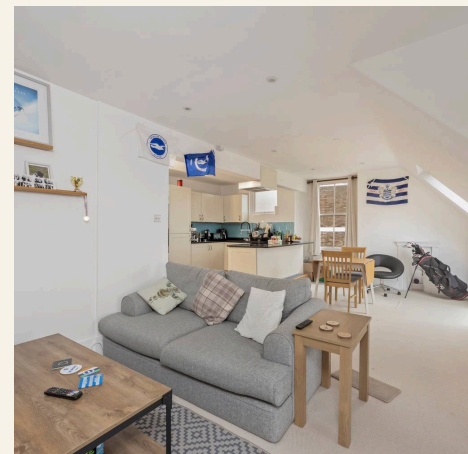
Council Tax band: B

Tenure: Leasehold

EPC Energy Efficiency Rating: E

EPC Environmental Impact Rating: E

- Guide Price: £375,000 - £400,000
- Two Double Bedrooms
- Modern Fitted Kitchen With Breakfast Bar
- Contemporary Bathroom
- Ensuite To Master Bedroom
- Open Plan Living Room
- Downland Views
- Close to Local Shops
- Chain Free
- Close to Mainline Station



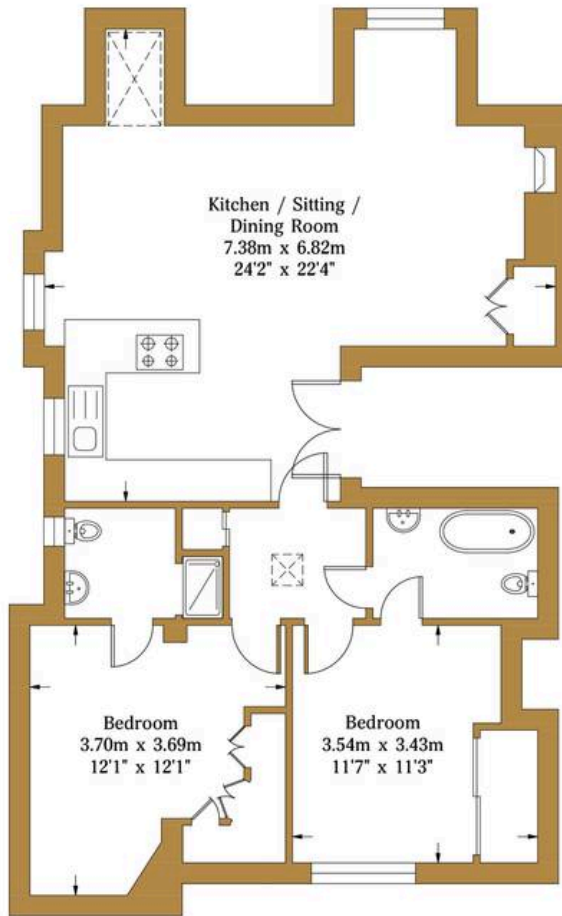


Highcroft Villas

Approx. Gross Internal Area:- 72.32 sq.m. 778.44 sq.ft.

HW

ESTATE AGENTS



Second Floor
Approximate Floor Area
778.44 sq ft
(72.32 sq m)



Illustration for identification purposes only, measurements are approximate, not to scale.

© hwstateagents



HW Estate Agents

HW Estate Agents, 80 Goldstone Villas, Hove - BN3 3RU

01273 359000 · hove@hwestateagents.co.uk · www.hwestateagents.co.uk

HW

ESTATE AGENTS