

## Hopton Road, SW16

£380,000

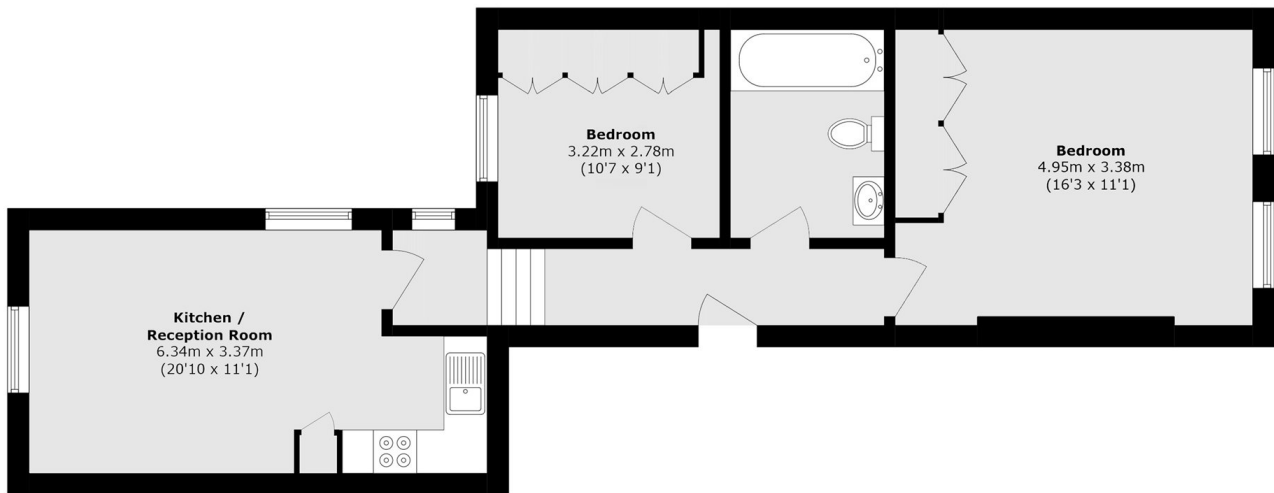
OFFERS OVER Set within an attractive Victorian house, this two-bedroom period conversion offers well proportioned accommodation, featuring two bedrooms, a modern kitchen and bathroom, and a bright open-plan living/kitchen area ideal for entertaining.

Conveniently located close to Streatham Common and Streatham railway station, the property offers excellent transport links into London Bridge and Blackfriars station. Streatham High Road provides a wide selection of shops, bars, and restaurants, while the open green spaces of Streatham Common are also nearby.

### Features

- Two Double Bedrooms
- Period Property
- Modern Kitchen/Bathroom
- No Onward Chain
- Open Plan Kitchen/Living Room
- Split Level

# Hopton Road, London, SW16



Total area (approx.): 55.6 sq. m (598.5 sq. ft)