



Connells

Meadow View
Stoford Yeovil



Property Description

Connells are delighted to welcome to the market this well-presented three-bedroom semi-detached home, peacefully situated within a quiet cul-de-sac in the sought-after village of Stoford.

The property features a spacious kitchen, a bright and open lounge/diner, a charming conservatory, three well-proportioned bedrooms, and a family bathroom—making it an ideal home for families or those looking for village living with excellent connections.

Meadow View is situated in the village of Stoford, on the southern edge of Yeovil, offering a pleasant residential setting with convenient access to local amenities, transport links, and countryside surroundings. Access to nearby countryside walks and village green spaces within Stoford.

Yeovil Country Park and Tintinhull Garden (National Trust) are both within short driving distance, offering scenic outdoor leisure opportunities.

This lovely home offers the perfect blend of peaceful village living and convenient access to local services, transport links, and schools—making it a fantastic opportunity within a highly desirable Somerset location.

Entrance Porch

A welcoming entrance porch, featuring a double-glazed front door, allowing natural light to brighten the space while providing excellent insulation.

Entrance Hall

A bright entrance hall featuring a double-glazed front door, a fitted radiator for warmth, and a useful built-in storage cupboard.

Lounge / Diner

A spacious lounge/dining area featuring a double-glazed window to the front and patio doors opening onto the rear garden. The room includes a TV point, a wood burner for added warmth and character, two radiators, and access doors leading to the side of the property and the conservatory.

Kitchen

A well-equipped fitted kitchen offering a range of wall and base units, complemented by a double-glazed window to the side. The space includes provision for a washing machine and fridge/freezer, an eye-level electric double oven, electric hob with extractor fan, and a sink with drainer. A double-glazed door provides access to the side of the property, and the room also features a radiator and part-tiled walls.

Conservatory

A UPVC conservatory featuring double-glazed windows to the side and rear, a radiator for year-round comfort, and French doors opening directly onto the garden.

Landing

Landing area with access to the loft.

Bedroom One

A well-proportioned bedroom featuring a double-glazed window overlooking the rear aspect, a radiator, and triple fitted wardrobes providing ample storage.

Bedroom Two

A comfortable second bedroom with a double-glazed window to the front and a radiator.

Bedroom Three

A well-lit bedroom featuring a double-glazed window to the front and a radiator.

Bathroom

A well-appointed bathroom featuring a double-glazed window to the rear, a bath with shower over, WC, wash hand basin, and a heated towel rail. The walls are part tiled for easy maintenance.

Outside

Front Garden

The front of the property features a driveway providing off-road parking.

Rear Garden

Fenced rear garden with a patio, shingle, gas bottles, side access, outside tap and palm tree.

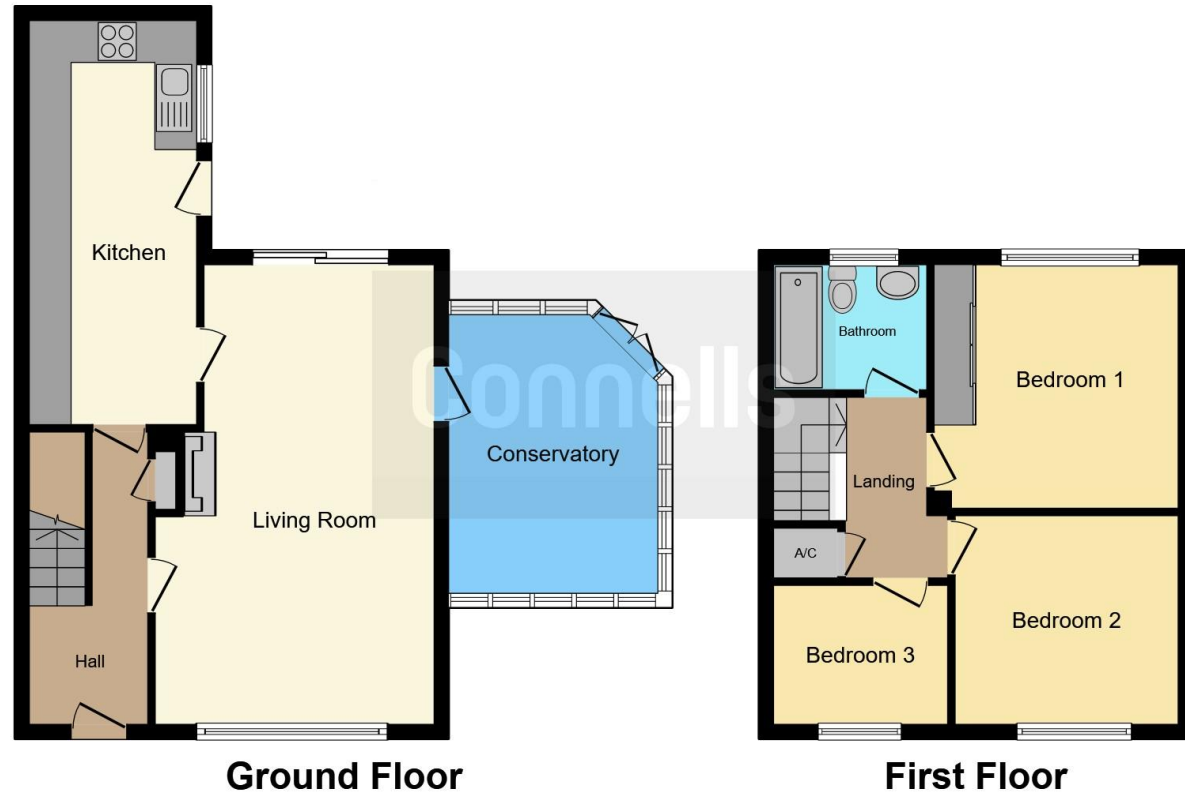
Garage

Single garage with an up-and-over door, equipped with power and lighting.









This floor plan is for illustrative purposes only. It is not drawn to scale. Any measurements, floor areas (including any total floor area), openings and orientation are approximate. No details are guaranteed, they cannot be relied upon for any purpose and they do not form part of any agreement. No liability is taken for any error, omission or misstatement. A party must rely upon its own inspection(s). Powered by www.focalagent.com

To view this property please contact Connells on

T 01935 431 129
E yeovil@connells.co.uk

1-3 Princes Street
 YEOVIL BA20 1EW

EPC Rating: F Council Tax
 Band: C

Tenure: Freehold

view this property online connells.co.uk/Property/YOV314180



1. MONEY LAUNDERING REGULATIONS Intending purchasers will be asked to produce identification documentation at a later stage and we would ask for your co-operation in order that there will be no delay in agreeing the sale. 2. These particulars do not constitute part or all of an offer or contract. 3. The measurements indicated are supplied for guidance only and as such must be considered incorrect. Potential buyers are advised to recheck measurements before committing to any expense. 4. We have not tested any apparatus, equipment, fixtures, fittings or services and it is in the buyers interest to check the working condition of any appliances.

Connells Residential is registered in England and Wales under company number 1489613, Registered Office is Cumbria House, 16-20 Hockliffe Street, Leighton Buzzard, Bedfordshire, LU7 1GN. VAT Registration Number is 500 2481 05.

See all our properties at www.connells.co.uk | www.rightmove.co.uk | www.zoopla.co.uk

Property Ref: YOY314180 - 0003