

Newport Street, Brighton

£1,150 pcm Leasehold

First Floor 1 Bed Flat • Unfurnished • Popular Lewes Road Location

HW

ESTATE AGENTS

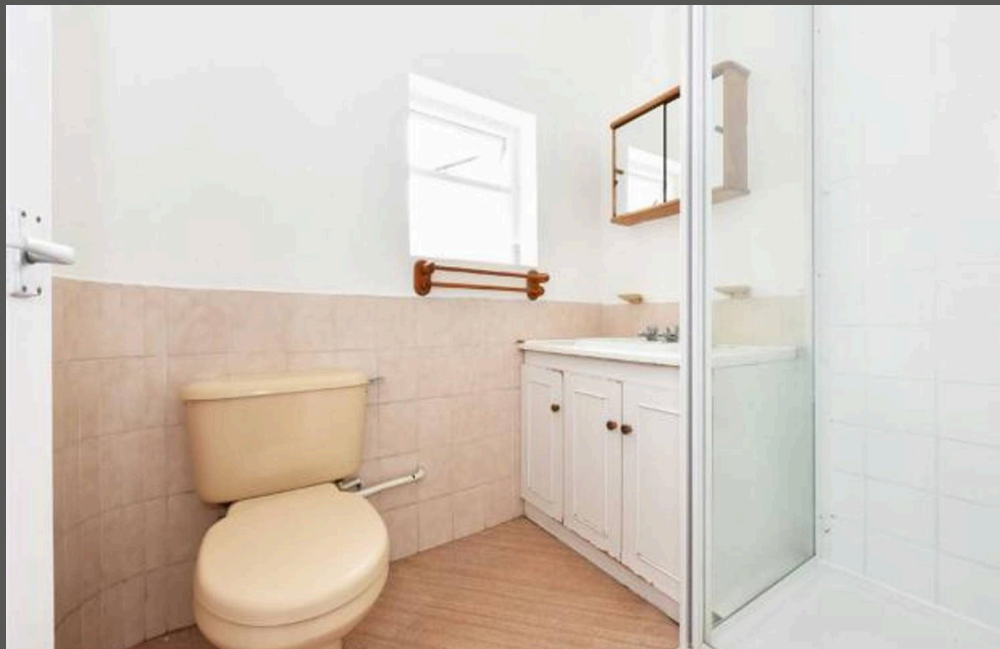
Bright one bedroom first floor flat near Lewes Road. Features spacious living, separate kitchen, modern bathroom, high ceilings, and great transport links. Ideal for professionals.

Council Tax band: A

Tenure: Leasehold

EPC Energy Efficiency Rating: D

EPC Environmental Impact Rating:



- First Floor 1 Bed Flat
- Unfurnished
- Popular Lewes Road Location

