

## Sherwood Street, London W1F

Price £1,150 per week - Furnished







## Description

A luxury apartment by The Crown Estate in London's most historic neighbourhood just off Regent's Street. Entering on the 3rd floor you have a spacious hallway, a double bedroom and the bathroom. The internal staircase takes you down to the 2nd floor where you have a spacious reception room with dining area and semi-open plan fully fitted kitchen and a guest WC. The apartment is offered furnished and has wooden flooring.

Council tax band: F. Rent is payable on a monthly basis, and you may be required to pay more than a month's rent in advance for tenancies with annual rents exceeding £100,000. You will be required to pay a 1 week holding deposit following a successful offer. Tenancies with annual rents up to £50,000 will require a 5 weeks' security deposit, while those exceeding this threshold will require a 6 weeks' deposit. Utility bills, council tax, telephone line and broadband are not included in the rent. As well as paying the rent, you may also be required to make some additional permitted payments. If your tenancy does not qualify as an APT, additional fees may apply. Please visit [jll.co.uk/fees](http://jll.co.uk/fees) for details of fees that may be payable when renting a property. To check broadband and mobile phone coverage please visit [ofcom.org.uk/phones-telecoms-and-internet/advice-for-consumers/advice/ofcom-checker](http://ofcom.org.uk/phones-telecoms-and-internet/advice-for-consumers/advice/ofcom-checker)

- 24 Hour concierge
- Lift Access
- Approx. 706 sq ft
- Wooden Flooring
- Furnished
- EPC:
- Council tax: Band F
- Deposit amount: £7,170

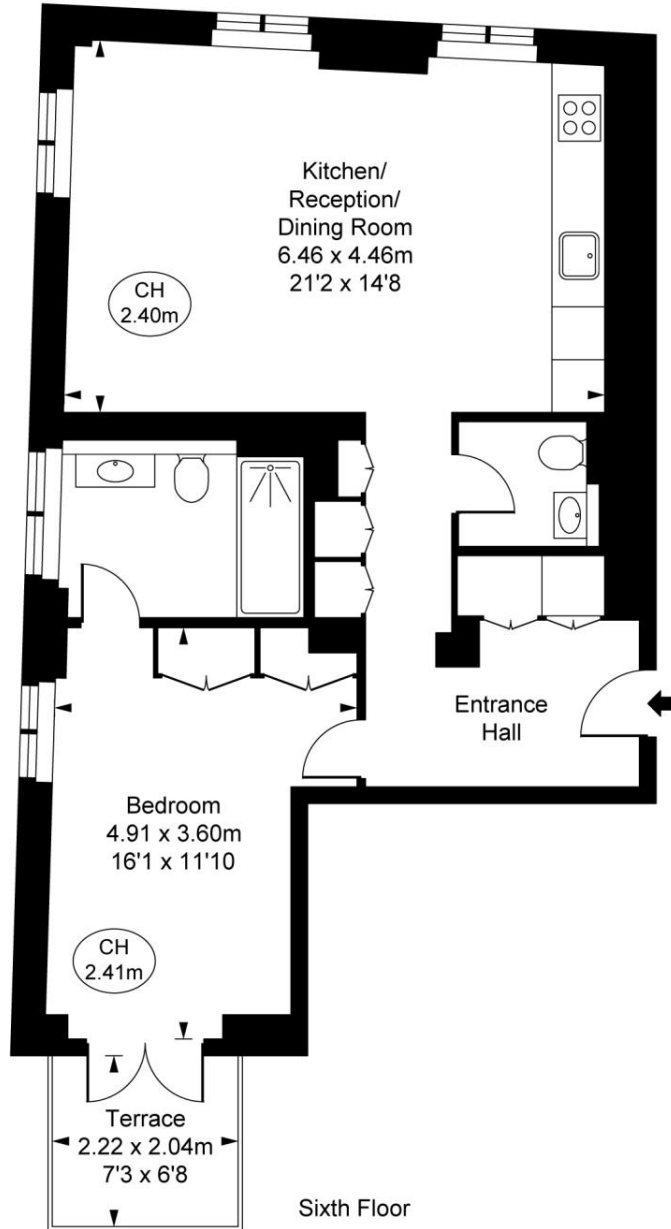
# Floorplan

706 sq ft | 66 sq m

Sherwood Street, W1D

Approximate Gross Internal Area  
65.63 sq m / 706 sq ft

( CH = Ceiling Heights )



Sixth Floor

This plan is not to scale. It is for guidance and not for valuation purposes.  
All measurements and areas are approximate only, and have been prepared in accordance with the current edition of the RICS Code of Measuring Practice.  
© Fulham Performance

Mayfair and Marylebone  
St George Street,  
London W1S 2FQ  
+44 207 399 5550  
mayfair@jll.com

*Urban living, your way.*

[jll.co.uk/residential](http://jll.co.uk/residential)

© 2019 Jones Lang LaSalle IP, Inc. All rights reserved. All information contained herein is from sources deemed reliable; however, no representation or warranty is made to the accuracy thereof.

