



19 Springcroft Close, Hipswell, North Yorkshire, DL9 4NZ
£325,000



19 Springcroft Close, Hipswell, North Yorkshire, DL9 4NZ

READY NOW & NO NEED TO BUY OFF PLAN - The BEST EXCLUSIVE New Homes Location in the Area. It's all about LOCATION, LOCATION, LOCATION - Call NOW to View: 01748 822 711

EXCLUSIVE OFFER Flooring allowance up to £3,000 & Solicitor Fees on purchase up to £800

Free Washing Machine & Outside tap (select plots).

This DETACHED 4 BEDROOM, En-Suite Semi-Detached New Home with FULLY ENCLOSED REAR GARDEN... IDEAL FAMILY HOME (VERY EFFICIENT 'B' Energy Rated) LIVING ROOM, superb equipped KITCHEN/DINING ROOM, UTILITY. Upstairs are 4 BEDROOMS, a large BATH/SHOWER ROOM & an EN SUITE. Good-sized Integral GARAGE, further parking & enclosed WEST Facing REAR GARDEN. Gas Central Heating & UPVC Double Glazing. ICW 10 Year Build Safe Structural Warranty.

CONVENIENCE, QUALITY, SCENERY & a NEW HOME LIFE-STYLE with LEISURE, SHOPPING, ENTERTAINMENT & SCHOOLING for all ages in the immediate area. Excellent access A1(M) & A66 at Scotch Corner, & mainline rail station at Darlington. The area is ideal for WALKING, CYCLING etc & the SPECTACULAR DALES SCENERY speaks for itself. Historic Richmond market town is under 3 miles away. All this on your doorstep: <https://www.northyorks.gov.uk/catterick-garrison-town-centre-designs> (please visit the link).

HALL

SITTING ROOM 4.20m x 4.18m max (13'9" x 13'8" max)

Featuring bow window and radiator, leading to:

KITCHEN & DINING ROOM 6.00m x 3.36m (19'8" x 11'0")

Stylish range of soft-close wall & floor units with integrated oven & gas hob with extractor over and fridge/freezer.

UTILITY 2.39m x 1.75m (7'10" x 5'8")

Sink, plumbing for washing machine & space for a tumble drier.

WASHROOM/WC 2.00m x 1.04m (6'6" x 3'4")

Good-sized INTEGRAL GARAGE 6.00m x 2.98m (19'8" x 9'9")

(See below).

FIRST FLOOR LANDING

Built-in cupboard.

BEDROOM 1. 3.53m x 3.17m plus robes (11'6" x 10'4" plus robes)

PLUS built-in wardrobe.

EN SUITE 2.10m x 1.43m plus shower cubicle (6'10" x 4'8" plus shower cubicle)

BEDROOM 2. 3.58m x 2.49m plus robes (11'8" x 8'2" plus robes)

PLUS built-in wardrobe.

BEDROOM 3. 4.34m max x 3.17m (14'2" max x 10'4")

BEDROOM 4/STUDY 2.51m x 1.99m (8'2" x 6'6")

ADDED EXTRA: Fitted double wardrobe

Large 'HOUSE' BATH/SHOWER ROOM 2.95m x 1.88m (9'8" x 6'2")

OUTSIDE

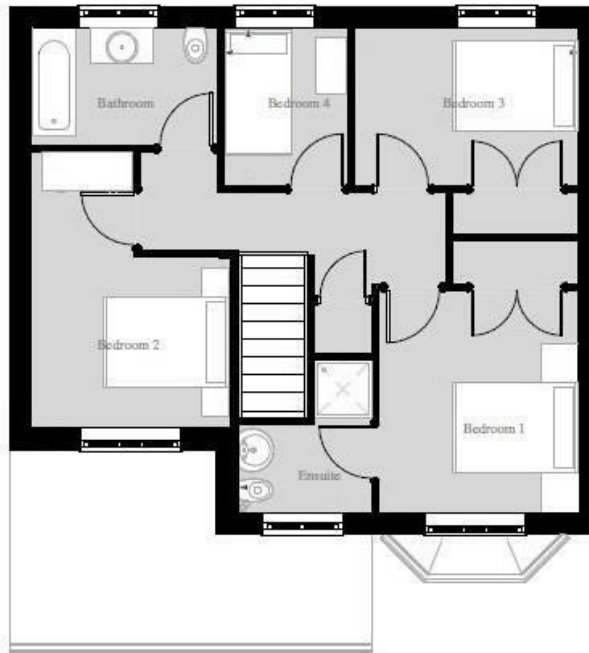
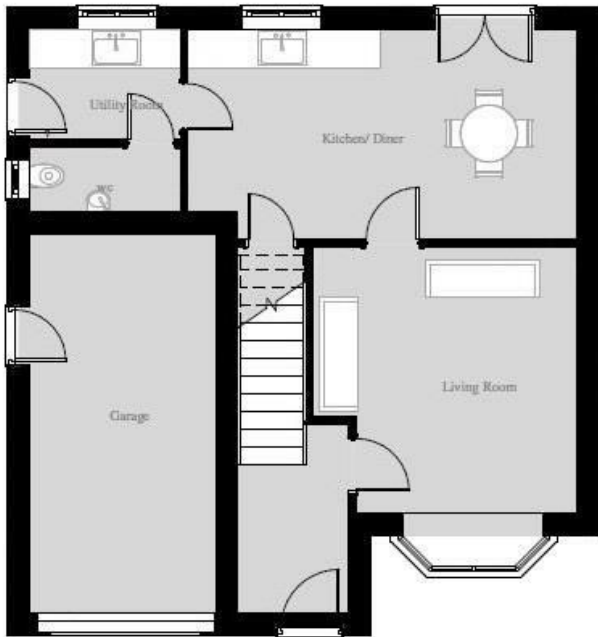
Good-sized INTEGRAL GARAGE (6.00m x 2.98m/19'8" x 9'9") with strip-light & power. Front Garden turfed open plan with block-set driveway. Rear Garden top soiled with textured concrete paved patio & perimeter paving. 1.83m/6ft close board fencing between houses, 1.22m/4ft close board fencing between rear gardens. Enclosed Rear Garden.

NB

1. GREEN FEES covering the communal green areas of circa £120 per year will apply.
2. Council Tax Band: To be confirmed by Richmondshire District Council
3. The details outlined are an indication of the proposed specification. The developer reserves the right to alter any part of the development specification at any time. Where brands are specified, the developer reserves the right to replace the brand with another equal quality or better.
4. IMAGES ETC: Computer Generated Images (CGi's), Photographs & Artists Impressions are for illustrative Purposes only. Floor plans are for illustration only.
5. ***SPECIAL DEAL***: Flooring allowance up to £3,000 & Solicitor Fees on purchase up to £800
Free Washing Machine & Outside tap (select plots).



£325,000



FIRST FLOOR

Energy Efficiency Rating

	Current	Potential
<i>Very energy efficient - lower running costs</i>		
(92 plus) A		
(81-91) B		
(69-80) C		
(55-68) D		
(39-54) E		
(21-38) F		
(1-20) G		
<i>Not energy efficient - higher running costs</i>		

England & Wales

EU Directive
2002/91/EC



Environmental Impact (CO₂) Rating

	Current	Potential
<i>Very environmentally friendly - lower CO₂ emissions</i>		
(92 plus) A		
(81-91) B		
(69-80) C		
(55-68) D		
(39-54) E		
(21-38) F		
(1-20) G		
<i>Not environmentally friendly - higher CO₂ emissions</i>		

England & Wales

EU Directive
2002/91/EC



