



Lakeside Drive, NW10

£497 Per week

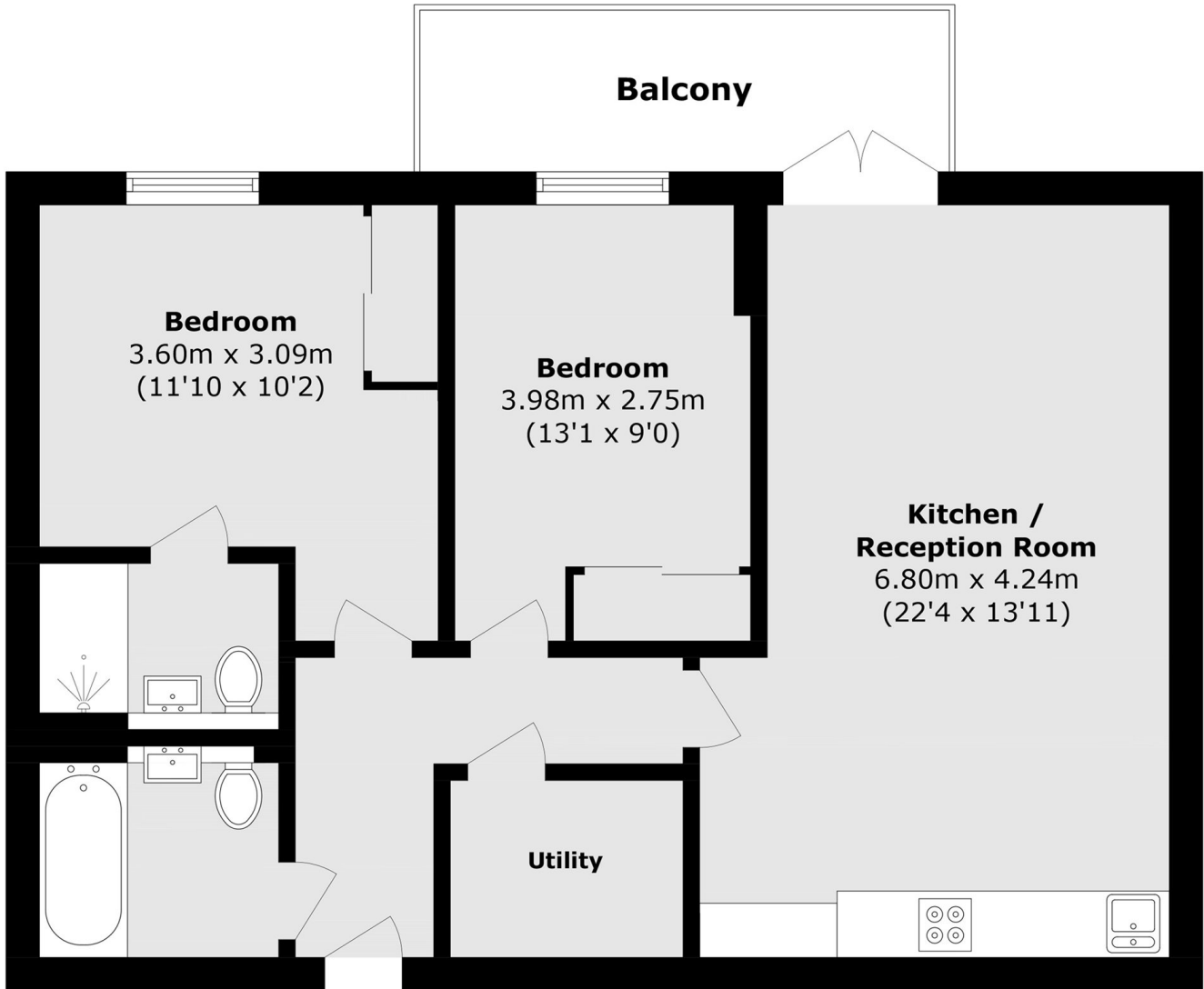
Beautifully presented two bedroom, two bathroom apartment set within a sought after development. The property consists of open plan living with modern kitchen, amazing views, communal gardens and gym.

Hanger Lane (Central line) and Park Royal tube stations are just over half a mile away. Lakeside Drive is served by the 226 bus route.

Features

- Modern Development
- Two Double Bedrooms
- Two Modern Bathrooms
- Communal Garden
- Access to the Gym
- Allocated Parking Space

Lakeside Drive,
London, NW10



Total area (approx.): 69.3 sq. m (745.9 sq. ft)
Balcony total (approx.): 7.3 sq. m (78.5 sq. ft)