

oakheart



£460,000

Offers In The Region Of
3 Oak Fields, Lawshall, Bury St Edmunds

Oakheart Land & New Homes are delighted to present Oakfields, an exclusive development of just five beautifully crafted two and three-bedroom detached properties. Each thoughtfully designed to offer modern living, impressive energy efficiency and generous south facing gardens.

Every home is finished to a high standard, complete with

en-suites to the principal bedrooms, open-plan living spaces and air source heat pump heating systems paired with EV charging points. The properties are now complete and ready for occupation.

Lawshall is a charming and well-connected Suffolk village, offering a peaceful rural lifestyle while remaining conveniently close to nearby market towns such as Bury St

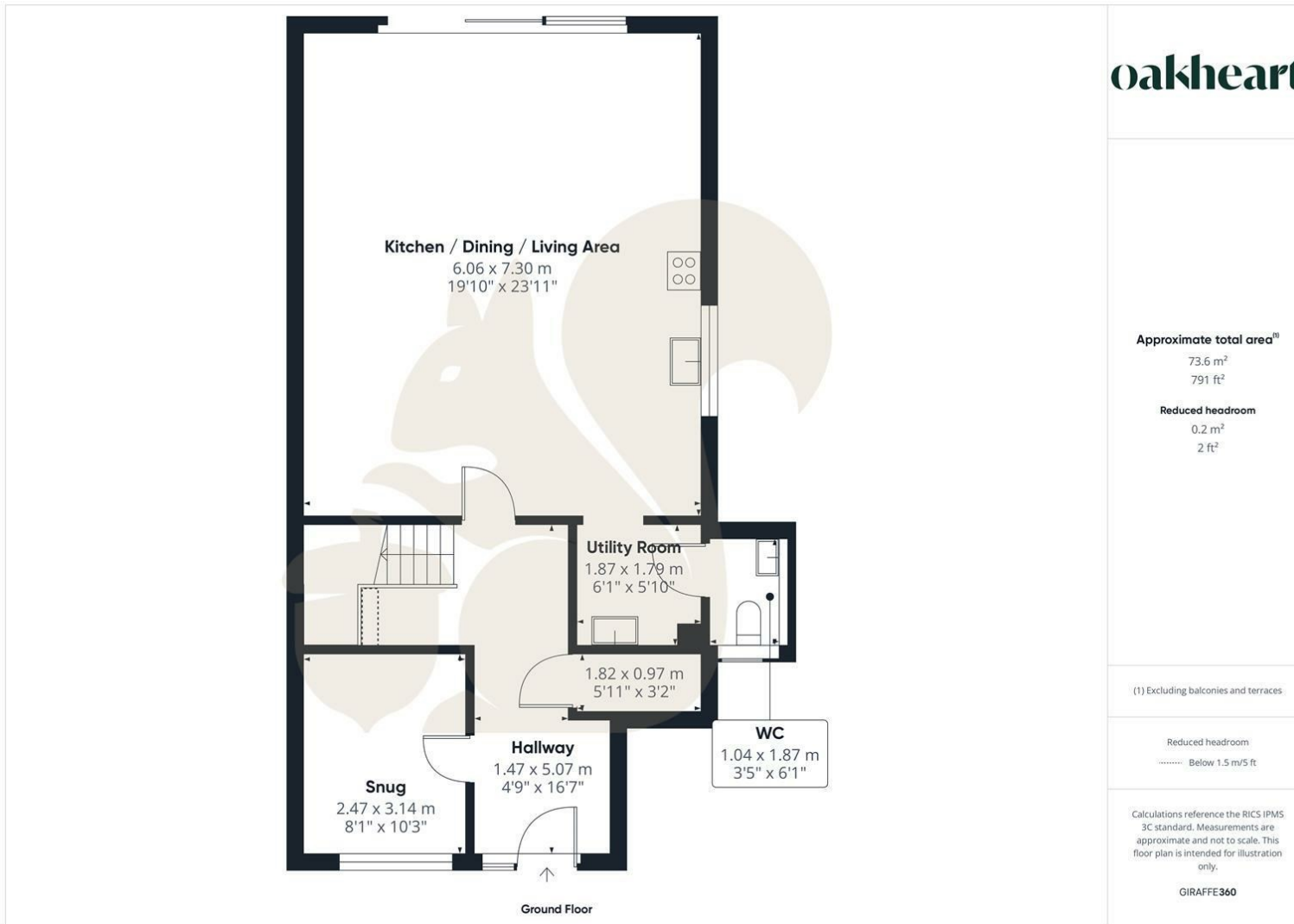
Edmunds and Sudbury. Surrounded by picturesque countryside, the village features a strong sense of community, with amenities including a well-regarded primary school, a popular local pub, village hall, playing fields and numerous trail routes. Its blend of rural tranquillity, natural beauty and easy access to everyday essentials makes Lawshall an increasingly sought-after location for families, commuters and those looking to enjoy the best of village living.







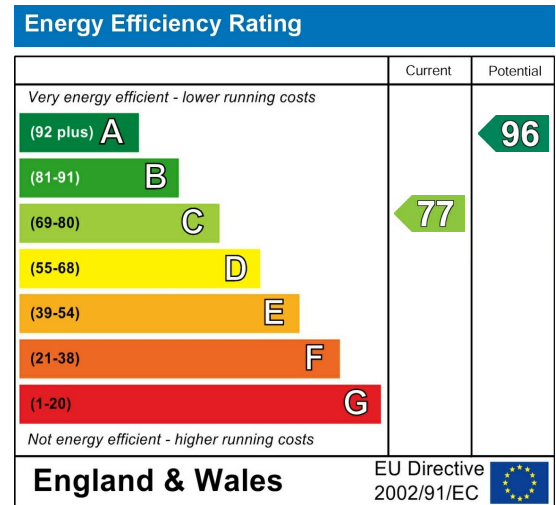




Local Authority:
Babergh District Council

Tenure:
Freehold

Council Tax Band:
D



Agents Note: Whilst every care has been taken to prepare these particulars, they are for guidance purposes only. All measurements are approximate and are for general guidance purposes only and whilst every care has been taken to ensure their accuracy, they should not be relied upon.

Oakheart Bury St Edmunds
01284 331077
bury@oakheart.co.uk
8 St Johns Street, Bury St Edmunds, Suffolk, IP33 1SQ

oakheart