



Linwood Close, SE5

£375,000

Tucked away within the peaceful and sought after setting of Linwood Close, SE5, this beautifully presented one bedroom flat boasts its own private entrance, an allocated parking space and comes with a share of the freehold. The property is ideal for first-time buyers or those seeking a turnkey home.

Linwood Close is positioned within easy reach of Camberwell, Peckham and East Dulwich, giving access to an excellent mix of cafés, independent shops, parks and local amenities. The flat is superbly connected. Peckham Rye station is just 0.3 miles away, while Denmark Hill station is approximately 0.6 miles away, providing further connectivity across London.

Features

- Share Of Freehold
- Allocated Parking Space
- Ready To Move In
- Private Entrance
- Quiet Development
- Excellent Location

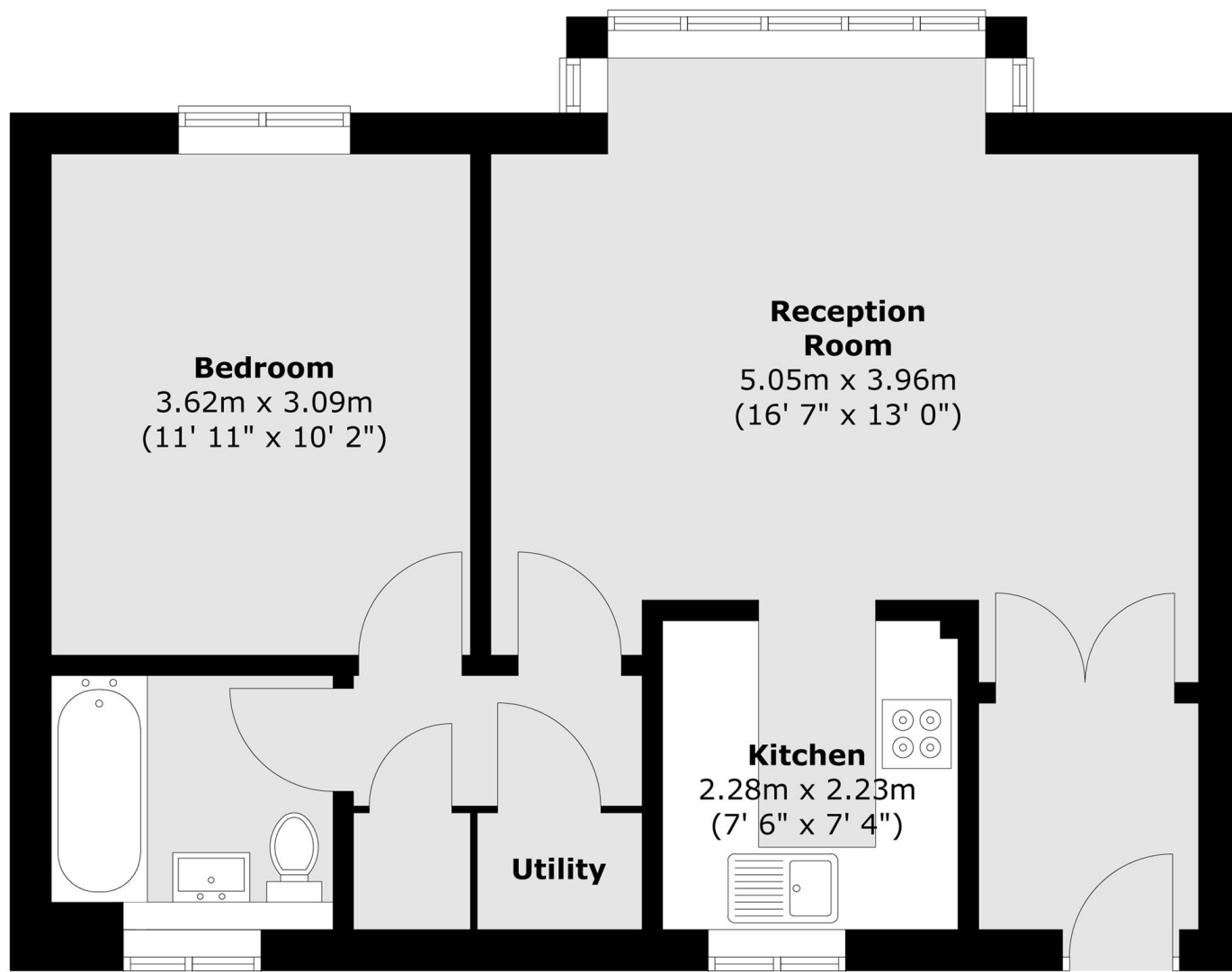


Linwood Close, SE5

The bright and generously sized reception room creates a welcoming living space, enhanced by natural light and a sense of openness. A modern semi open-plan kitchen is thoughtfully designed, offering both functionality and a contemporary style. The bedroom is well-proportioned, while the beautifully finished tiled bathroom adds a touch of luxury. The property also benefits from ample storage options throughout. Surrounded by greenery, Linwood Close Woods provides a leafy and serene backdrop, while residents can also enjoy access to well-maintained communal garden spaces perfect for relaxing or socialising.



Linwood Close, London, SE5



Total area (approx.) : 49.3 sq. m (531 sq. ft)