

OVER 60?

Secure this property
for up to **59% less!**



Price
£315,000
Freehold

3x  1x  1x 

Bannock Road, Whitwell, Isle of Wight,
PO38

Pittis 
Helping you move forwards



Main features

- **Detached bungalow in a quiet village location**
- **Good sized gardens surround the property**
- **Conservatory off the lounge overlooking the garden**
- **Solar panels providing your own electricity**
- **Garage with driveway providing plenty of off road parking**

Accommodation

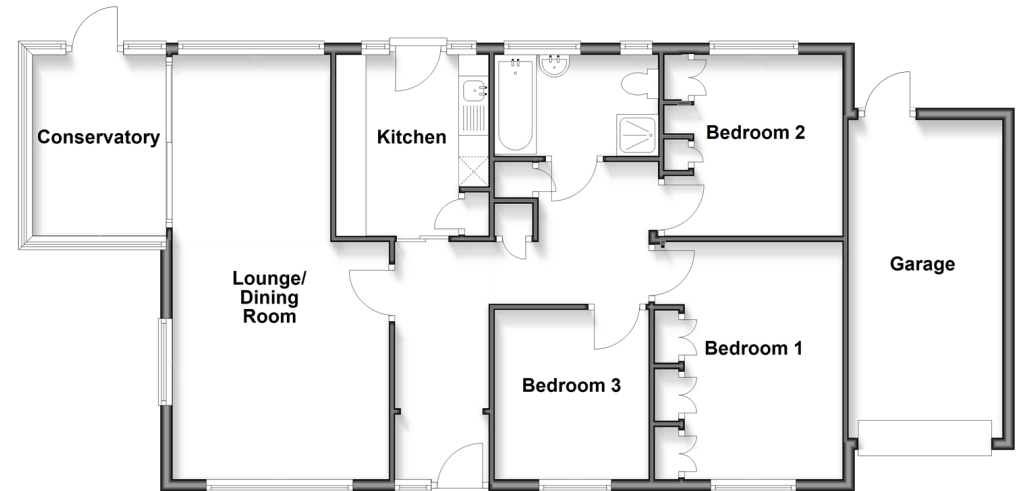
GROUND FLOOR

Hallway
 Lounge/Dining Room: 23'3 x 12'1 (7.09m x 3.69m)
 Conservatory: 9'3 x 7'8 (2.82m x 2.34m)
 Kitchen: 9'5 x 8'4 (2.87m x 2.54m)
 Bedroom 1: 12'10 x 10'4 (3.91m x 3.15m)
 Bedroom 2: 9'11 x 9'9 (3.02m x 2.97m)
 Bedroom 3: 9'0 x 8'4 (2.75m x 2.54m)
 Bathroom

OUTSIDE

Garage & Driveway
 Front & Rear Gardens

Ground Floor
 Approx. 102.2 sq. metres (1100.0 sq. feet)



Call Ventnor - 01983 856417 ■ pittis.co.uk

■ Through a Homewise Home For Life Plan people aged 60+ can secure this property for up to 59% less, by purchasing a Lifetime Lease



60802373/20260507/CP/CS