

Brookwood Road, Hounslow

Monthly Rental Of £2,000

3 Bedrooms | 1 Bathrooms | 1 Reception

IVY GATE™



Summary:

This generously proportioned split-level maisonette offers three well-sized bedrooms, a spacious reception and dining area ideal for entertaining, with direct access to a private rear garden, and a separate modern fitted kitchen. The first floor comprises three generous bedrooms and a contemporary family bathroom, while the ground floor further benefits from a convenient guest WC and excellent built-in storage throughout.

Three Bedroom Maisonette

Private Garden Area

Modern Kitchen

Close Proximity To Train Stations

Unfurnished

Available from End of May

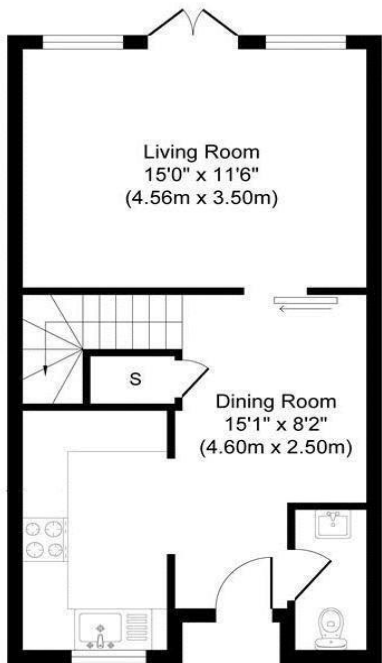
Brookwood Road, Hounslow

Monthly Rental Of £2,000

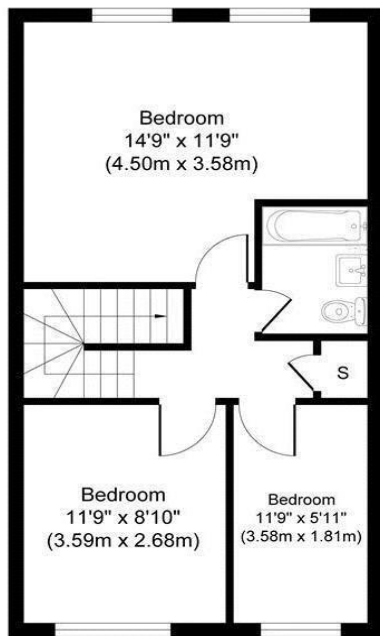
3 Bedrooms | 1 Bathrooms | 1 Reception



Brookwood Road, TW3 4HB



Ground Floor
Approximate Floor Area
421.24 sq. ft
(39.13 sq.m)



First Floor
Approximate Floor Area
432.31 sq. ft
(40.16 sq.m)

Approximate Gross Internal Floor Area 853.57 sq. ft / 79.30 sq. m

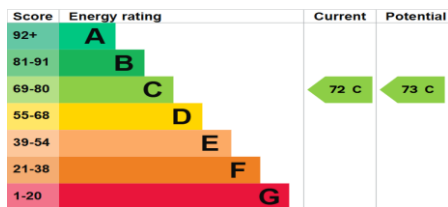
Illustration for identification purposes only, measurements are approximate, not to scale.

Tenure:

Council Tax: C

Local Authority: London Borough of Hounslow

EPC Rating: C



MONEY LAUNDERING REGULATIONS 2003

Intending purchasers will be asked to produce identification and proof of financial status when an offer is received. We would ask for your co-operation in order that there will be no delay in the offer process.

THE PROPERTY MISDESCRIPTIONS ACT 1991

The agent has not tested any apparatus, equipment, fixtures and fittings or services and so cannot verify that they are in working order or fit for the purpose. A Buyer is advised to obtain verification from their Solicitor or Surveyor. References to the Tenure of a Property are based on information supplied by the Seller. The Agent has not had sight of the title documents. The mention of any appliances and services within these details does not imply that they are in full and efficient working order. These particulars are intended as a guide and act as information to prospective buyers. They are not an offer or contract, or part of one. All details, areas, measurements floorplans and distances referred to are given as a guide only and should not be relied upon, they are approximate and illustrative only and **not to scale**. Lease details, service charges and ground rent (where applicable) are given as a guide only and the agent has not had sight of the original documentation, they should be checked by your solicitor prior to exchange of contracts.