



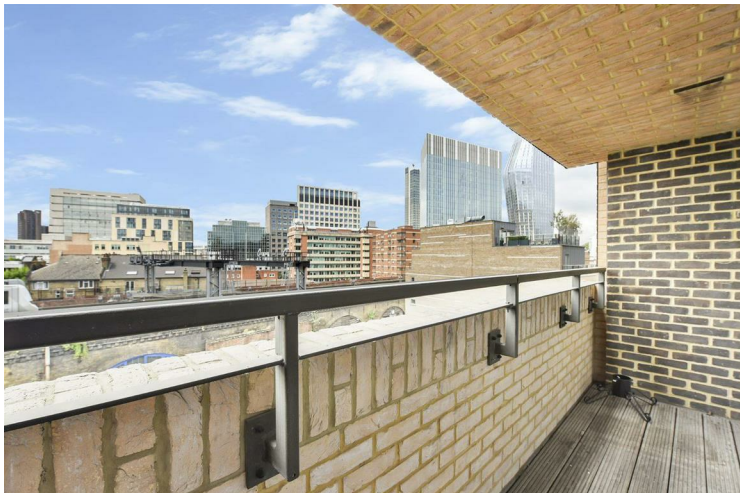
**5B Bear Lane  
SE1**

**£3,850 PCM**

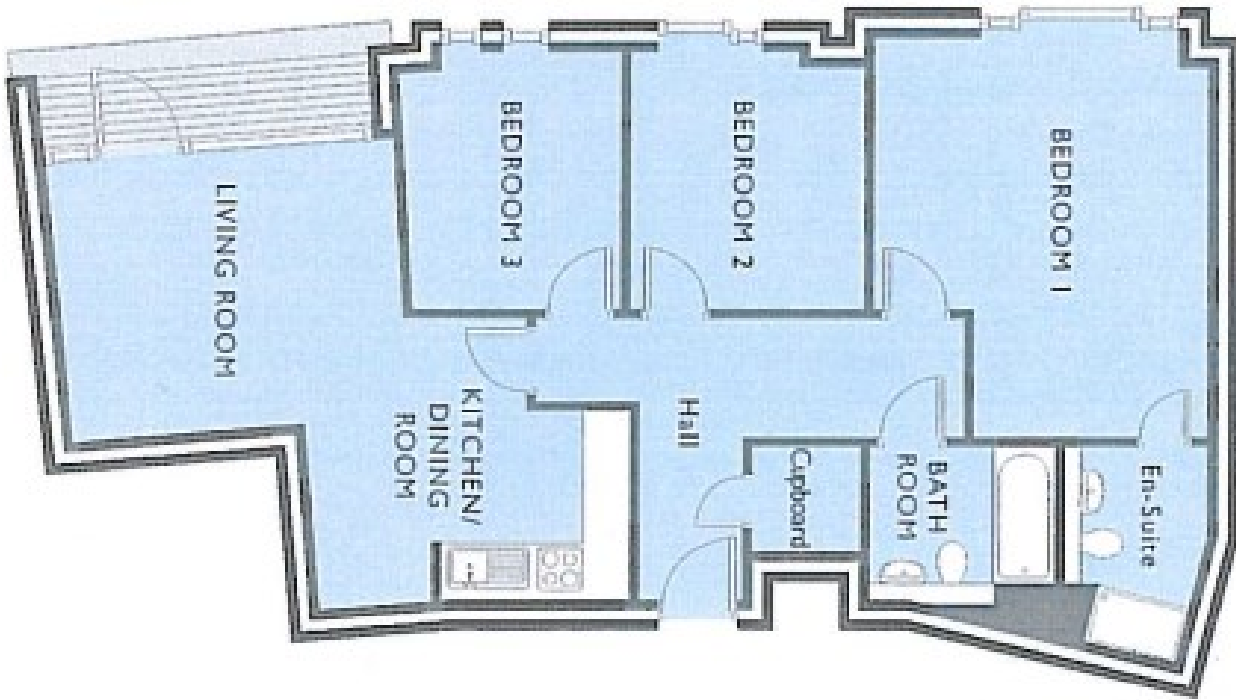
Leonard Leese are pleased to present this fantastic three double bedrooms apartment to rent in a superb development in the heart of Southwark. The property boasts a good size reception room open plan kitchen, three double bedrooms, two bathroom with one en suite and a private balcony. Bear Lane is ideally located moments from Southwark and Waterloo tube stations. The property is offered furnished and available to view immediately.




- Three Double Bedrooms • Two Bathrooms (One En Suite) • Private Balcony • Superb Location • Views of London • Available 6th June • Wood Flooring Throughout







Energy Efficiency Rating		
	Current	Potential
<i>Very energy efficient - lower running costs</i>		
(92 plus) <b>A</b>		
(81-91) <b>B</b>		
(69-80) <b>C</b>		
(55-68) <b>D</b>		
(39-54) <b>E</b>		
(21-38) <b>F</b>		
(1-20) <b>G</b>		
<i>Not energy efficient - higher running costs</i>		
<b>England &amp; Wales</b>	EU Directive 2002/91/EC 	

Agents Note: Whilst every care has been taken to prepare these particulars, they are for guidance purposes only. All measurements are approximate and are for general guidance purposes only and whilst every care has been taken to ensure their accuracy, they should not be relied upon and potential buyers/tenants are advised to recheck the measurements

Borough Lettings  
230 Borough High Street  
London  
SE1 1JX

020 7015 1360  
enquiries@leonardleese.com  
www.leonardleese.com

