

3 Este Road  
London  
SW11 2TL



**MBL ESTATES**  
ESTABLISHED 1995

3 Este Road  
£900,000



Contact

020 8540 7070

info@mblestates.co.uk

Local Authority

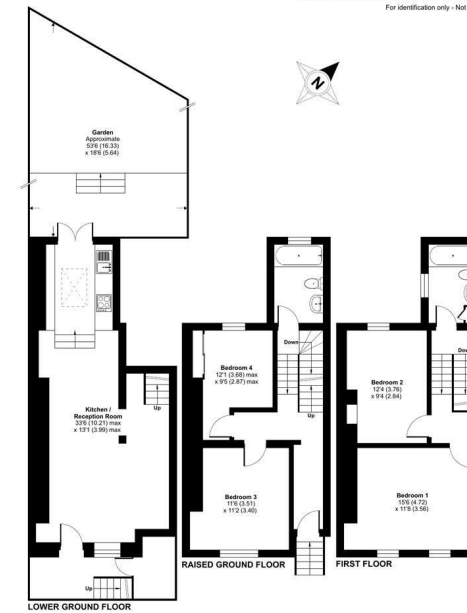
Council Tax Band F

EPC Rating D

Este Road, London, SW11

Approximate Area = 1162 sq ft / 107.9 sq m

For identification only - Not to scale



© Floor plan provided in accordance with RICS Property Measurement 2nd Edition, Incorporating International Property Measurement Standards (IPMS Residential), 6th Edition 2025. Produced for Big MBL Estate & Partners Limited. REF: 1221600