



Salisbury Road, NW6

£750 Per week

Two double bedroom, two bathroom flat located within a purpose built apartment block with 24 hour porter. Open plan kitchen reception room with wooden floors. Master bedroom with ensuite bathroom and access out onto a large balcony. Parking available.

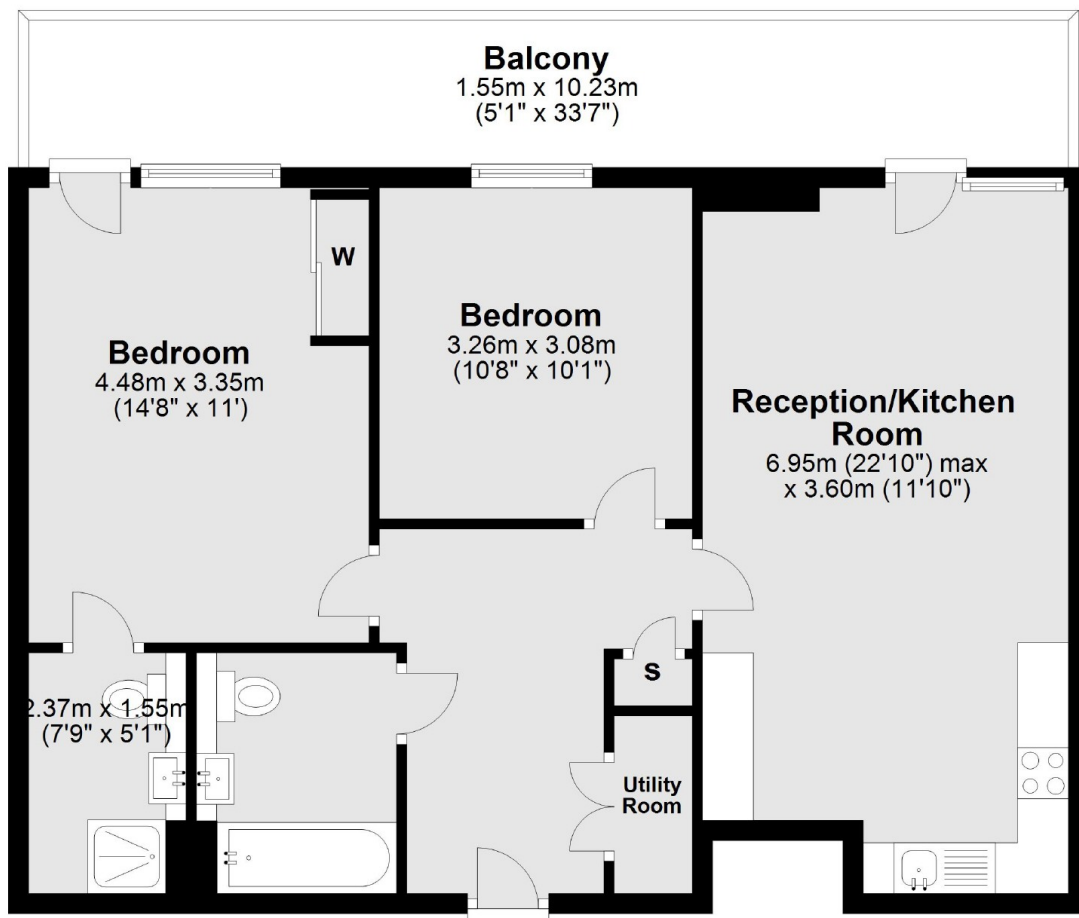
Alderside Apartments are located next to Queen's Park Tube station giving you quick access to the City and Central London on the Bakerloo Line.

Features

- Two Double Bedrooms
- Two Bathrooms
- Roof Terrace
- One Parking Space
- 24 Hour Porter
- Queen's Park Tube

Salisbury Road,
London, NW6

Second Floor



Total area: approx. 69.9 sq. metres (752.3 sq. feet)