



Shrewsbury Mews, W2

£3,250 Per week

A recently refurbished two double bedroom mews house, benefitting from your own front door and in this gated cobbled mews located in the heart of Notting Hill,

This house is ideally located close to the restaurants and shops at Westbourne Grove, including Granger & Co, 202 and Bodyism.

Features

- Two Double Bedrooms
- Two Bathrooms
- Newly Refurbished
- Secure Gated Mews
- Double Glazing
- Open Plan Layout

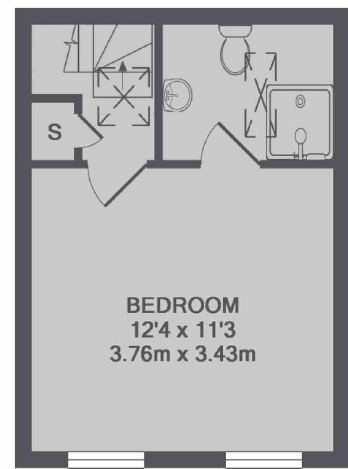
Shrewsbury Mews, London, W2



GROUND FLOOR



1ST FLOOR



2ND FLOOR

TOTAL APPROX. FLOOR AREA 720 SQ.FT. (66.8 SQ.M.)