



**Guide Price**  
**£270,000**

**Freehold**

3x  2x  2x 

**Coronation Villas,  
Chapel Hill, Eythorne,  
Dover, Kent, CT15**

**OVER 60?**

Secure this property  
for up to **59% less!**

*Wards*  
Helping you move forwards





## Main features

- Ideal property for a growing family
- Good size enclosed rear garden, ideal for children or pets
- Well maintained throughout, can move in without having to lift a finger
- Sought after village of Eythorne
- Excellent transport links with easy access to the A256 and A2

## Accommodation

### GROUND FLOOR

Lounge : 13'9 x 13'2 (4.19m x 4.02m)  
 Dining/Family Area : 21'7 at widest point (6.58m) x 13'3 (4.04m) narrowing to 10'9 (3.28m)  
 Kitchen: 9'7 x 7'9 (2.92m x 2.36m)  
 Utility Area: 5'6 x 4'5 (1.68m x 1.35m)  
 Shower Room  
 Bedroom 3: 11'0 x 7'2 (3.36m x 2.19m)

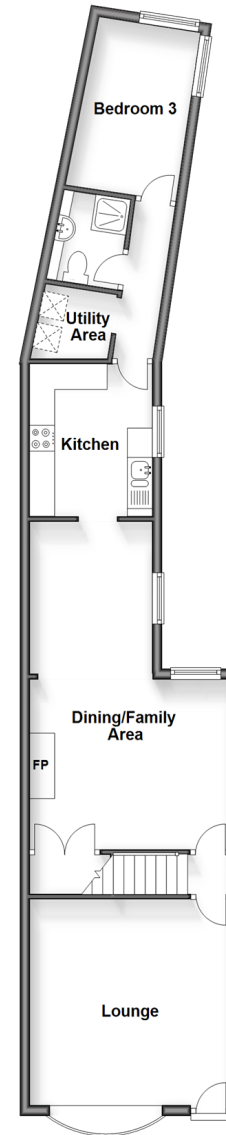
### FIRST FLOOR

Landing  
 Bathroom  
 Bedroom 1 : 13'4 x 11'1 (4.07m x 3.38m)  
 Bedroom 2: 13'6 x 11'3 (4.12m x 3.43m)

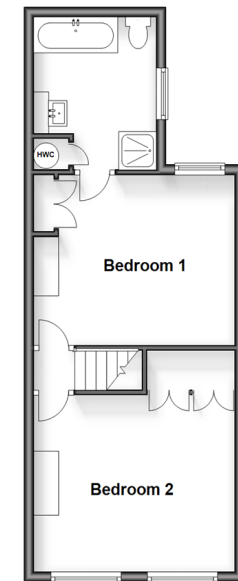
### OUTSIDE

Front Garden  
 Rear Garden

**Ground Floor**  
 Approx. 63.8 sq. metres (686.4 sq. feet)



**First Floor**  
 Approx. 38.6 sq. metres (415.5 sq. feet)



**Call Dover - 01304 214876 ■ [wardsofKent.co.uk](http://wardsofKent.co.uk)**

- Legal advice should be taken to verify fixtures/fittings, planning, alterations and/or lease details
- Appliances & services are untested, dimensions are approximate and floor plans are not to scale
- Through a Homewise Home For Life Plan people aged 60+ can secure this property for up to 59% less, by purchasing a Lifetime Lease.



10729219/20250702/CDH/CB