



# HARDINGS

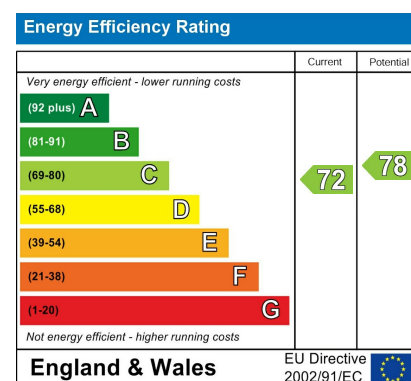


16 Clarence Road  
£1,400 PCM





A one bedroom apartment in central Windsor. Offering excellent access to Windsor's two train stations and shopping amenities this property comprises entrance hall, living room, kitchen, bathroom and double bedroom. Unfurnished. Council Tax Band C. EPC:C. On-street permit parking.

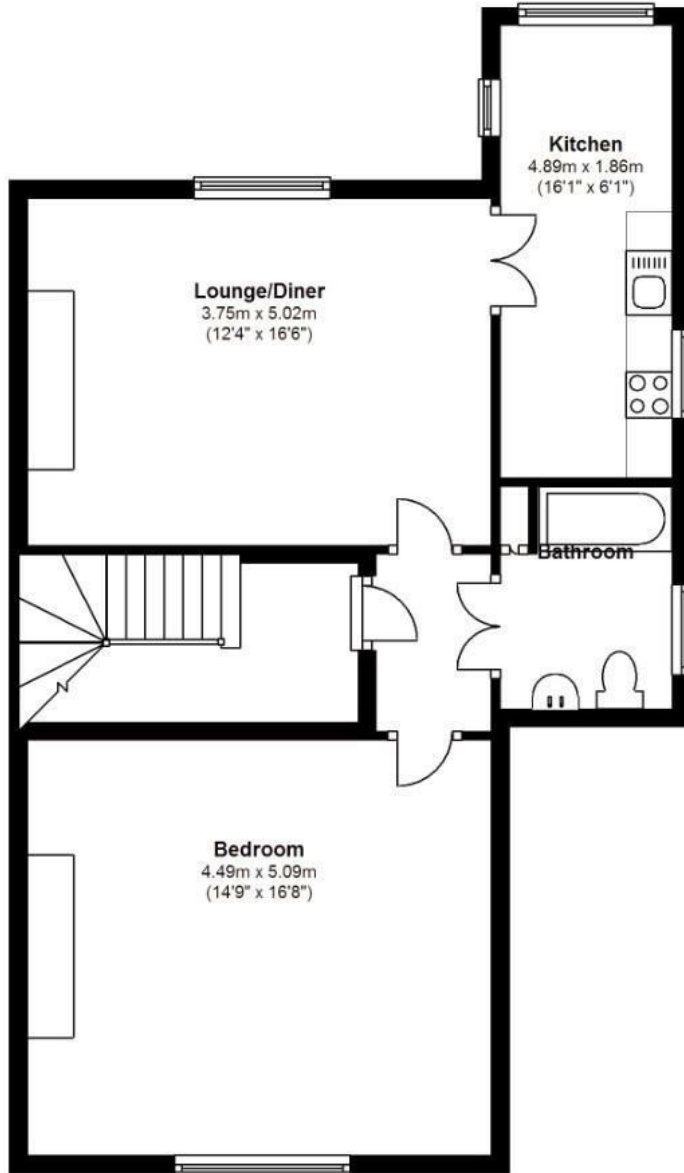


## Features

- One bedroom apartment
- First floor
- Unfurnished
- Central location
- Spacious throughout
- Permit parking

### Ground Floor

Approx. 64.7 sq. metres (696.4 sq. feet)



Total area: approx. 64.7 sq. metres (696.4 sq. feet)

Please note that these plans are strictly for identification purposes only and not to scale.  
Plan produced using The Mobile Agent.



11 High Street, Windsor, Berkshire, SL4 1LD,  
T: 01753 833 118 | E: [info@hardings.co.uk](mailto:info@hardings.co.uk)  
[www.hardings.co.uk](http://www.hardings.co.uk)

