



TK International  
020 7794 8700  
www.t-k.co.uk

Residential Sales  
Residential Lettings  
Property Management

Sales Office:  
9 Heath Street  
Hampstead  
London NW3 6TP  
E: sales@t-k.co.uk

Lettings Office:  
16-18 Heath Street  
Hampstead  
London NW3 6TE  
E: lettings@t-k.co.uk

tk.international  
TK International  
TK International

Est.  
1998



## Nutley Terrace Hampstead NW3

A stunning, bright and exceptionally spacious two double bedroom, two bathroom lateral apartment on the second floor of this highly regarded recent development on the corner of Nutley Terrace and Netherhall Gardens, with one secure underground parking space, and entitlement for further on street permit parking, plus use of a passenger lift and a concierge.

This impressive apartment has been recently refurbished, presents immaculately, and comprises generously proportioned accommodation, including a wonderful 29'6" x 21'1" living/entertaining space and a semi open-plan kitchen and dining area. There is also a separate utility room and the apartment enjoys excellent storage.

Further benefits include underfloor heating and air conditioning throughout, a sound system in the reception room and master bedroom, and a multimedia touch screen AV control system.

Otto Schiff House is idyllically located within a sought after residential area of Hampstead, perfect for the amenities and transport links in Hampstead (Northern Line), Finchley Road & Swiss Cottage (Metropolitan & Jubilee Lines) and is also within the catchment of many of the popular local schools.

**£6,950 Per Month**

**SOLE AGENT**





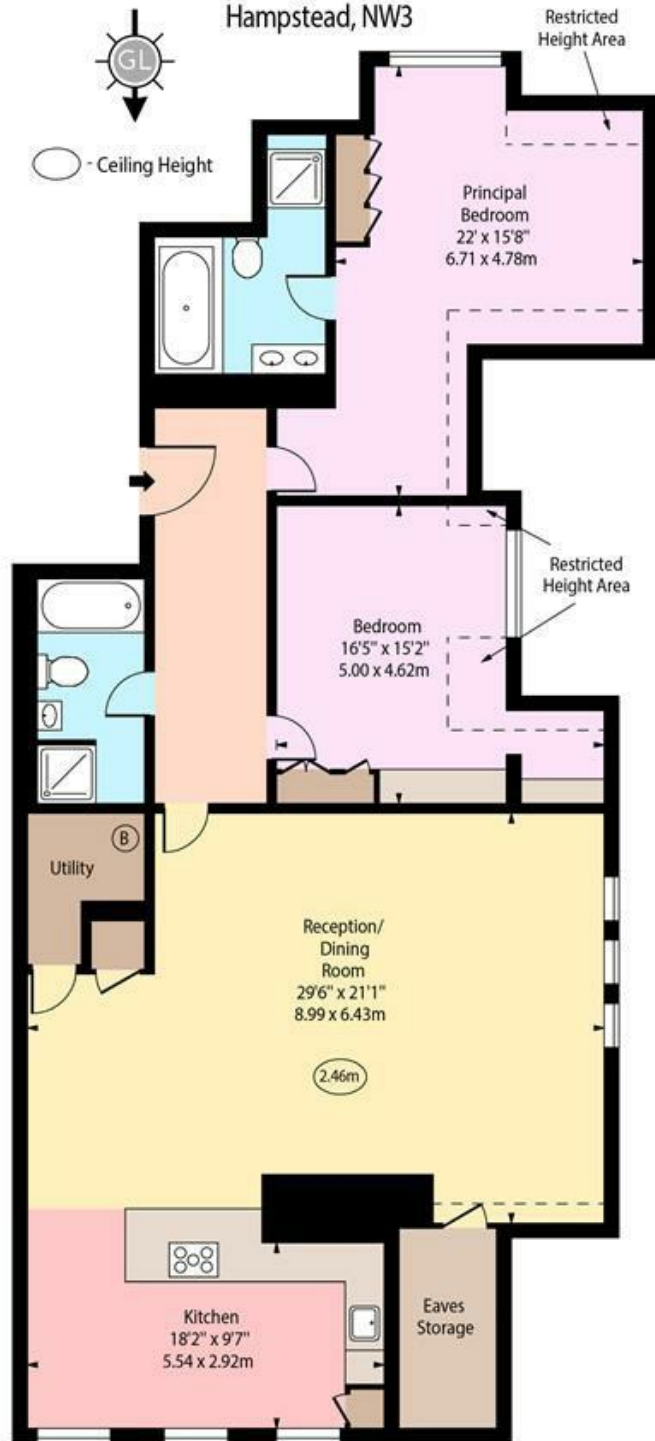








Otto Schiff House,  
Nutley Terrace,  
Hampstead, NW3



Second Floor

Approx Gross Internal Area 1526 Sq Ft - 141.77 Sq M

Approx. Floor Area Including Restricted Heights 1658 Sq Ft - 154.03 Sq M  
(Including Eaves Storage)

For Illustration Purposes Only - Not To Scale  
www.goldlens.co.uk  
Prepared for TK International  
Ref. No. 024050E