



1 Ashley Road East, London, N17 9NL

£2,500 Per Month

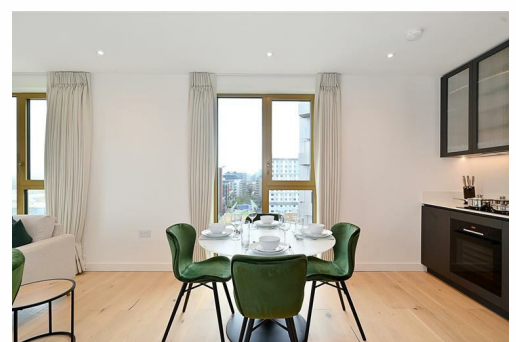
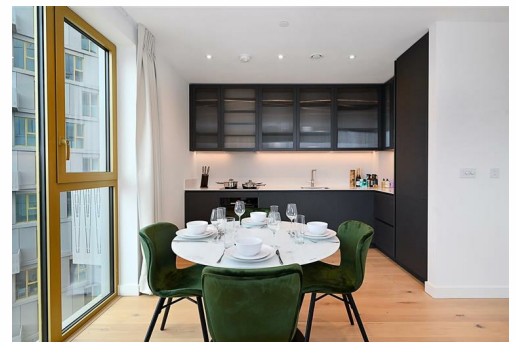


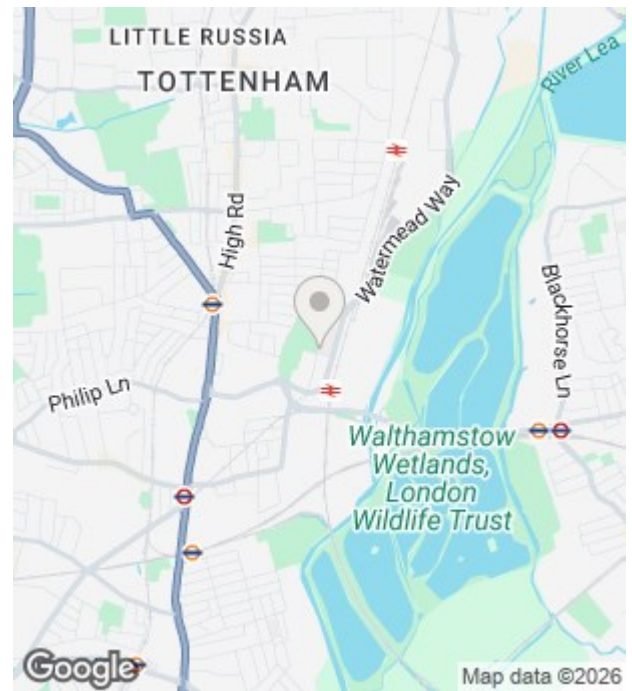
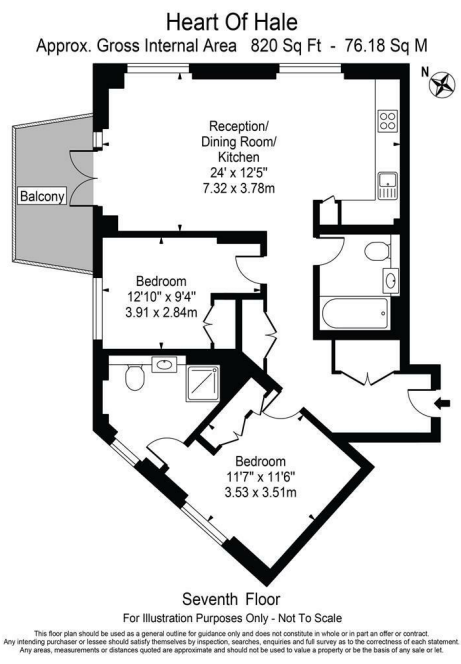
Luxury 7th floor two bedroom, two bathroom apartment measures approximately 820 Sq ft - is thoughtfully designed, beautifully finished and located in Tottenham Hale's most prestigious development. Interiors are by Conran and amenities include 24 hour concierge, residents lounge and landscaped communal gardens.

Located less than a minutes walk from Tottenham Hale Station offering links via Victoria Line (4 stops to Kings Cross and 6 stops to Oxford Street) and National Rail with a direct link to Stansted Airport in 40 minutes.

Council Tax Band D

- 24 Hour Concierge
- Resident Lounge
- Large Balcony
- Luxury Finish
- Moments from Retail Park
- Resident Terraces
- Underfloor Heating
- Co-Working Lounge
- Close to Tottenham Hale Station





Energy Efficiency Rating		Current	Potential
Very energy efficient - lower running costs			
(92 plus) <b>A</b>			
(81-91) <b>B</b>		<b>85</b>	<b>85</b>
(69-80) <b>C</b>			
(55-68) <b>D</b>			
(39-54) <b>E</b>			
(21-38) <b>F</b>			
(1-20) <b>G</b>			
Not energy efficient - higher running costs			
<b>England &amp; Wales</b>		EU Directive 2002/91/EC	

Environmental Impact (CO <sub>2</sub> ) Rating		Current	Potential
Very environmentally friendly - lower CO <sub>2</sub> emissions			
(92 plus) <b>A</b>			
(81-91) <b>B</b>			
(69-80) <b>C</b>			
(55-68) <b>D</b>			
(39-54) <b>E</b>			
(21-38) <b>F</b>			
(1-20) <b>G</b>			
Not environmentally friendly - higher CO <sub>2</sub> emissions			
<b>England &amp; Wales</b>		EU Directive 2002/91/EC	

Unit 10 Paddington Works 8 Hermitage Street, London, W2 1BE  
Tel: +44(0)20 3019 6151 Email: lettings@grange.london