



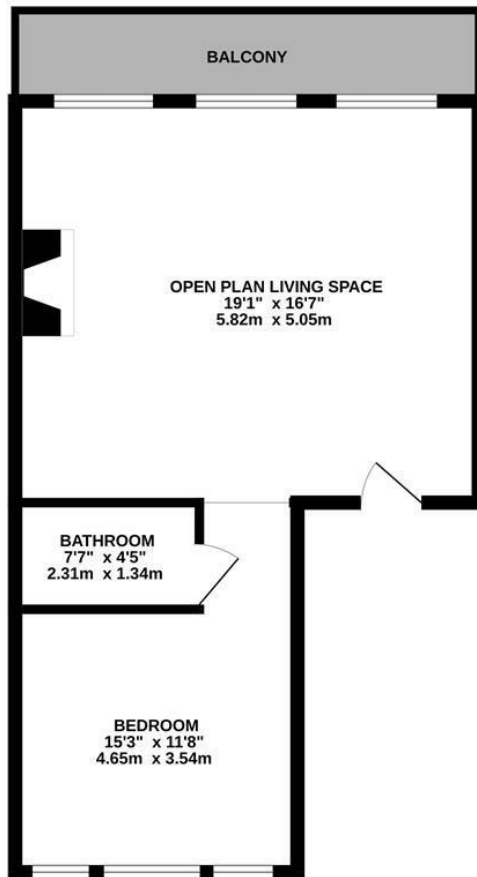
Markwick Terrace, St. Leonards-On-Sea TN38 ORE

Offers in excess of £275,000



A stylish ONE BEDROOM APARTMENT set in one of St. Leonards MOST SOUGHT AFTER ADDRESSES forming part of this iconic terrace designed by Decimus Burton. It's located adjacent to PRIVATE RESIDENTS GARDENS and just a short distance from the beach and the hub of St. Leonards On Sea where there is a mainline railway station with connections to London. Presented to an excellent standard throughout, the accommodation here is set on the SECOND FLOOR and is arranged as a GENEROUS OPEN PLAN LIVING SPACE positioned at the front of the property which enjoys ORIGINAL SASH WINDOWS which open up onto the PRIVATE BALCONY. The CONTEMPORARY KITCHEN has fitted units which provide ample storage and worktop space. The DOUBLE BEDROOM can be found at the rear of the property together with the FITTED SHOWER ROOM. Set in a HIGHLY SOUGHT AFTER LOCATION and being sold with NO ONWARD CHAIN, this fantastic property would make the perfect FIRST TIME HOME or seaside retreat.

GROUND FLOOR
484 sq.ft. (45.0 sq.m.) approx.



TOTAL FLOOR AREA: 484 sq.ft. (45.0 sq.m.) approx.

Whilst every attempt has been made to ensure the accuracy of the floorplan contained here, measurements of doors, windows, rooms and any other items are approximate and no responsibility is taken for any error, omission or mis-statement. This plan is for illustrative purposes only and should be used as such by any prospective purchaser. The services, systems and appliances shown have not been tested and no guarantee as to their operability or efficiency can be given.
Made with Metropix ©2025

