



Symonds
& Sampson

4 Britannia Way
Dorchester, Dorset

4 Britannia Way

Dorchester, Dorset
DT1 2QR

A detached house situated in a sought-after location in Dorchester, offering three double bedrooms, two garages, off-road parking, and well-maintained gardens.



- Detached family home in Castle Park
 - Driveway and two garages
 - Open-plan sitting and dining room
 - Conservatory overlooking rear garden
- Modern kitchen with integrated appliances
 - Three bedrooms
 - Large garden with patio area

Guide Price **£425,000**

Freehold

Dorchester Sales
01305 261008
dorchester@symondsandsampson.co.uk



THE PROPERTY

Situated within the popular Castle Park area of Dorchester, this detached family home enjoys a desirable residential setting less than half a mile from the town centre.

A welcoming front porch provides practical space for coats and shoes before leading into the entrance hall, which benefits from a convenient ground-floor WC. The sitting room features a central fireplace with an electric fire, creating a cosy focal point. Open-plan to the dining room, this bright and airy living space enjoys a large front-facing window and sliding doors opening into the conservatory.

The heated conservatory provides an delightful additional reception area, overlooking the garden and offering direct access to the patio via French doors.

The kitchen is fitted with a range of modern, contemporary units, providing ample storage and generous worktop space. Integrated appliances include a double oven, electric hob and fridge, while there is further space for a washing machine and dishwasher. Adjoining the kitchen is a useful utility room/rear porch, which offers access to the garden and garage, together with a sink and two large storage cupboards.

On the first floor are three well-proportioned bedrooms, comprising two generous double bedrooms and a spacious single bedroom, two of which benefit from built-in wardrobes. The contemporary shower room is fully tiled and includes useful built-in storage.

OUTSIDE

The property occupies a generous plot and is set back from the road behind an area of lawn, complemented by ornamental trees and well-stocked flower borders.

A block-paved driveway provides ample off-road parking for several vehicles and leads to the two single garages. Both garages benefit from power and lighting, with one providing access to the house and the other to the rear garden.

The rear garden is a particular feature of the property, offering a pleasant patio area adjoining the rear of the house, ideal for outdoor dining and entertaining. The remainder of the garden is predominantly laid to lawn, enclosed by timber fencing and bordered by well-maintained flower beds. A side gate provides convenient access to the front of the property.

SITUATION

Castle Park is approximately half a mile from Dorchester town centre, the property enjoys a convenient and desirable setting.

Dorchester offers an excellent range of shops, restaurants, leisure facilities and everyday amenities, while the vibrant Brewery Square development provides a superb selection of eateries, independent and national retailers, and a cinema. The property is also well placed for access to Dorset County Hospital and falls within the catchment area of a number of highly regarded schools.

Dorchester South and Dorchester West railway stations provide

mainline services to London Waterloo and Bristol Temple Meads respectively, offering excellent transport links. A Tesco superstore and retail park are within walking distance, while nearby countryside walks lead towards Maiden Castle and the surrounding Dorset countryside, providing easy access to some of the area's most scenic landscapes.

DIRECTIONS

what3words///calculate.live.inches

SERVICES

All mains services are connected.
Gas central heating.

Broadband - Ultrafast speed available

Mobile - There is mobile coverage in the area, please refer to Ofcom's website for more details. (<https://www.ofcom.org.uk>)

Council Tax Band: D (Dorset Council - 01305 251010)

MATERIAL INFORMAITON

Photos were taken in June 2026.



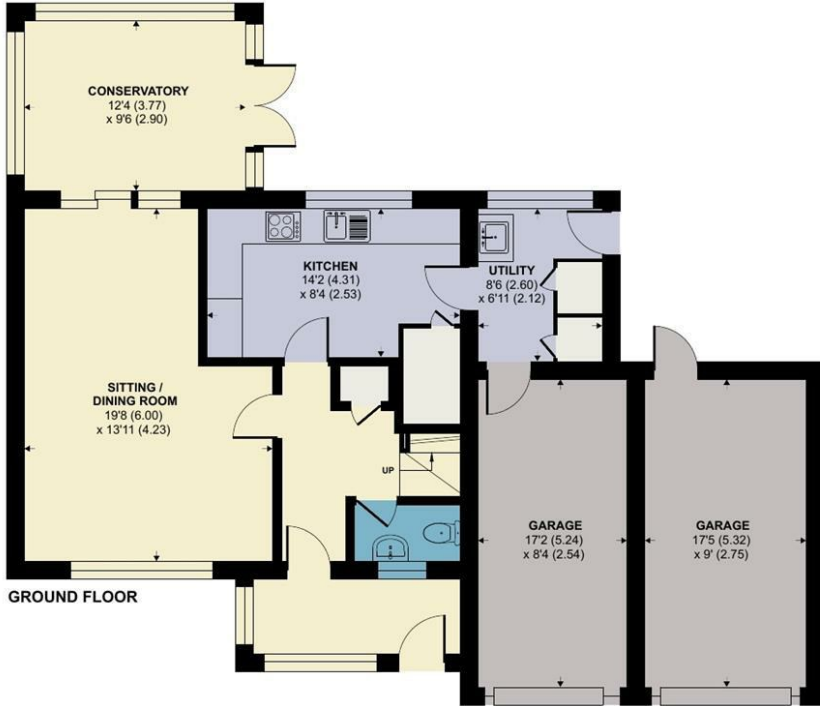
Britannia Way, Dorchester

Approximate Area = 1245 sq ft / 115.6 sq m

Garage = 298 sq ft / 27.6 sq m

Total = 1543 sq ft / 143.2 sq m

For identification only - Not to scale



GROUND FLOOR



FIRST FLOOR

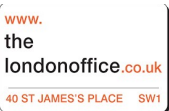


Energy Efficiency Rating		Current	Potential
Vary energy efficient - lower running costs			
(92 plus) A			
(81-91) B			
(69-80) C			
(55-68) D		61	68
(39-54) E			
(21-38) F			
(1-20) G			
Not energy efficient - higher running costs			
England & Wales		EU Directive 2002/91/EC	

Floor plan produced in accordance with RICS Property Measurement 2nd Edition, Incorporating International Property Measurement Standards (IPMS2 Residential). © nichecom 2026. Produced for Symonds & Sampson. REF: 1469904



Dorchester/SXP/12.06.2026



01305 261008

dorchester@symondsandsampson.co.uk
Symonds & Sampson LLP
9 Weymouth Avenue, Brewery Square,
Dorchester, Dorset DT1 1QR



Important Notice: Symonds & Sampson LLP and their clients give notice that they have no authority to make or give any representations or warranties regarding the property. These particulars do not form part of any offer or contract and must not be relied upon as statements of fact. Some descriptions and images may have been AI-assisted; while reviewed for accuracy, interested parties should verify key details through inspection or by contacting our agents. All measurements and distances are approximate. Text, photographs, and plans are for guidance only and may not be comprehensive. It should not be assumed that the property has all necessary planning or regulatory consents, and no services, equipment, or facilities have been tested. No investigations have been made into pollution or contamination; purchasers must make their own enquiries. The property is sold subject to all existing wayleaves, easements, and rights of way (public or private), whether mentioned or not. Vendors are not required to define such rights.