

**Flat 18, Purser Court, High Street,
£615,000**

2 2 1



- 2 Bed 2 Bath Flat
- Private Balcony
- Luxury contemporary kitchens
- Private landscaped courtyard
- 12-hour concierge
- 700sqft
- 4th Floor - Alexandra Palace - facing
- Private residents gym
- residents business lounge
- Secure, gated fob-entry underground parking

Smithfield Square

Approximate Gross Internal Area = 65.6 sq m / 700 sq ft

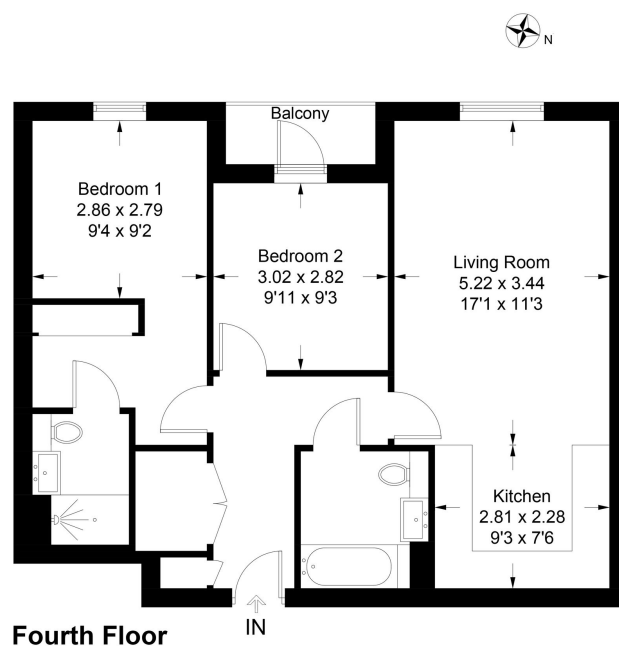


Illustration for identification purposes only, not for valuation purposes, measurements are approximate, not to scale. IPMS2

Quote RA1223 for all enquiries

Flat 18 Purser Court is an incredible 2 bedroom, 2 bathroom lateral apartment spread over 700sqft. The apartment has a private balcony overlooking Alexandra Palace and includes Silestone worktops, mirrored splashbacks and a full range of Smeg appliances.

The development was completed in 2018, and the apartment is in immaculate condition. The apartment comes with a secure underground parking space with fob entry, access to the residents gym and full access to the private landscaped residents courtyard. There is a residents business lounge, and a 12-hour concierge available.