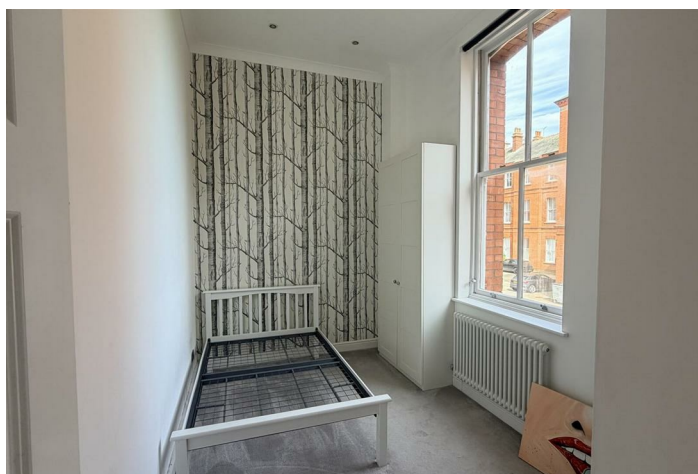




Brandesbury Square , Woodford Green, IG8 8RN

- Spacious 2-bedroom home
 - Cosy reception room
- Located in Woodford Green
- Easy access to transport links
- Historic charm with modern comfort
- Charming 1850s architecture
- Modern bathroom fittings
- Close to local amenities
- Ideal for small families
- Viewing highly recommended



Local Authority
Council Tax Band **E**
EPC Rating **C**



Smartsale4u Office

Suite 331 Kemp House, 152-160 City
Road, London, EC1V 2NX

Contact

0204 572 9091
info@smartsale4u.co.uk
smartsale4u.co.uk

Agents Note: Whilst every care has been taken to prepare these particulars, they are for guidance purposes only. All measurements are approximate and for general guidance purposes only and whilst every care has been taken to ensure accuracy, they should not be relied upon and potential buyers/tenants are advised to recheck the measurements.