



105 Faulkland View

Bath, BA2 8TP

£1,250 PCM

Cosy terraced property situated in a cul de sac in the popular village of Peasedown St John, 2 off road parking spaces, garden and within 7 miles commute to Bath.

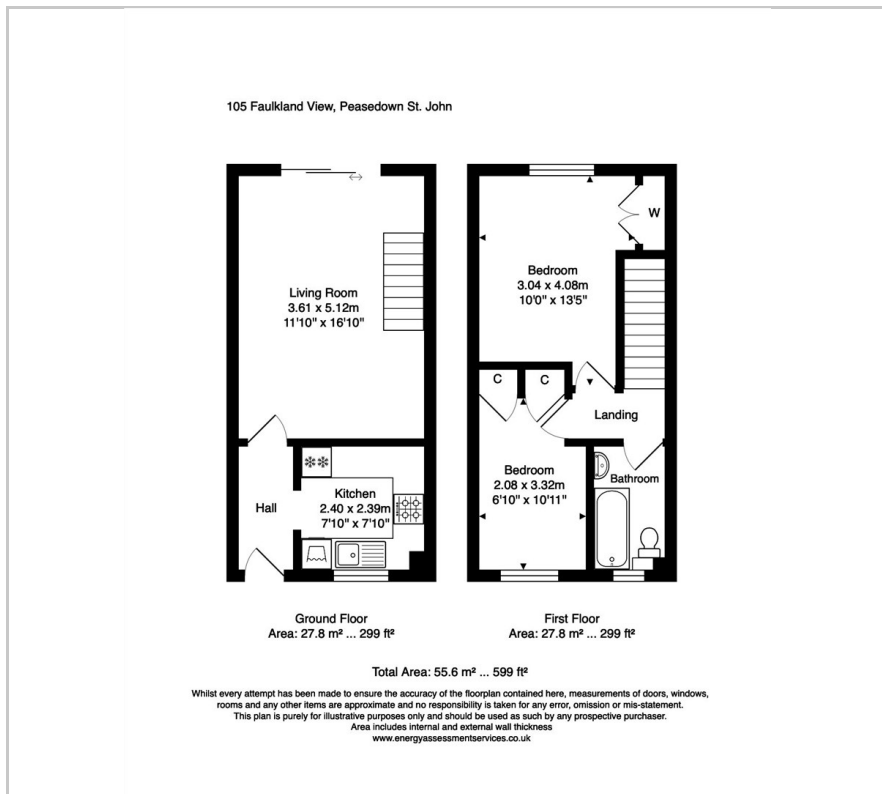
- Two double bedrooms
- Off road parking for 2
- Open plan reception room
- Lovely modern kitchen
- Rear garden with raised deck area
- Within 7 miles of Bath city centre
- Local amenities in Peasedown High Street
- Available now
- Washing machine included
- Fridge/freezer included

Viewing

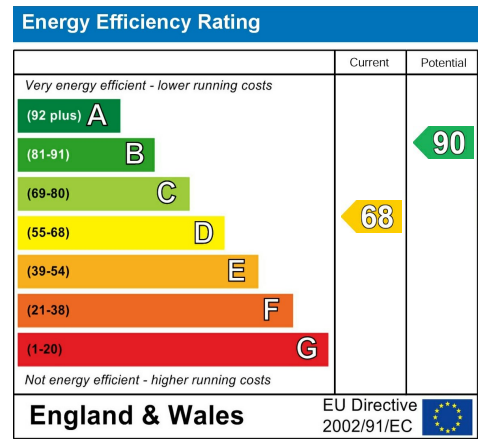
Please contact our Bath Stone Property Office on 01225422224 if you wish to arrange a viewing appointment for this property or require further information.



Floor Plan



Energy Efficiency Graph



Please give us Feedback



These particulars, whilst believed to be accurate are set out as a general outline only for guidance and do not constitute any part of an offer or contract. Intending purchasers should not rely on them as statements of representation of fact, but must satisfy themselves by inspection or otherwise as to their accuracy. No person in this firm's employment has the authority to make or give any representation or warranty in respect of the property.