



Thrawl Street, E1

£3,450 Per calendar month

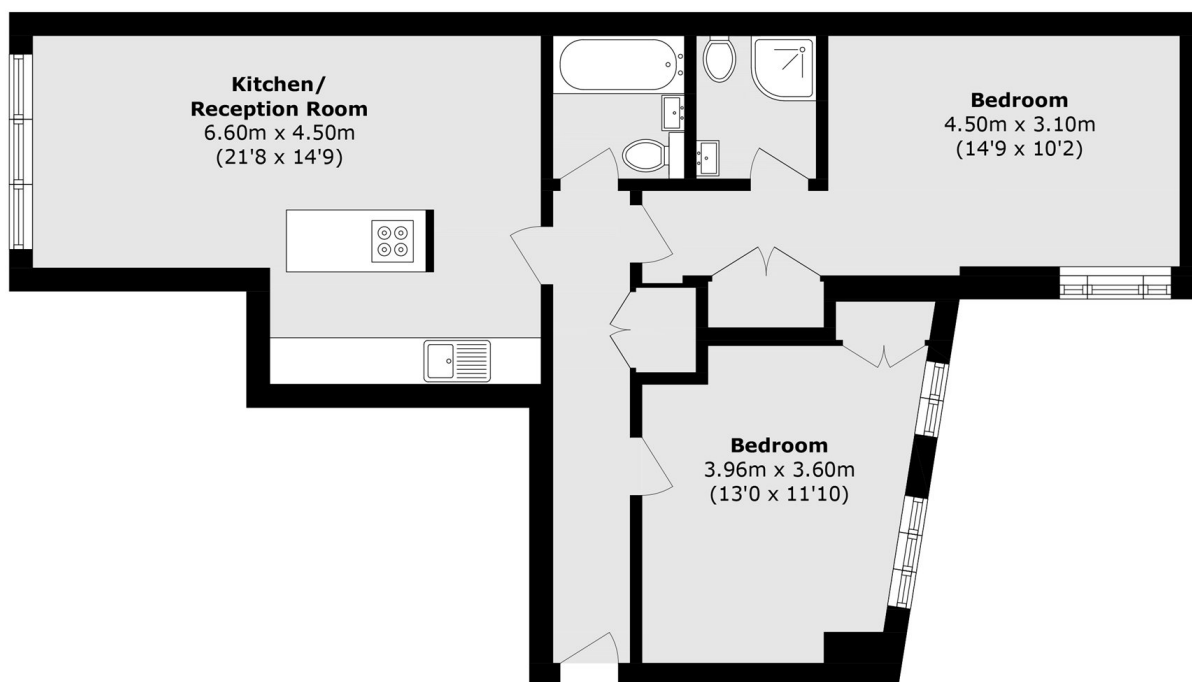
This two double bedroom apartment is full of natural light and has its own private balcony, which has amazing views of the City. The property is neutrally decorated throughout and would suit a single or professional couple.

Thrawl Street is close to Spitalfields Market. If you are a food lover, why not enjoy one of thirty stalls at lunchtime open every weekday with an array of international foods available.

Features

- Two Double Bedrooms
- Two Bathrooms
- Warehouse Conversion
- Private Balcony
- Wood Flooring
- Spitalfields Market

Thrawl Street, London, E1



Total area (approx.): 73.6 sq. m (792.2 sq. ft)