



## John Aird Court , London, W2

**£1,400 Per month**

Nestled on the desirable Porteus Road in W2, this newly renovated apartment offers a perfect blend of modern living and convenience. The room on offer spans an impressive 19.38m<sup>2</sup>, providing a comfortable and airy space. There is access to a shared balcony from the room.

Shared facilities include a newly fitted kitchen, bathroom and separate WC.

The room is offered furnished with double bed, bedside table, wardrobe, desk & chair.

Situated close to a variety of local amenities, you will find shops, cafes, and transport links just a stone's throw away, making this location both practical and appealing.

Disclaimer: THIS ADVERT IS FOR A LARGE ROOM WITHIN A 3-BEDROOM FLAT SHARE.

Available: Now

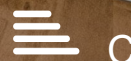
Local Authority: Westminster

Deposit Required: 5 weeks

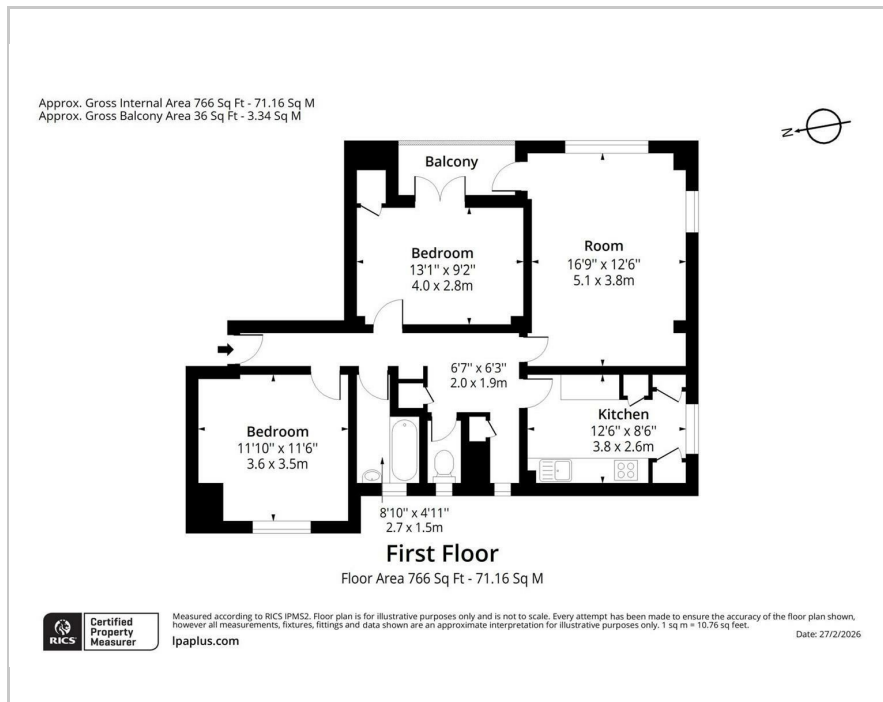
- Dual Aspect Double Bedroom
- First Floor (Building with Lift)
- Newly Renovated
- Furnished
- Close to Amenities
- Available Now
- Rent Includes Utility Bills

### Viewing

Please contact our Intra Capital Estates Office on 0207 183 6676 if you wish to arrange a viewing appointment for this property or require further information.



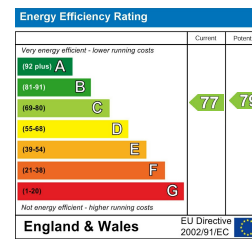
## Floor Plan



## Area Map



## Energy Efficiency Graph



These particulars, whilst believed to be accurate are set out as a general outline only for guidance and do not constitute any part of an offer or contract. Intending purchasers should not rely on them as statements of representation of fact, but must satisfy themselves by inspection or otherwise as to their accuracy. No person in this firm's employment has the authority to make or give any representation or warranty in respect of the property.

## INTRA-CAPITAL ESTATES

Paddington Works, 8 Hermitage Street, London, W2 1BE

Tel: 0207 183 6676 Email: info@intra-capital.co.uk

www.intra-capital.co.uk

Intra-Capital Estates is a trading name of Intra Capital Estates Limited, a private limited company registered in England and Wales. Registered number: 11840427. VAT registration number: 31763281. Registered office Paddington Works, 8 Hermitage Street, London, W2 1BE.

## MODERN APPROACH TRADITIONAL VALUES

