



## Evelyn Close, TW2

£775,000

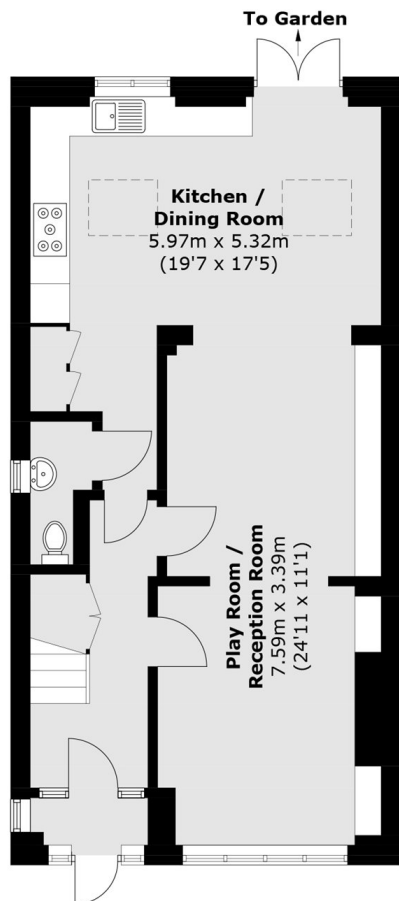
A beautiful four bedroom semi detached house offered to the market with off street parking for two cars, a summer house/home office in fantastic school catchments. This property is not to be missed.

Evelyn Close is a popular residential cul-de-sac that is close to Whitton High Street where there is a vast array of shops and the mainline station with its fast link to London Waterloo.

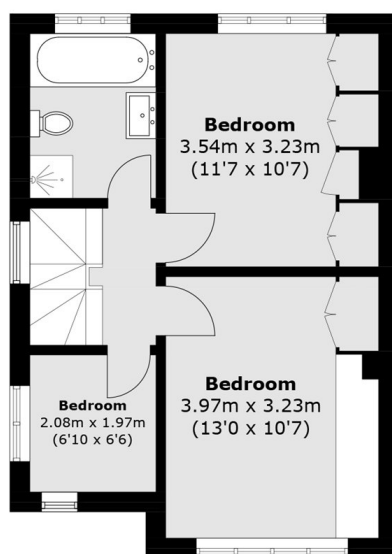
### Features

- Off Street Parking
- Semi Detached
- Four Bedrooms
- Summer House/Home Office
- Beautifully Presented
- Great School Catchments

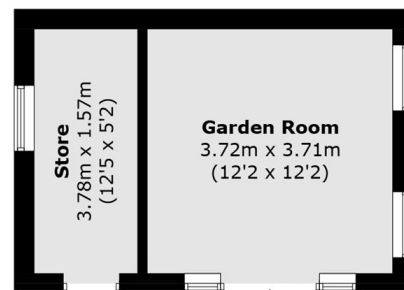
# Evelyn Close, Whitton, TW2



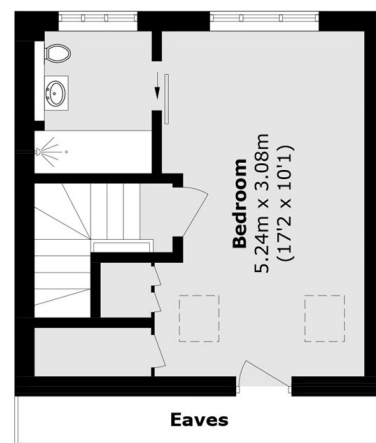
**Ground Floor**



**First Floor**



(Not Shown In Actual  
Location / Orientation)



**Second Floor**

Total area (approx.): 125.9 sq. m (1,355.2 sq. ft)  
(Excluding Eaves)

Outbuilding: 20.5 sq. m (220.7 sq. ft)

Total: 146.4 sq. m (1,575.9 sq. ft)