

## £600,000

### PORTCHESTER HEIGHTS, PORTCHESTER, PO16 8JU



- Five Bedrooms
- Entrance Hall & Downstairs Cloakroom
- Lounge & Separate Dining Room
- Fitted Kitchen/Breakfast Room
- Conservatory
- First Floor Study/Office
- En-Suite Shower Room
- Family Bathroom
- Gas Central Heating & Double Glazed Windows
- Off Street Parking
- Integral Garage/Workshop
- Enclosed Low Maintenance Garden

#### Portchester Office

92 West Street Portchester Hampshire PO16 9UQ

Tel: 02392 327 070 | E: portchester@fenwicks-estates.co.uk

www.fenwicks-estates.co.uk

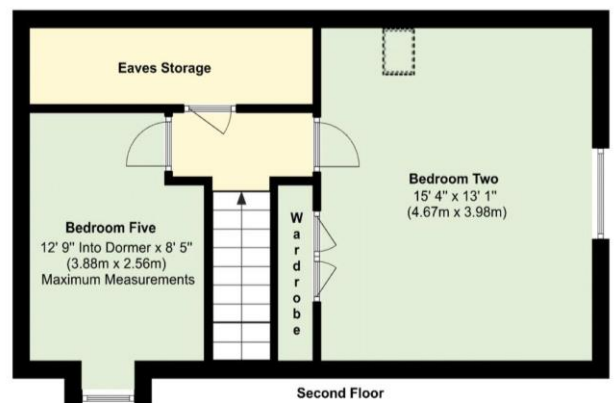
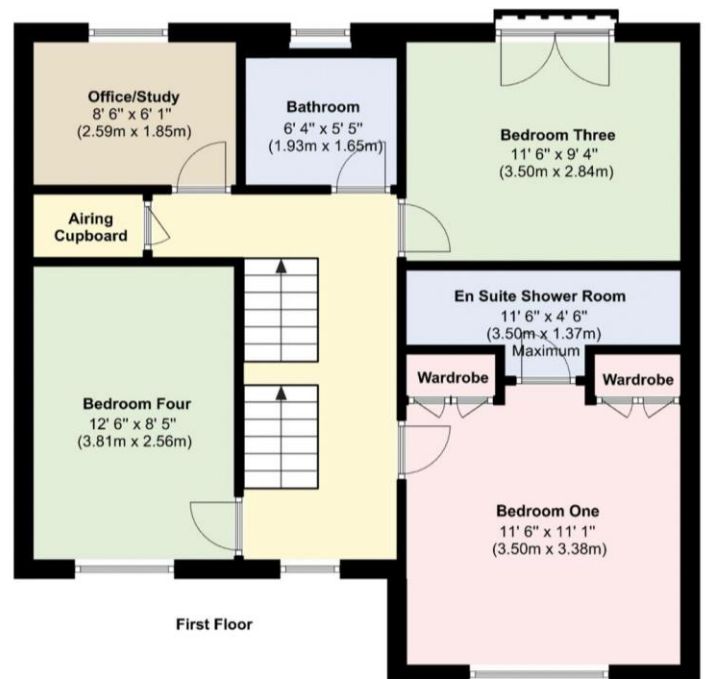
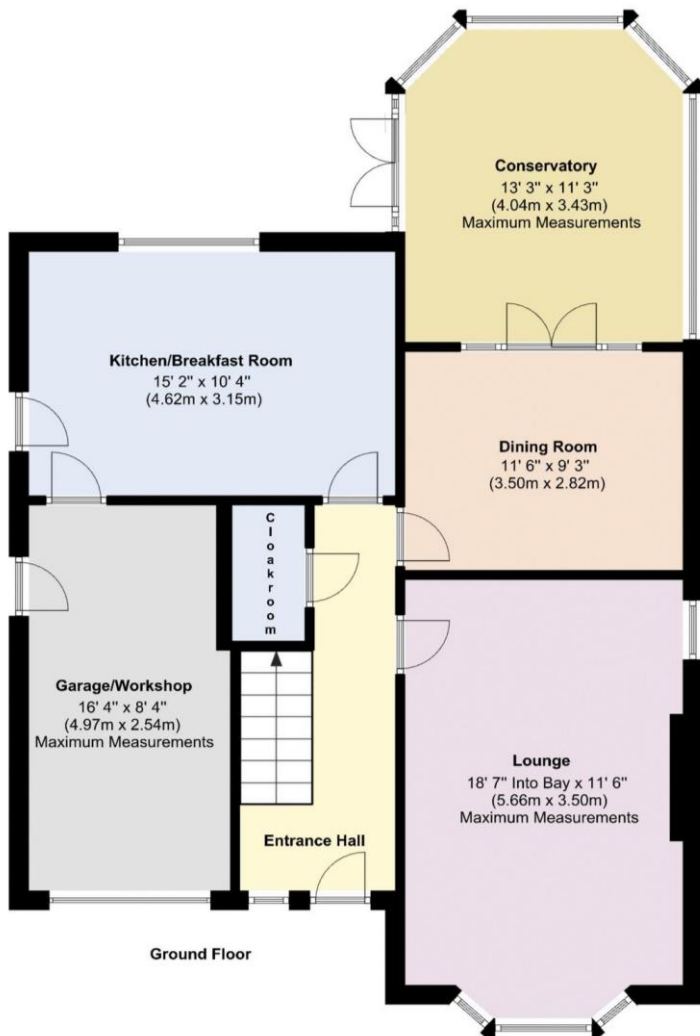


Score	Energy rating	Current	Potential
92+	A		
81-91	B		
69-80	C	73 C	80 C
55-68	D		
39-54	E		
21-38	F		
1-20	G		

Property Reference: P2853

Council Tax Band: F

Floor Plans (For illustrative purposes and not drawn exactly to scale)



## Portchester Office

92 West Street Portchester Hampshire PO16 9UQ

Tel: 02392 327 070 | E: portchester@fenwicks-estates.co.uk

www.fenwicks-estates.co.uk



## The Accommodation Comprises:-

Covered entrance with outside light and part double glazed composite front door with double glazed window to side into:

## Entrance Hall:-

Stairs to first floor, radiator and coving to flat ceiling. Door to:

## Downstairs Cloakroom-

5' 9" x 3' 0" (1.75m x 0.91m)

Suite comprising: close coupled W.C, pedestal wash hand basin, flat and sloping ceiling, part tiled walls, radiator and extractor fan.

## Lounge:-

18' 7" Into Bay x 11' 6" (5.66m x 3.50m) Maximum Measurements

Dual aspect room with UPVC double glazed bay window to front elevation and further UPVC double glazed window to side elevation, two radiators, TV aerial point, feature fireplace and coving to flat ceiling with two ceiling roses.



## Kitchen/Breakfast Room:-

15' 2" x 10' 4" (4.62m x 3.15m)

UPVC double glazed window to rear elevation overlooking the garden, fitted range of matching base and eye level storage units with underlighting to wall units, roll top worksurfaces, one and half bowl sink unit with mixer tap, part tiled walls, built-in eye level oven and grill, hob with concealed extractor, space and plumbing for washing machine and dishwasher, integrated fridge/freezer, space for table and chairs, radiator, internal door to garage/workshop, flat ceiling with spotlighting inset and part double glazed door leading to garden.



## Portchester Office

92 West Street Portchester Hampshire PO16 9UQ

Tel: 02392 327 070 | E: portchester@fenwicks-estates.co.uk

www.fenwicks-estates.co.uk



**Dining Room:-**  
11' 6" x 9' 3" (3.50m x 2.82m)

Wood effect laminate flooring, space for table and chairs, radiator and coving to flat ceiling with central ceiling rose. UPVC double glazed doors with matching side panels into:



**Conservatory:-**  
13' 3" x 11' 3" (4.04m x 3.43m) Maximum Measurements

UPVC double glazed French doors and windows overlooking and accessing the rear garden, wood effect laminate flooring and power connected.



**First Floor Landing:-**

UPVC double glazed window to front elevation, radiator, continuation of stairs to second floor, walk-in airing cupboard and coving to flat ceiling. Doors to:

**Bedroom One:-**  
11' 6" x 11' 1" (3.50m x 3.38m)

UPVC double glazed window to front elevation, radiator, built-in wardrobes and coving to flat ceiling. Door to:



**Portchester Office**

92 West Street Portchester Hampshire PO16 9UQ

Tel: 02392 327 070 | E: [portchester@fenwicks-estates.co.uk](mailto:portchester@fenwicks-estates.co.uk)

[www.fenwicks-estates.co.uk](http://www.fenwicks-estates.co.uk)



### Bedroom Four:-

12' 6" x 8' 5" (3.81m x 2.56m)

UPVC double glazed window to front elevation, radiator and coving to flat ceiling.



### En Suite Shower Room-

11' 6" x 4' 6" (3.50m x 1.37m) Maximum Measurements

Opaque UPVC double glazed window to side elevation, suite comprising: shower cubicle with Mira electric shower, pedestal wash hand basin, close coupled W.C, part tiled walls, radiator, shaver socket, tiled flooring and flat ceiling with spotlighting inset.



### Office/Study:-

8' 6" x 6' 1" (2.59m x 1.85m)

UPVC double glazed window rear elevation overlooking the garden, radiator and coving to flat ceiling.

### Bathroom:-

6' 4" x 5' 5" (1.93m x 1.65m)

Opaque UPVC double glazed window rear elevation, suite comprising: panelled bath with mixer tap and handheld shower attachment, further Aqualisa shower unit over, folding shower screen, pedestal wash hand basin, close coupled W.C, tiled walls, chrome heated towel rail, tiled flooring, extractor and flat ceiling with spotlighting inset.

### Bedroom Three:-

11' 6" x 9' 4" (3.50m x 2.84m)

UPVC double glazed French doors with Juliet balcony to rear elevation overlooking the garden, radiator and coving to flat ceiling.



### Portchester Office

92 West Street Portchester Hampshire PO16 9UQ

Tel: 02392 327 070 | E: portchester@fenwicks-estates.co.uk

www.fenwicks-estates.co.uk

## Second Floor Landing:-

Flat and sloping ceiling with spotlighting inset and access to built-in eaves storage. Doors to:

## Bedroom Two:-

15' 4" x 13' 1" (4.67m x 3.98m)

Dual aspect room with UPVC double glazed window to side elevation with views towards Portsmouth Harbour and further double glazed Velux window to rear elevation, flat and sloping ceilings with spotlighting inset, radiator, and built-in wardrobe.



## Bedroom Five:-

12' 9" Into Dormer x 8' 5" (3.88m x 2.56m) Maximum Measurements

UPVC double glazed dormer window to front elevation, radiator and flat and sloping ceiling.

## Outside:-

Block paved off street parking to the front and shingle area to side with shrubs inset. Driveway leads to:



## Garage/Workshop:-

16' 4" x 8' 4" (4.97m x 2.54m) Maximum Measurements

Roller door, power and light connected, internal door to kitchen/breakfast room and part double glazed side courtesy door.

## Rear Garden:-

Enclosed, low maintenance, two patios for entertaining, raised shrub borders, slate chipped areas, water tap and wooden gate.

## Portchester Office

92 West Street Portchester Hampshire PO16 9UQ

Tel: 02392 327 070 | E: portchester@fenwicks-estates.co.uk

www.fenwicks-estates.co.uk





**Disclaimer:** These particulars are set out as a general outline in accordance with the Consumer Protection from Unfair Trading Regulations 2008 (CPR's) and Business Protection from Misleading Marketing Regulations 2008 (BPR's) only for the guidance of intending purchasers or lessees, and do not constitute any part of an offer or contract. Details are given without any responsibility, and any intending purchasers, lessees or third parties should not rely on them as statements or representations of fact, but must satisfy themselves by inspection or otherwise as to the correctness of each of them.

We have not carried out a structural survey and the services, appliances and specific fittings have not been tested. All photographs, measurements, floor plans and distances referred to are given as a guide only and should not be relied upon for the purchase of carpets or any other fixtures or fittings. Gardens, roof terraces, balconies and communal gardens as well as tenure and lease details cannot have their accuracy guaranteed for intending purchasers. Lease details, service ground rent (where applicable) are given as a guide only and should be checked and confirmed by your solicitor prior to exchange of contracts.

No person in the employment of Fenwicks Estates Ltd has any authority to make any representation or warranty whatever in relation to this property. Purchase prices, rents or other prices quoted are correct at the date of publication and, unless otherwise stated, exclusive of VAT.

**Data Protection:** We retain the copyright in all advertising material used to market this Property.

**Money Laundering Regulations 2017:** Intending purchasers will be required to produce identification documentation once an offer is accepted

Your home is at risk if you do not keep up repayments on mortgage or other secured loans.

## Portchester Office

92 West Street Portchester Hampshire PO16 9UQ

Tel: 02392 327 070 | E: portchester@fenwicks-estates.co.uk

www.fenwicks-estates.co.uk

