

Bradley Road, SW4

£400,000

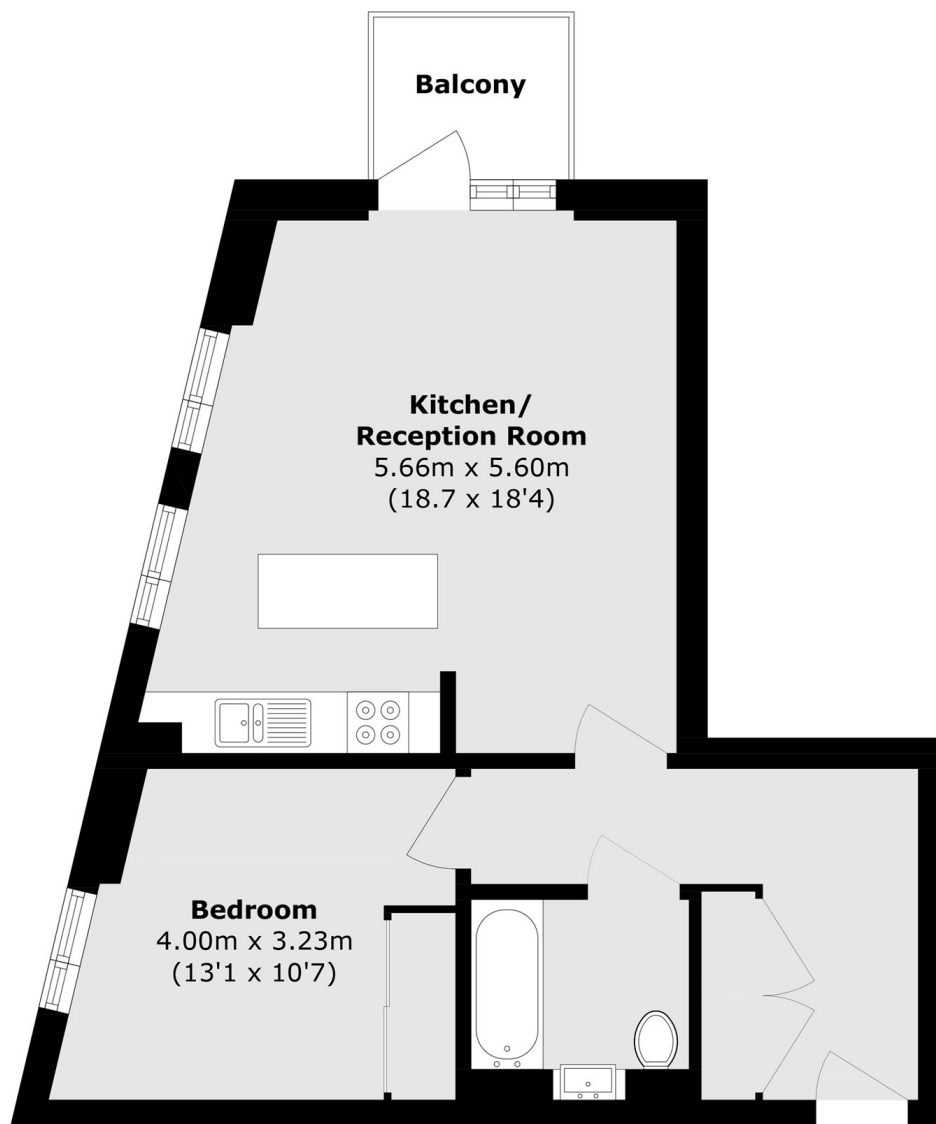
OFFERS IN EXCESS OF This impressive apartment is situated on the coveted top floor of a desirable, private development. The naturally bright and airy accommodation expertly blends comfortable living with impressive entertaining spaces. Comprising a large open plan reception room with a well-equipped kitchen and an adjoining terrace, a double bedroom with a fitted wardrobe, a contemporary bathroom and hallway storage.

Bradley Road is situated off the Kings Avenue, conveniently located for easy access to Clapham High Street, Abbeville Village and Brixton, nearby transport links include Clapham Common (Northern line) and Brixton (Victoria line).

Features

- Private Development
- Open Plan Reception
- Modern Kitchen
- Double Bedroom
- Private Terrace
- Long Lease

Bradley Road, London, SW4



Total area (approx.): 52.1 sq. m (560.8 sq. ft)
Balcony area (approx.): 3.0 sq. m (32.2 sq. ft)