



WILLESDEN LANE, NW6

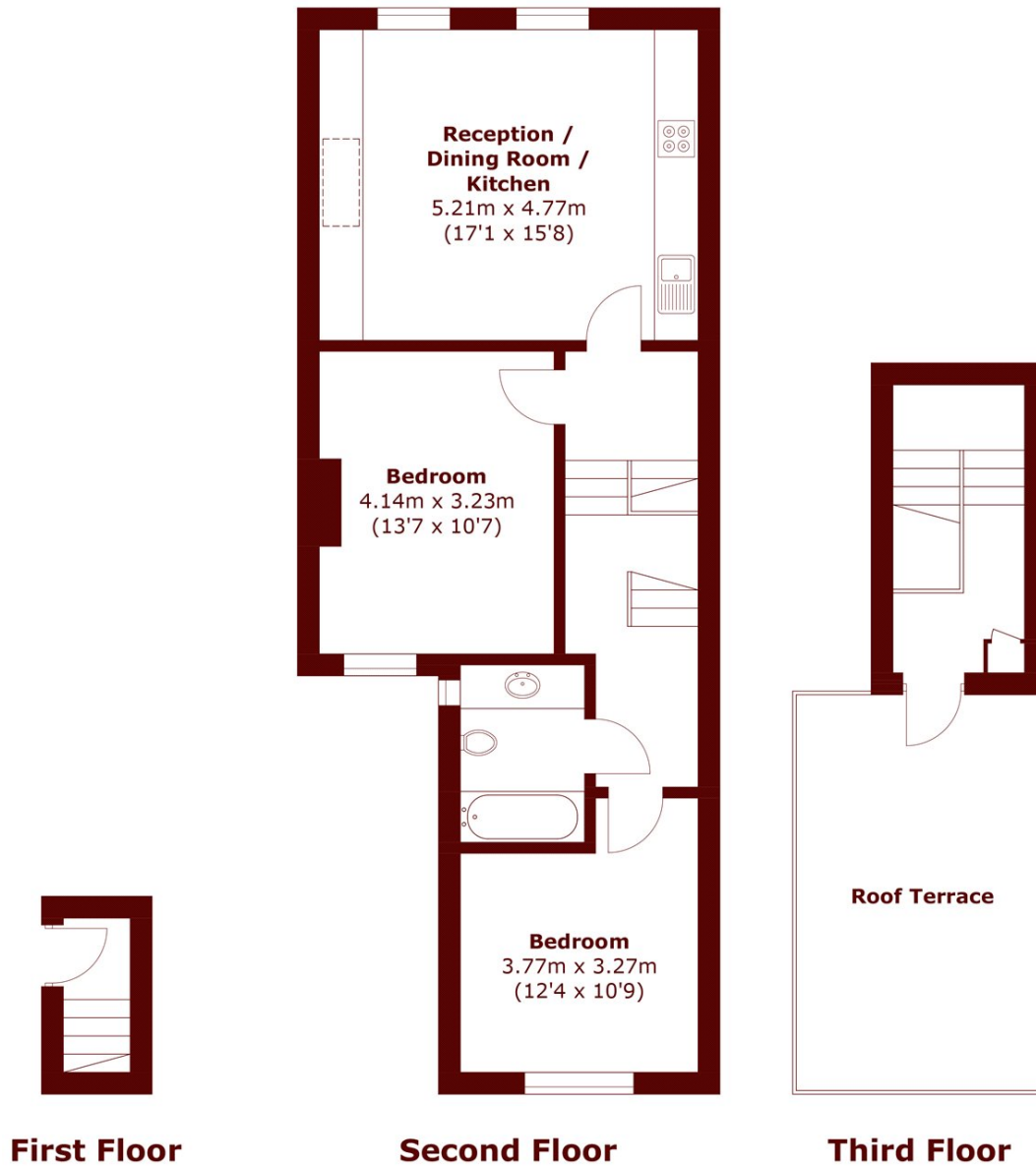
£450,000

This beautifully presented two-bedroom apartment offers an abundance of natural light, modern interiors, and generous living space. Set within a charming period building, the property boasts a spacious open-plan

Chain Free
Large Roof Terrace
Two Double Bedrooms

High Specification Finish
High Ceilings Throughout
Split Level

STEP INSIDE WILLESDEN LANE



Total area (approx.): 72.9 sq. m (784.7 sq. ft)
Roof Terrace: 18.4 sq. m (198.0 sq. ft)

Queen's Park
020 7624 4513

Energy Rating: D We aim to make our particulars both accurate and reliable. However, they are not guaranteed; nor do they form part of an offer or contract. If you require clarification on any points then please contact us, especially if you're traveling some distance to view. Please note that appliances and heating systems have not been tested and therefore no warranties can be given as to their good working order

MARSH &
PARSONS