



## Helix Road, Brixton, SW2

4 bedroom flat - conversion for sale

£725,000

Share of Freehold

### Property Details

This recently renovated four bedroom, two bathroom flat spans the first and second floors of a charming Victorian property on a quiet, tree-lined street. The handsome Victorian façade with classic brickwork and decorative detailing sets a welcoming tone. Inside, a private internal staircase leads to a bright, open-plan kitchen, reception, and dining area with high ceilings and large sash windows, ideal for entertaining or everyday living. The sleek, handleless matt finish kitchen features high-quality integrated appliances including a double Neff oven, induction hob, dishwasher, and fridge/freezer. The second bedroom on this floor offers a Juliette balcony and built-in wardrobes. Upstairs, the principal suite includes a walk-in shower and eaves storage, while two further bedrooms enjoy natural light and generous proportions. Both bathrooms are elegantly finished, with modern fixtures and frameless glass showers. Blending Victorian character with contemporary style, this turnkey flat offers a calm, sophisticated home with every detail considered.

### Features

- Four bedrooms
- Two bathrooms
- Juliette balcony
- Victorian conversion
- Over 1,300 square feet split over multiple floors
- Recently renovated
- Brixton centre around a ten-twelve minute walk
- Herne Hill a fifteen-minute walk
- Victoria Line, Thameslink and trains
- Share of freehold. Chain-free

Council tax band C    EPC rating C (76)

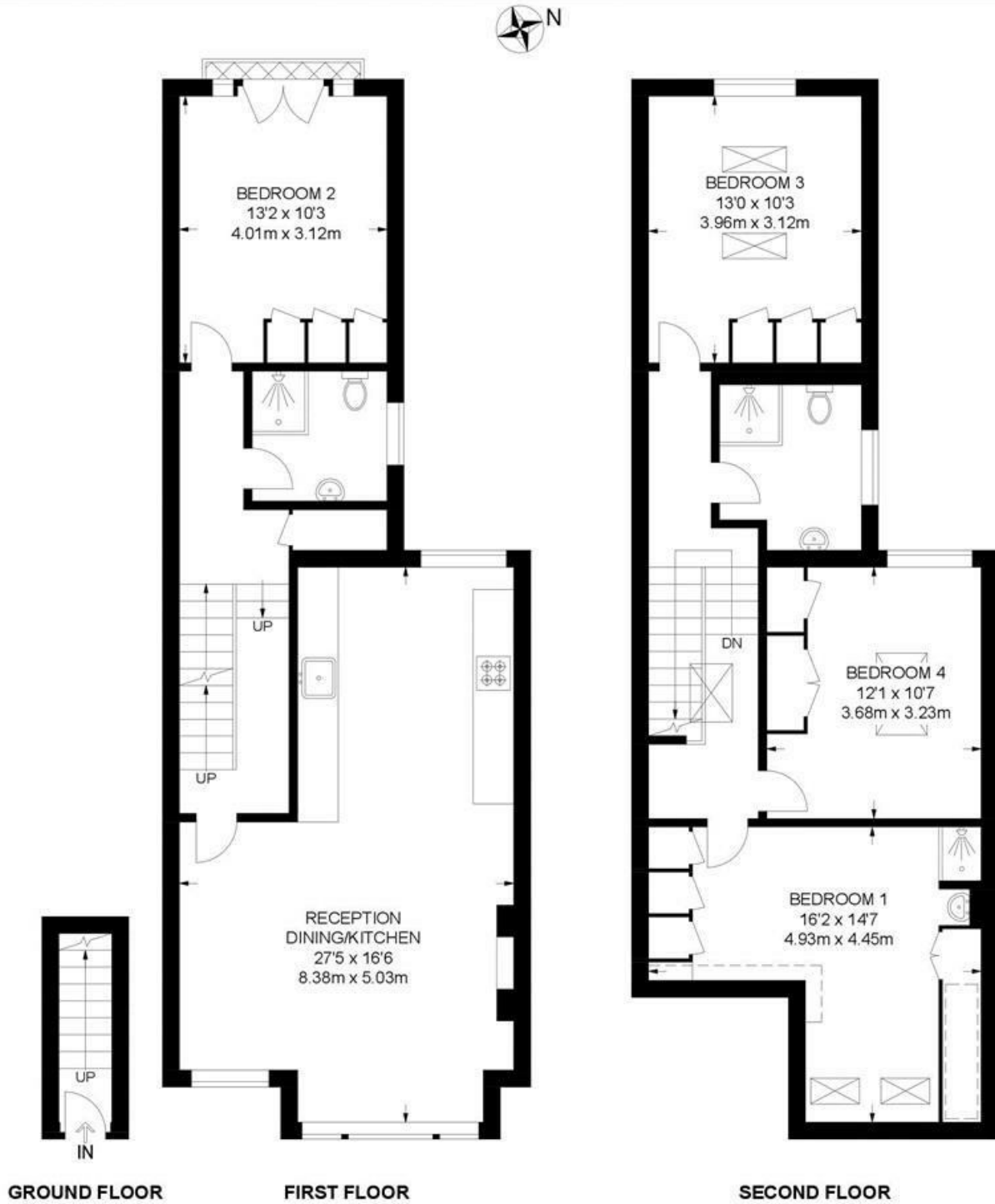




Helix Road, Brixton, SW2

**Helix Road, SW2**  
**4 Bedroom Flat**

APPROXIMATE GROSS INTERNAL AREA: 1337 SQ FT / 124.2 SQ M



While we try our very best, floor plans are produced as a guide only and we take no responsibility for the precise accuracy with which any property is represented.

Helix Road, Brixton, SW2

