



Algitha Road, Skegness PE25 2AG

welcome to

Algitha Road, Skegness

8 BED GUEST HOUSE WITH OWNERS AREA

Ground floor offers a lounge, bar area, dining room & kitchen. Owners accomodation offers two bedrooms, lounge, conservatory & bathroom. Externally there a number of parking spaces to the front of the property.



Entrance

Entrance porch has front door leading into:

Hallway

Has stairs leading to the first floor and doors into the following rooms:

Lounge

13' 11" min x 12' 2" (4.24m min x 3.71m)

Has a window to the front elevation and access into:

Dining/ Bar Area

12' 2" x 14' (3.71m x 4.27m)

Has a bar area, ample dining table space for guests and door into:

Kitchen

22' 7" x 9' 11" (6.88m x 3.02m)

Comprising of a range of wall, base and drawer units with worktop space over, sink, ample space for appliances, window to the rear and a door leading externally.

Owners Accommodation**Lounge**

11' 2" x 12' 5" (3.40m x 3.78m)

Has door leading into:

Sun Room

Has windows to 3 elevations and a door leading to the rear patio area.

External

Externally the vendors have a patio area.

Bedroom 1

21' 2" x 9' 1" (6.45m x 2.77m)

Has a window and door into:

En-Suite

Has a shower, WC and hand wash basin

Bedroom 2

10' 5" x 9' 8" (3.17m x 2.95m)

Has an opaque window and built in wardrobes and

radiator.

Guest Rooms**Sitting Area**

12' 1" x 12' 11" (3.68m x 3.94m)

Has a window, base and wall units.

Room 1

10' 5" x 9' 3" (3.17m x 2.82m)

Has a window, electric radiator and door into:

En-Suite

Has a shower, hand wash basin and WC.

Landing

There is a door leading out to the balcony area which is for the guests to use. There are also doors leading into the following rooms:

Room 2

12' 7" x 11' 2" (3.84m x 3.40m)

Has a window, radiator and door into:

En-Suite

Has a shower, sink, hand wash basin

Room 3

12' 1" x 8' 5" (3.68m x 2.57m)

Has a window, radiator and door into:

En-Suite

Has a shower, Sink and hand wash basin

Room 4

11' 3" x 12' 2" (3.43m x 3.71m)

Has a window, radiator and door into:

En-Suite

Has a shower, Hand wash basin and WC.

Room 5

10' 8" x 12' 2" (3.25m x 3.71m)

Has a window, radiator and door into:

En-Suite

Has a shower, WC and hand wash basin

Room 6

12' 3" x 12' 9" (3.73m x 3.89m)

Has a window and radiator. Door into

En-Suite

Has a shower, WC and hand wash basin.

Landing

Doors into:

Sitting Room

10' 4" x 12' 11" (3.15m x 3.94m)

Has a window and radiator

Room 7

10' 7" x 13' 11" (3.23m x 4.24m)

Has a window and radiator and door into:

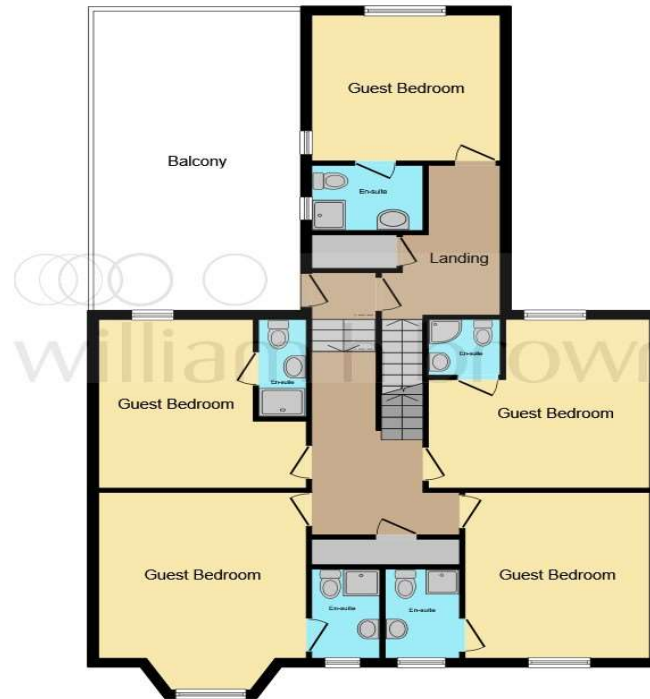


view this property online williamhbrown.co.uk/Property/SKG109670

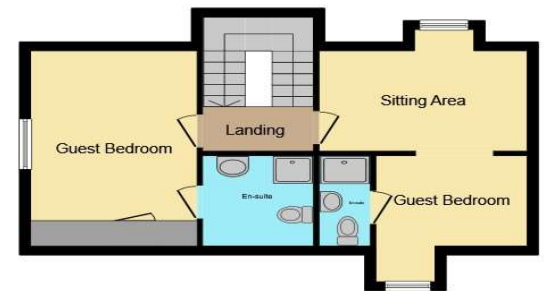




Ground Floor



First Floor



Second Floor

This floor plan is for illustrative purposes only. It is not drawn to scale. Any measurements, floor areas (including any total floor area), openings and orientation are approximate. No details are guaranteed, they cannot be relied upon for any purpose and they do not form part of any agreement. No liability is taken for any error, omission or misstatement. A party must rely upon its own inspection(s). Powered by www.focalagent.com

welcome to

Algitha Road, Skegness

- 8 BEDROOMS ALL WITH EN-SUITES
- 2 BED OWNERS ACCOMODATION WITH LOUNGE, CONSERVATORY & BATHROOM
- GUEST LOUNGE, BAR AREA & DINING ROOM
- PARKING SPACES TO THE FRONT
- WALKING DISTANCE TO TOWN, BEACH AND BUS & TRAIN STATION

Tenure: Freehold EPC Rating: D

Council Tax Band: A

directions to this property:

See Multi-map illustration

£300,000



Please note the marker reflects the postcode not the actual property

view this property online williamhbrown.co.uk/Property/SKG109670



Property Ref:
SKG109670 - 0008

1. MONEY LAUNDERING REGULATIONS Intending purchasers will be asked to produce identification documentation at a later stage and we would ask for your co-operation in order that there is no delay in agreeing the sale. 2. These particulars do not constitute part or all of an offer or contract. 3. The measurements indicated are supplied for guidance only and as such must be considered incorrect. Potential buyers are advised to recheck measurements before committing to any expense. 4. We have not tested any apparatus, equipment, fixtures or services and it is in the buyers interest to check the working condition of any appliances. 5. Where an EPC, or a Home Report (Scotland only) is held for this property, it is available for inspection at the branch by appointment. If you require a printed version of a Home Report, you will need to pay a reasonable production charge reflecting printing and other costs. 6. We are not able to offer an opinion either written or verbal on the content of these reports and this must be obtained from your legal representative. 7. Whilst we take care in preparing these reports, a buyer should ensure that his/her legal representative confirms as soon as possible all matters relating to title including the extent and boundaries of the property and other important matters before exchange of contracts.

William H Brown is a trading name of Sequence (UK) Limited which is registered in England and Wales under company number 4268443, Registered Office is Cumbria House, 16-20 Hockliffe Street, Leighton Buzzard, Bedfordshire, LU7 1GN. VAT Registration Number is 500 2481 05.

 **william h brown**



01754 768311



Skegness@williamhbrown.co.uk



20 Roman Bank, SKEGNESS, Lincolnshire, PE25 2RU



williamhbrown.co.uk