



40a Jessops Lane, Gedling - NG4 4BQ

Guide Price **£675,000**



40a Jessops Lane

Gedling, Nottingham

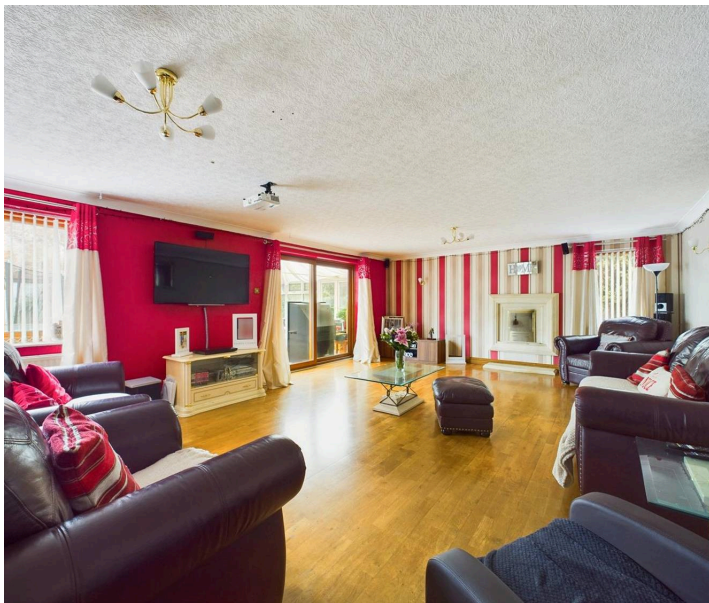
Council Tax band: G

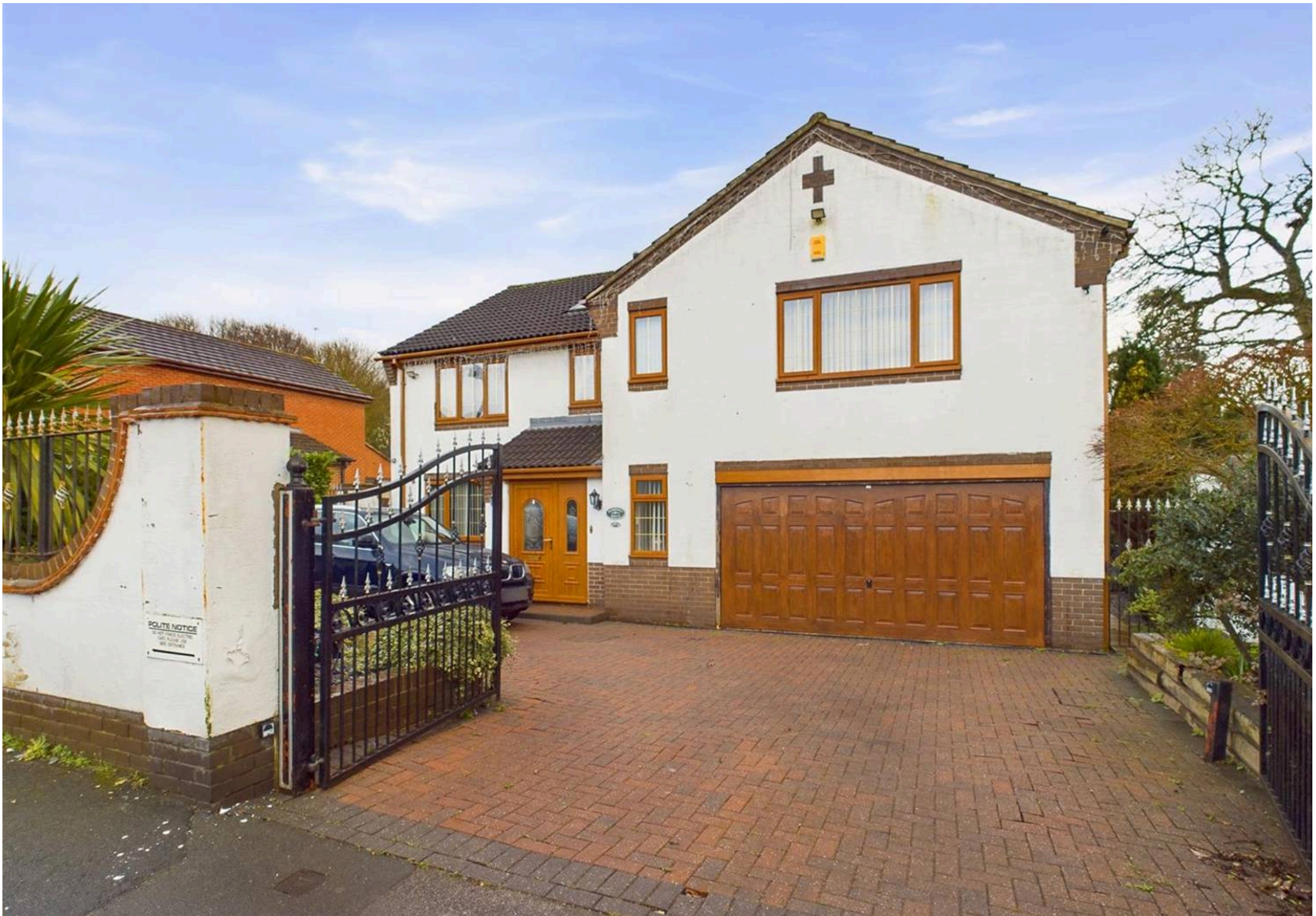
Tenure: Freehold

EPC Energy Efficiency Rating: D

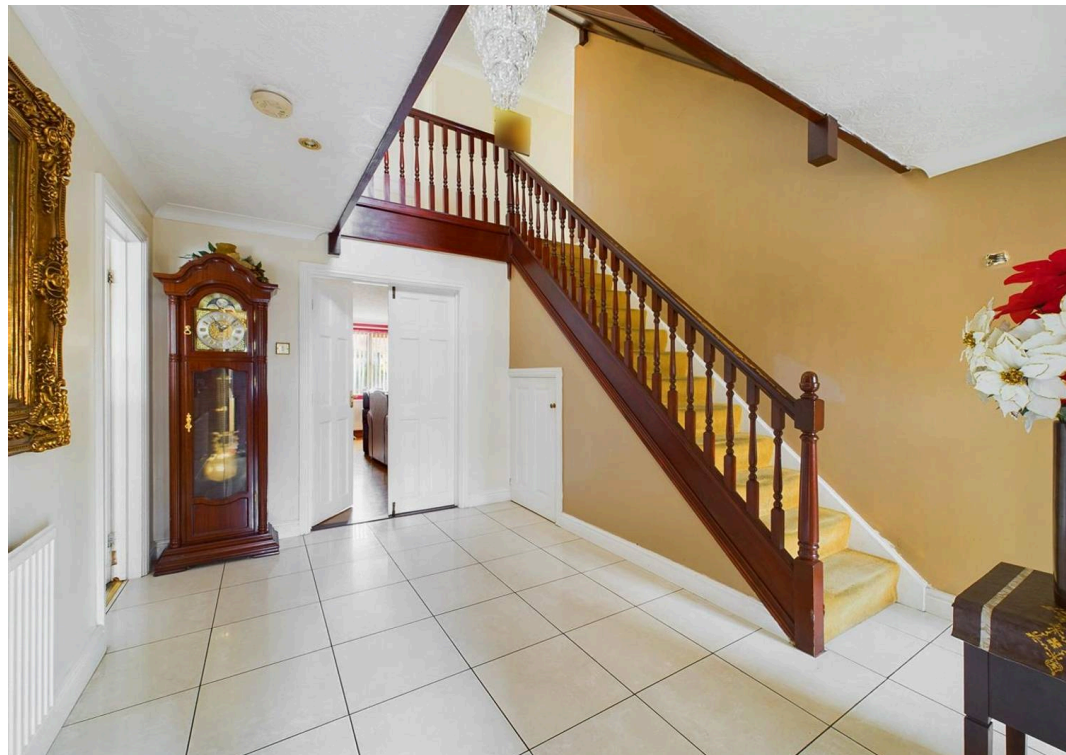
EPC Environmental Impact Rating: D

- Executive detached family home
- Offers substantial family accommodation in the heart of Gedling Village
- Impressive entrance hall with cloakroom/WC
- Spacious lounge with an adjoining conservatory
- Separate dining room and home office
- Breakfast kitchen with adjoining utility room
- Stunning galleried landing
- Seven bedrooms with 2 en-suites and a main bedroom walk-in dressing area
- Low-maintenance initial garden and further established side garden
- Driveway with electric gates and a double garage





POLITE NOTICE
PLEASE DO NOT
ENTER THE DRIVE
OR GARDEN
UNLESS YOU
ARE INVITED

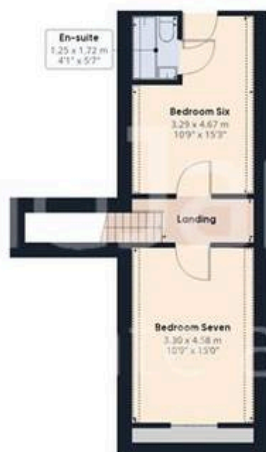




Floor 0



Floor 1



Floor 2

Approximate total area⁽¹⁾

315.19 m²

3392.72 ft²

Reduced headroom

3.55 m²

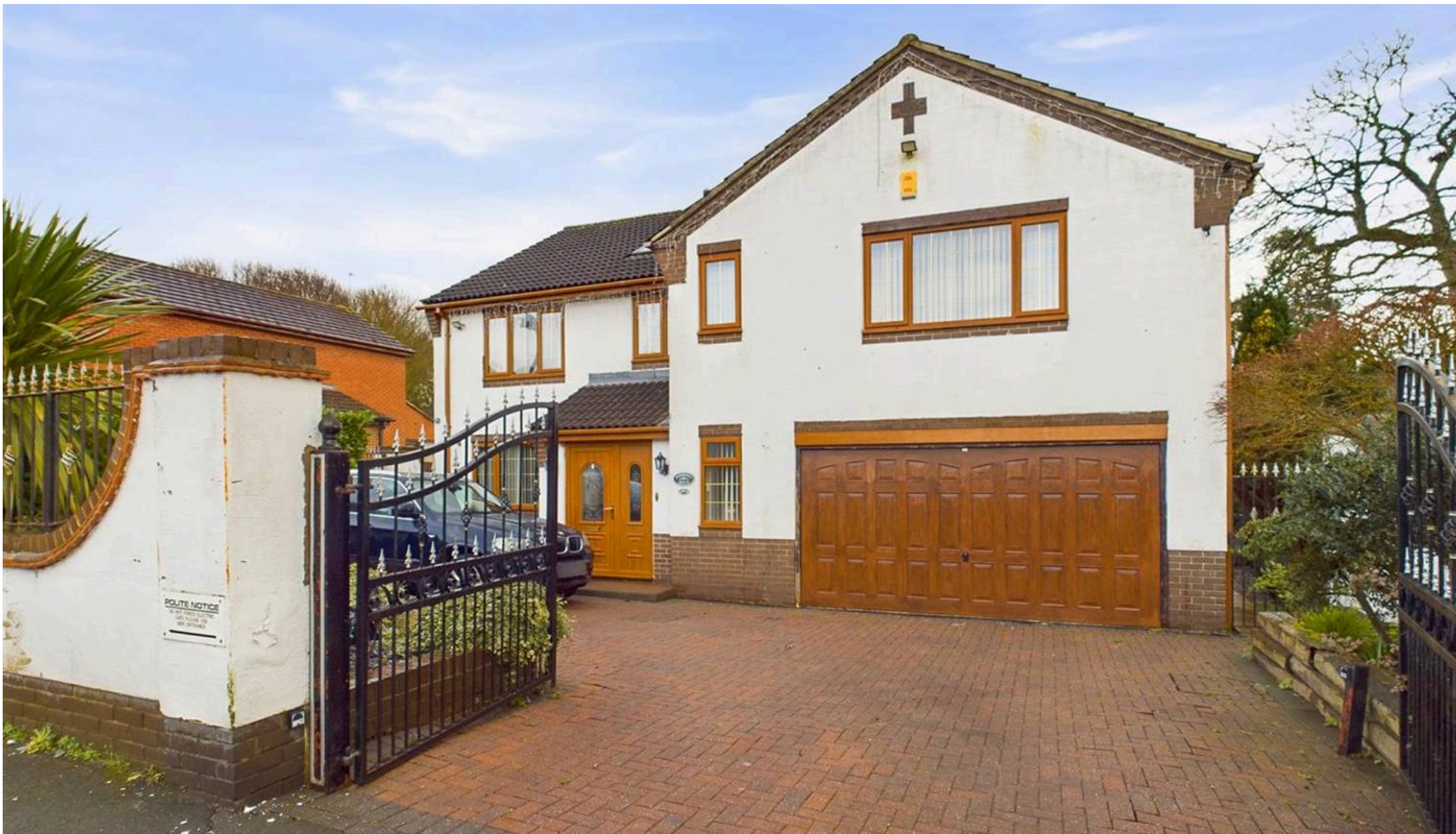
38.23 ft²

(1) Excluding balconies and terraces

 Reduced headroom
(below 1.5m/4.92ft)

While every attempt has been made to ensure accuracy, all measurements are approximate, not to scale. This floor plan is for illustrative purposes only.

GIRAFFE360



David James Estate Agents

David James Estate Agents, 45B Plains Road - NG3 5JU

0115 962 4213 • mapperley@david-james.com • www.david-james.com

These particulars are produced in good faith and are set out as a general guide only. Measurements are approximate and floor plans are for illustrative purposes only. Services have not been tested. We have established professional relationships with third-party suppliers for the provision of services to Clients, details of which can be found on the property listing page on our website.