



50 High Street, Pewsey

Guide Price £230,000

mcFarlane  
property.com



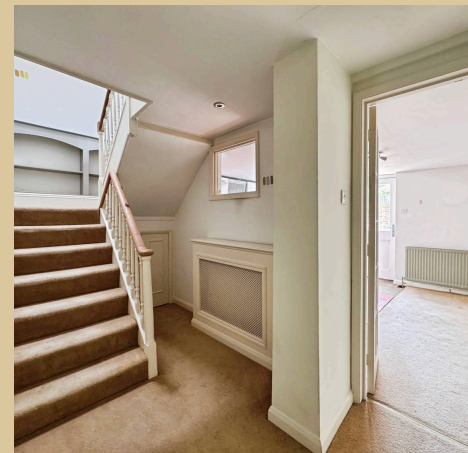
## 50 High Street

**No. 50 High Street** is an attractive red-brick Victorian townhouse, full of character and charm. Set behind wrought-iron railings and accessed through an elegant arched doorway, this deceptively spacious home offers versatile accommodation, period features, and the rare benefit of off-road parking.

Stepping through the entrance porch, you are welcomed into the delightful sitting room. A large bay window fitted with secondary glazing floods the room with natural light, while the feature fireplace with wood-burning stove provides a cosy focal point. High ceilings enhance the sense of space and showcase the property's Victorian heritage.

To the rear of the property is a generous kitchen/dining room, fitted with a range of eye and base-level units complemented by wooden worktops and stylish metro-tiled splashbacks. There is ample space for white goods, storage, and a dining table, making it an ideal space for everyday living and entertaining. A window overlooks the south-east-facing courtyard garden, while a door provides direct access outside.

A particularly characterful staircase rises from a spacious landing area, complete with useful understairs storage, built-in bookshelves, and exposed beams that continue throughout much of the property.



On the first floor, a large reception area offers flexible accommodation and could easily be adapted to create a third bedroom, subject to any necessary consents. Floor-to-ceiling bookshelves and a quirky feature window give this room a unique charm, making it an ideal study, reading room, or additional living space.

The rear bedroom enjoys high ceilings, exposed oak beams, secondary-glazed windows, and fitted wardrobes. The principal bedroom, positioned at the front of the property overlooking the High Street, is a spacious room with fitted wardrobes and secondary glazing. It benefits from an en-suite shower room with tiled flooring and a heated towel rail.

The family bathroom is beautifully in keeping with the period style of the home, featuring exposed oak beams, a Velux window that fills the room with natural light, tiled flooring, and a bath with shower over. A useful airing cupboard completes the first-floor accommodation.

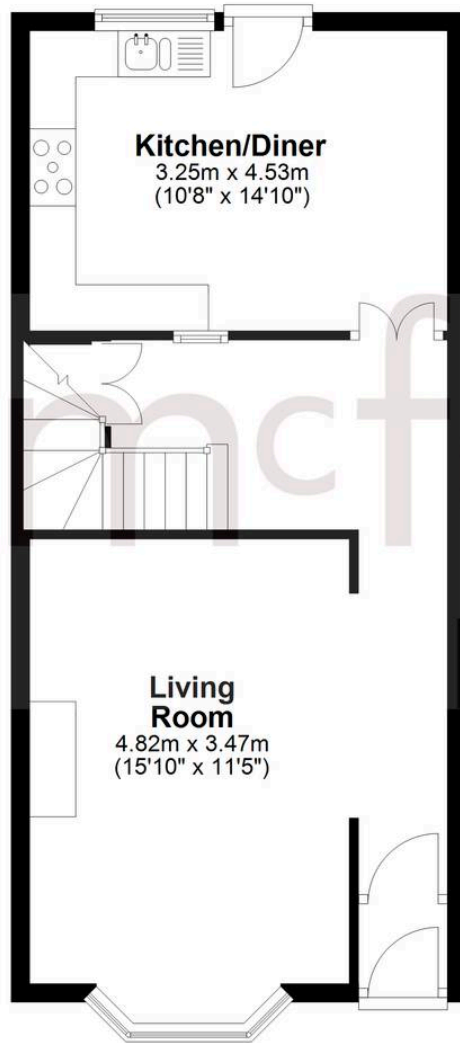
Outside, the south-east-facing courtyard garden provides a private and low-maintenance outdoor space, perfect for relaxing or entertaining. A rear gate offers convenient access to two allocated parking spaces, a valuable addition for a property in such a central location.

Combining period charm with practical modern living, No. 50 High Street is a wonderful home that offers flexible accommodation, character features throughout, and the convenience of town-centre living.



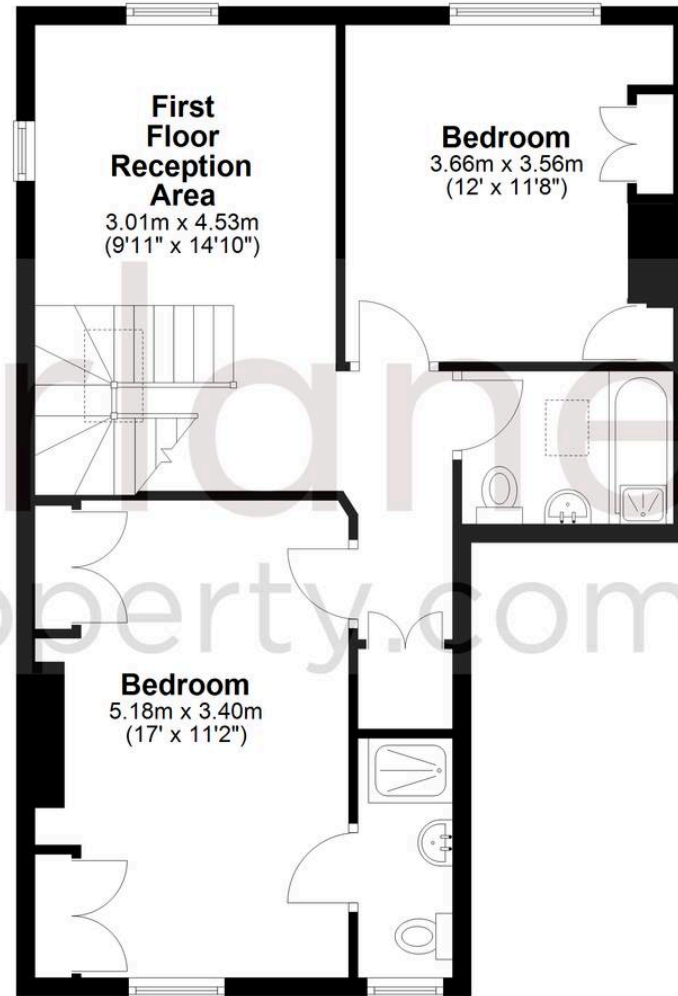
### Ground Floor

Approx. 47.1 sq. metres (506.8 sq. feet)



### First Floor

Approx. 59.8 sq. metres (643.7 sq. feet)



Total area: approx. 106.9 sq. metres (1150.5 sq. feet)

## McFarlane Sales & Lettings

McFarlane Sales & Letting, 106 High Street - SN8 1LT

01672 514380 • marlborough@mcfarlaneproperty.com • www.mcfarlaneproperty.com/

mcfarlane  
property.com