



# Chandlery House

40 Gowers Walk, E1

£2,100 per month  
(£484.62 per week)

A two double bedroom warehouse conversion located on the fringe of the City, offering a spacious open-plan kitchen/reception, two double bedrooms and sizable modern family bathroom.



# Chandlery House

40 Gowers Walk, E1

- TWO BEDROOM
- FURNISHED
- OPEN PLAN
- MODERN BATHROOM



\*Video Viewing Available\* A two double bedroom apartment set within this wonderful warehouse conversion located on the fringe of the City, offering a spacious open-plan kitchen/reception, two double bedrooms and sizable modern family bathroom. The property retains its original features, including solid wood flooring, exposed brick walls and large cross hatch windows throughout. The apartment is conveniently located a short walk from both Brick Lane and Spitalfields Market.

---

**Minimum Term:** 12 months  
**Deposit Required:** £2,423.08  
**Local Authority:** Tower Hamlets  
**Council Tax Band:** D  
**EPC Rating:** C  
**Furnished**

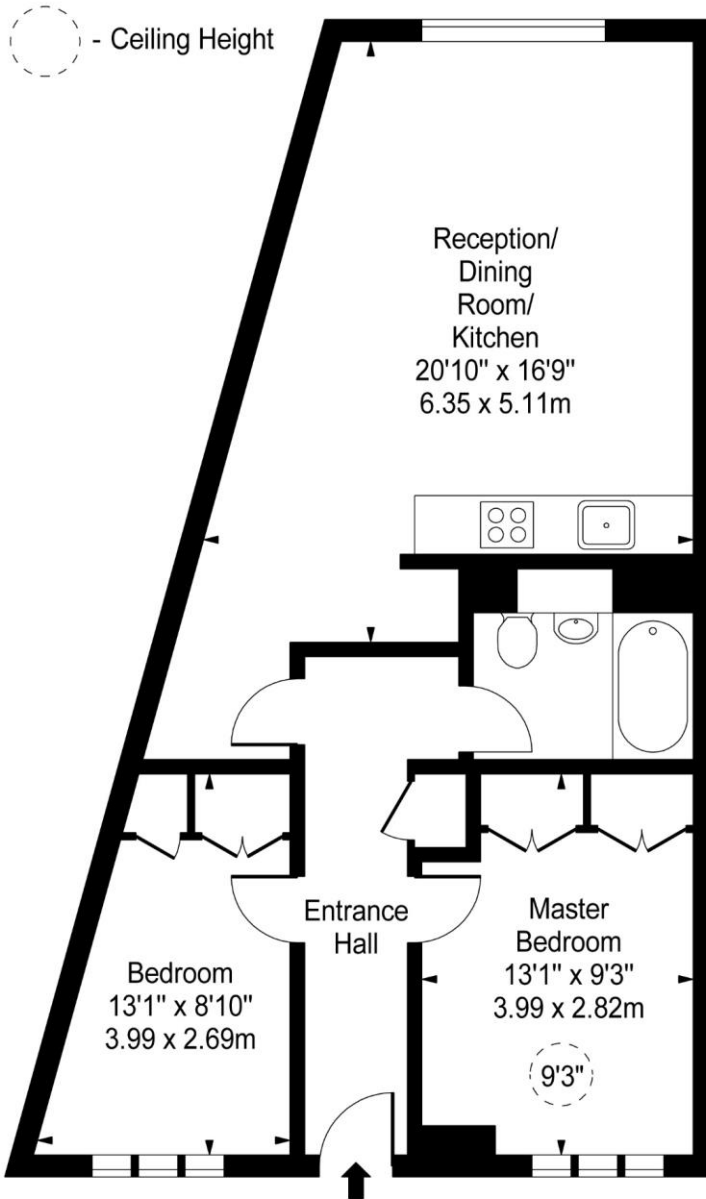
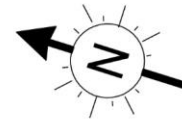
---

### *Chestertons Tower Bridge Lettings*

220 Tower Bridge Road  
Tower Bridge  
London  
SE1 2UP  
lettings.towerbridge@chestertons.co.uk  
02073576911  
chestertons.co.uk

Additional tenant charges apply (fees apply to non-AST tenancies only)  
Tenancy Agreement Fee: £300  
References per Tenant/Guarantor: £60  
Inventory check (approx. £100 – £250 inc. VAT)  
[chestertons.co.uk/property-to-rent/applicable-fees](http://chestertons.co.uk/property-to-rent/applicable-fees)

# Chandlery House, Gowers Walk, E1



Second Floor

Approx Gross Internal Area **657 Sq Ft - 61.04 Sq M**

For Illustration Purposes Only - Not To Scale

[www.goldlens.co.uk](http://www.goldlens.co.uk)

Ref. No. 015092E

