



PENCOEDTRE ROAD

BARRY

PENCOEDTRE ROAD

EAST END, CF63 1SE

GUIDE PRICE

£340,000 -

FREEHOLD



4 Bed



2 Bath



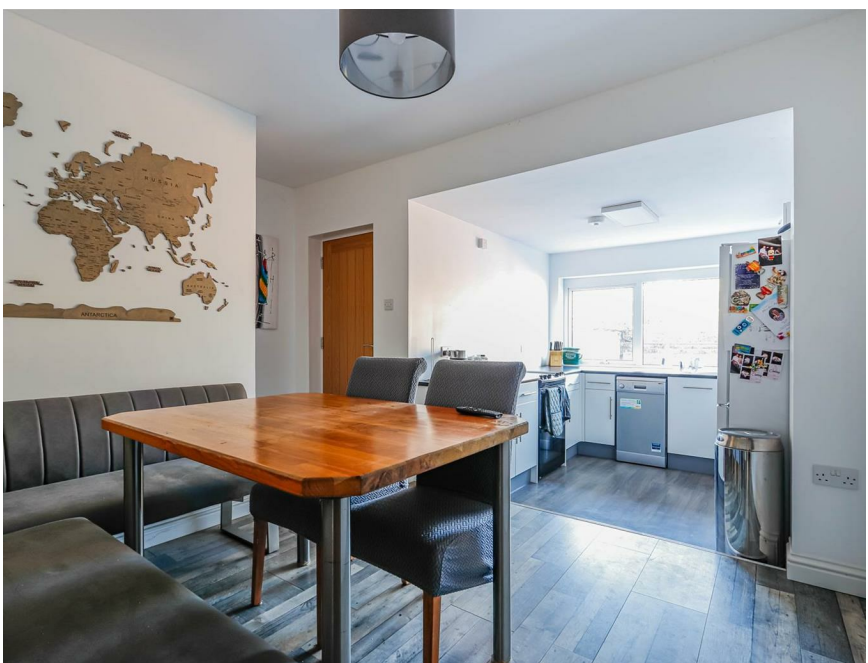
1097.92 sq ft

Positioned along Pencoedtre Road in Barry, this delightful dormer bungalow offers an impressive blend of space, comfort, and modern finishes. The home boasts four super-spacious double bedrooms, making it an excellent choice for families or those needing generous room for guests, hobbies, or a home office.

The inviting reception room provides a warm and versatile space for relaxing or entertaining, while the property currently offers one well-appointed bathroom. Everything has been freshly renovated, giving the home a contemporary feel throughout. The master bedroom features a walk-in wardrobe, and with plumbing already in place, this area can easily be converted into an en-suite if desired.

Outside, the property continues to impress. The flat garden backs onto an open field, offering a peaceful outlook with no overlooking neighbours. A powered and lit garage leads directly into a workshop, providing fantastic storage or workspace options. Parking for up to four cars adds further practicality.

Ideally located close to local amenities, schools, and transport links, this bungalow presents a superb opportunity for buyers seeking a spacious, move-in-ready home in a sought-after area. A viewing is highly recommended to truly appreciate everything this property has to offer.

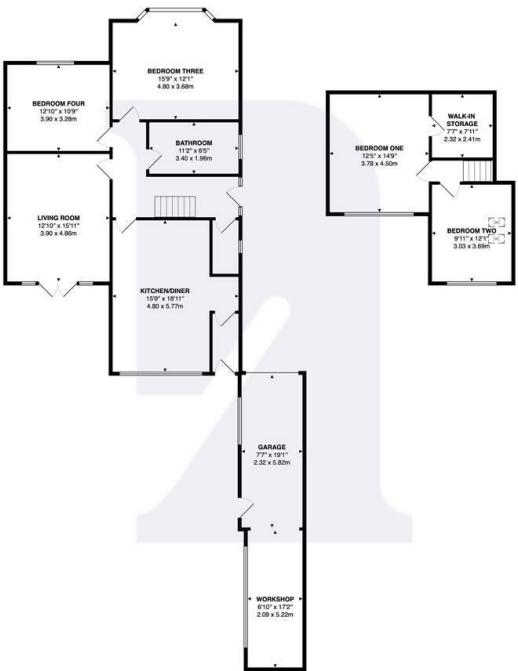




| Energy Efficiency Rating | | |
|---|---------|----------------------------|
| | Current | Potential |
| Very energy efficient - lower running costs | | |
| (92 plus) A | | 81 |
| (81-91) B | | |
| (69-80) C | | |
| (55-68) D | | |
| (39-54) E | | |
| (21-38) F | 40 | |
| (1-20) G | | |
| Not energy efficient - higher running costs | | |
| England & Wales | | EU Directive 2002/91/EC |



The Gazelles, Pencoeudre Road, Barry, CF63 1SE



Total Area: 1716 sq' ... 159.5 m²
All measurements are approximate and for display purposes only

BARRY & THE VALE'S HOME FOR

STYLISH SALES
& LETTINGS



KNIGHTS