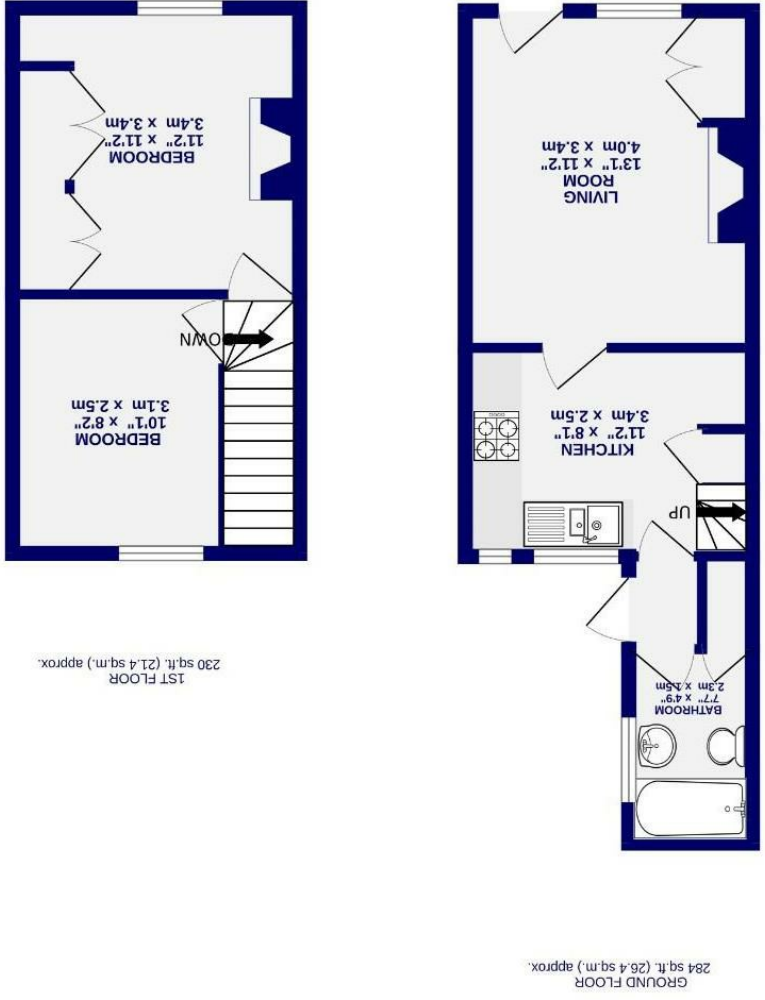


These particulars have been prepared as accurately and as reliably as possible, but should not be relied upon as 'statement of fact'. If there is any point which is of particular importance to you, please contact the office and we would be pleased to check the information. We have not tested any services, appliances, equipment or facilities and nothing in these particulars should be deemed to be a statement that they are in good working order, or that the property is in good structural condition or otherwise. Any statements contained in these particulars are given as a guide only and are not precise. Purchasers must satisfy themselves by inspection or by otherwise regarding the items mentioned above and as to the correctness of each of the areas, measurements, floor plans or distances referred to are given as a guide only and are not precise. Purchasers must satisfy themselves by inspection or by otherwise regarding the items mentioned above and as to the correctness of each of the property on behalf of the vendor. Please note that some images may have been edited with the use of AI. We are legally required to carry out AML checks for all purchasers, sellers and giftors, which become mandatory once an offer has been accepted. There is a non-refundable fee of £30 + VAT per purchaser and per giftor for these checks.

Falconer Street Holgate, York YO24 4JH

- Freehold
- Council Tax Band - A
- Period Victorian Terrace
- Two Double Bedrooms
- Well Maintained
- Ideal First Home
- Enclosed West Facing Courtyard
- Central Location
- No Onward Chain
- EPC D



Falconer Street
Holgate, York
YO24 4JH

£220,000



Located in the ever popular residential area of Holgate, just a short walk from York train station and the city centre, is this much loved period terrace home. With two double bedrooms, original features throughout, and a private west facing courtyard, the property is offered with no onward chain, making it an ideal first home or investment.

Internally, the home offers a generous living room full of charm, retaining period features such as original Victorian cupboards and drawers, picture rails, and a feature fireplace. To the rear is a well proportioned fitted kitchen, offering ample storage via a range of wall and base units, along with some integrated appliances.

Completing the ground floor is a three piece family bathroom.

Upstairs, there are two spacious double bedrooms. The larger bedroom includes built in storage and a feature fireplace.

Outside, the property benefits from a private west facing courtyard, low-maintenance and perfect for enjoying the afternoon sun.

Offered with no onward chain, early viewing is highly recommended.

Council Tax Band A

