

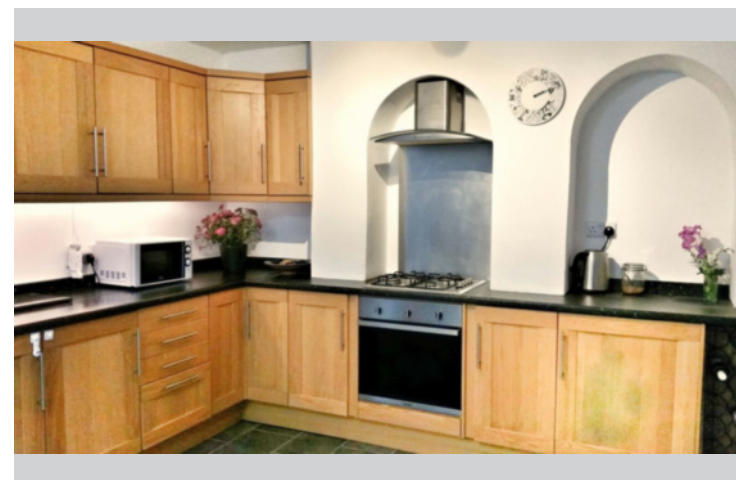




## Commonside, Westbourne



Henry Adams Lettings is pleased to offer a well presented three bedroom semi-detached house set within a short distance from Westbourne village. Accommodation comprises an entrance hall, dining room, large modern kitchen and a living room with double doors leading into the garden. To the first floor there are three well-presented double bedrooms which all benefit from an en-suite bathroom. The gardens are well maintained to the front and rear (gardener included), driveway for one car. Gas central heating, EPC - D



\* Please ask within for details or visit <http://www.henryadams.co.uk/lettings/process-and-fees>