



Fisher House

Copenhagen Street, N1

Asking Price £500,000

A bright and spacious 2 double bedroom, 2-bathroom apartment located on the third floor of an ex-local authority building, benefitting from a private balcony and overlooking Barnard Park.

CHESTERTONS



Fisher House

Copenhagen Street, N1

- 2 double bedrooms
- 2 bathrooms
- Set on the third floor of an ex-local authority development
- Overlooking Barnard Park
- Close to transport links



A bright and spacious 2 double bedroom, 2-bathroom apartment located on the third floor of an ex-local authority building, benefitting from a private balcony and overlooking Barnard Park. The property is modern and well-proportioned comprising; two double bedrooms with the master benefitting from an en-suite shower room; modern family bathroom and a large open-plan kitchen/living room opening to the balcony with fabulous views across Barnard Park. The property sits in a truly delightful enclave to the West of Liverpool Road within the quiet and leafy Barnsbury conservation area affording superb access to Angel Underground station (Northern Line), along with Highbury & Islington station (National Rail and Victoria Line trains). The buzz of Upper Street is only a short walk, alternatively the gastro pubs of the Albion and the Drapers Arms can be found locally within Barnsbury, with the supermarkets of Waitrose and Sainsburys located at the Southern end of Liverpool Road, only moments from the property. Kings Cross/ St Pancras International is only 1 stop on the Underground, ideal for an evening out, getting around London or travelling to Europe. The boutique shops, restaurants and bars of Exmouth Market are also easily accessible.

Tenure: Leasehold 84 years 1 months

Service Charge: £1437

Ground Rent: £10

Local Authority: Islington

Council Tax Band: D

Score	Energy rating	Current	Potential
92+	A		
81-91	B		
69-80	C	75 C	81 B
55-68	D		
39-54	E		
21-38	F		
1-20	G		

Chestertons Islington Sales

327-329 Upper Street

Islington

London

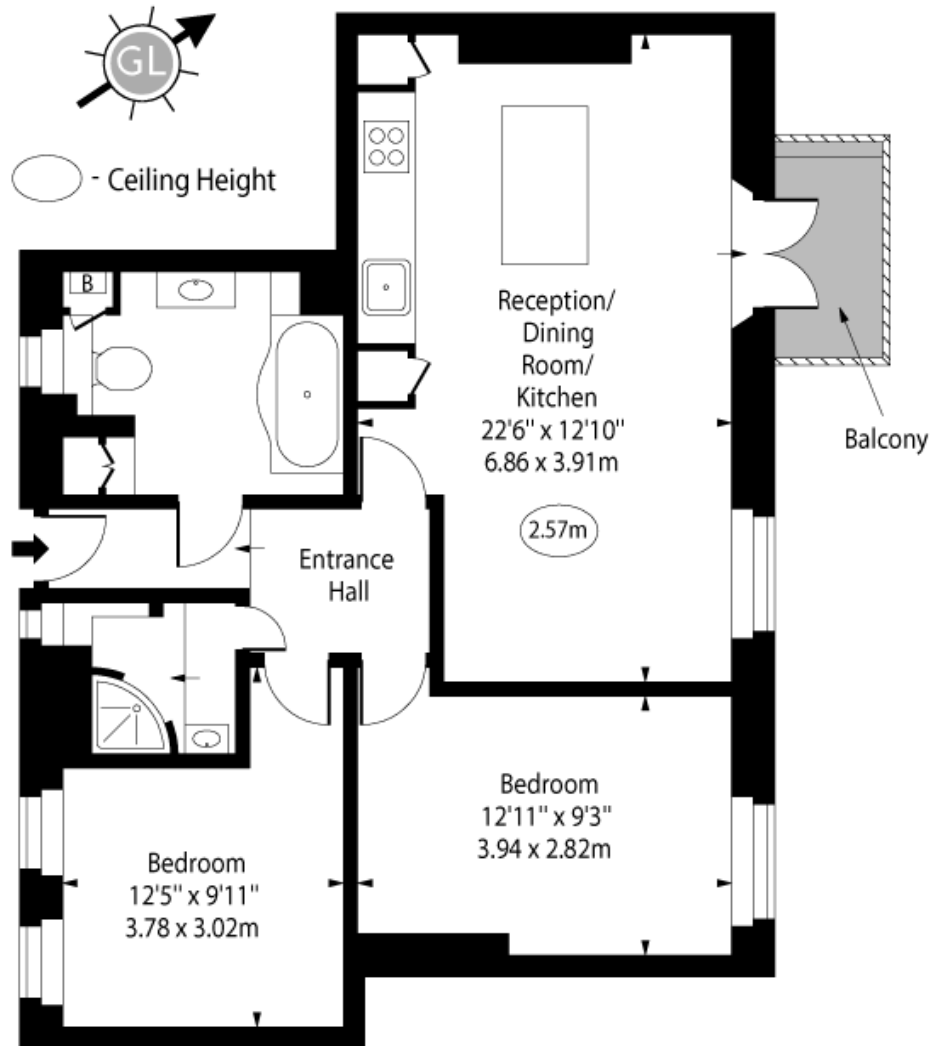
N1 2XQ

islington@chestertons.co.uk

020 7359 9777

chestertons.co.uk

Fisher House,
Copenhagen Street, N1



Third Floor

Approx Gross Internal Area 690 Sq Ft - 64.10 Sq M

Every attempt has been made to ensure the accuracy of the floor plan shown. However, all measurements, fixtures, fittings, and data shown are approximate interpretations and for illustrative purposes only. Measured according to the RICS. Not To Scale.

www.goldlens.co.uk

Ref. No. 031734K

