



## Alverstone Road, KT3

£825,000

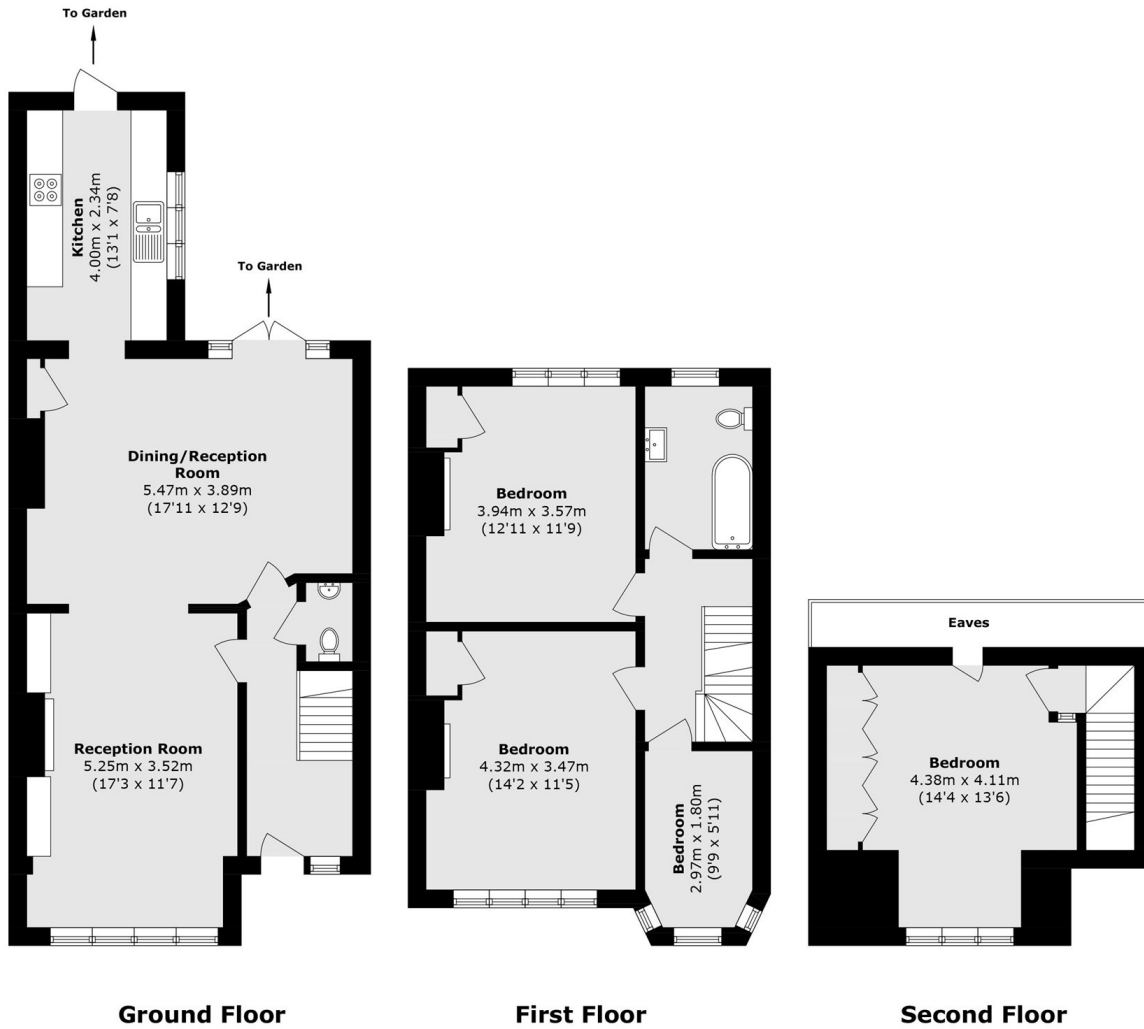
A chance to buy a large period family home, the property offer lovely bright space through in a grand setting. The property has four good sized bedrooms, two generous reception rooms and a good size private garden with potential to extend STTPS.

Alverstone Road is in catchment for Burlington School and close to New Malden High Street. On the High Street, there is a wide range of local amenities, including restaurants and shops. Easy access to the A3 with excellent access either in or out London.

### Features

- Period Home
- Four Double Bedrooms
- Two Reception Rooms
- Great Condition
- Private Garden
- Great Location

# Alverstone Road, New Malden, KT3



Total area (approx.): 126.3 sq. m (1359.4 sq. ft)  
(Excluding Eaves)