



## Hanworth Road, TW12

£750,000

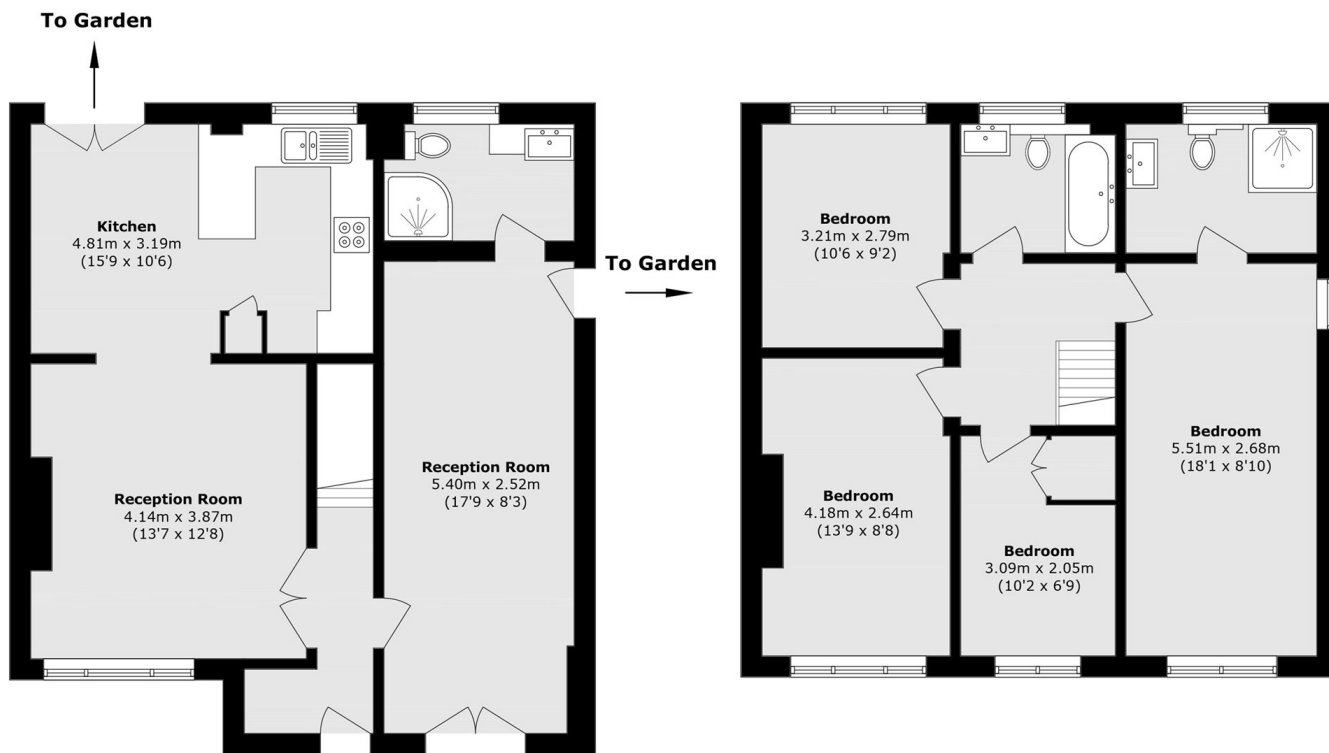
An immaculately presented four bedroom, three bathroom, semi detached home coming with plenty of stylish living space. Two generous reception rooms and a modern kitchen opening onto the garden make this excellent for entertaining.

Hanworth Road is in a prime location to benefit from the local schools, both state and private. Hampton Village, Hampton train station, Bushy Park and Hampton Hill High Street are all nearby.

### Features

- Four Bedrooms
- Three Bathrooms
- Semi Detached
- Off Street Parking
- Large Private Garden
- Well Located

# Hanworth Road, Hampton, TW12



**Ground Floor**

**First Floor**

Total area (approx.): 120.3 sq. m (1294.9 sq. ft)