



Plot 352 Curtis Fields 72 Bramble Road  
Weymouth, DT4 0TS

**£287,500 Freehold**

 2  1  1  B

## Plot 352 Curtis Fields 72

Weymouth, Dorset

CURTIS FIELDS. Plot 352. The property is a IRIS house type. Comprising of a Two double bedroom semi detached house. Internally there is a lounge with French Doors opening onto a full width patio and a larger sized rear garden, a contemporary kitchen supplied by Howdens with built in appliances including AEG oven, AEG 4 ring induction hob and an integrated dish washer plus. On the first floor are two double bedrooms plus a family bathroom, virtual tour available (plots may vary). All properties come with a 10 year NHBC warranty, gas central heating, UPVC double glazed windows, and LVT flooring to the ground floor included supplied by Top Mark in Weymouth. Plot 352 is scheduled for occupation summer 2026. N.B. There is a site service charge of £295 per annum. Photos shown are of a similar property.

### Entrance Hall

#### Cloakroom

5'10" x 4'7" (1.80 x 1.40)

Wash hand basin set in to cabinet, WC with concealed cistern

#### Lounge

16'4" x 11'5" (5.00 x 3.50)

French doors to patio and larger sized rear garden

#### Kitchen

14'1" x 7'6" (4.30 x 2.30)

Contemporary range of kitchen units with appliances including AEG 4 ring induction hob, cooker hood, AEG electric oven, integrated dishwasher, + Plumbing for washing machine and space for Fridge freezer

#### Landing

Airing Cupboard housing gas boiler

#### Bedroom 1

11'5" x 12'9" (3.50 x 3.90)

#### Bedroom 2

14'1" x 8'10" (4.30 x 2.70)

#### Bathroom

7'2" x 6'6" (2.20 x 2.00)

White suite with panel bath with shower and screen above, wash hand basin set in to cabinet, wc with concealed cistern, towel radiator

#### Outside

Small garden to front plus Gate to the side leading to an enclosed rear garden with patio across the house with the remainder to turf and with fenced surround, there will be outside lighting, a water tap and power points





### **Car Parking**

Driveway parking for two cars to the side

### **Construction**

The property is traditionally built with cavity walls with a rendered elevations under a pitched roof.

The properties are built to comply with modern building regulations with mobility access

### **Service Charge**

Site service charge of £295 managed by Curtis Fields Management Company

### **Council Tax**

To be assessed

### **Covenants**

A list of the Curtis Fields Covenants is available on request

### **Photo Voltaic Roof Panels**

There are Photo Voltaic panels to the roof which will belong to the property

### **Utility Supplies**

Mains gas, electricity, water and drainage connected, Water supply is metered

### **Phone and Broadband signal strength and coverage**

Mobile phone signals are strong for Vodafone, 3 & O2 average for EE, Internet and broadband not yet connected so not yet assessed

### **Flood Risk**

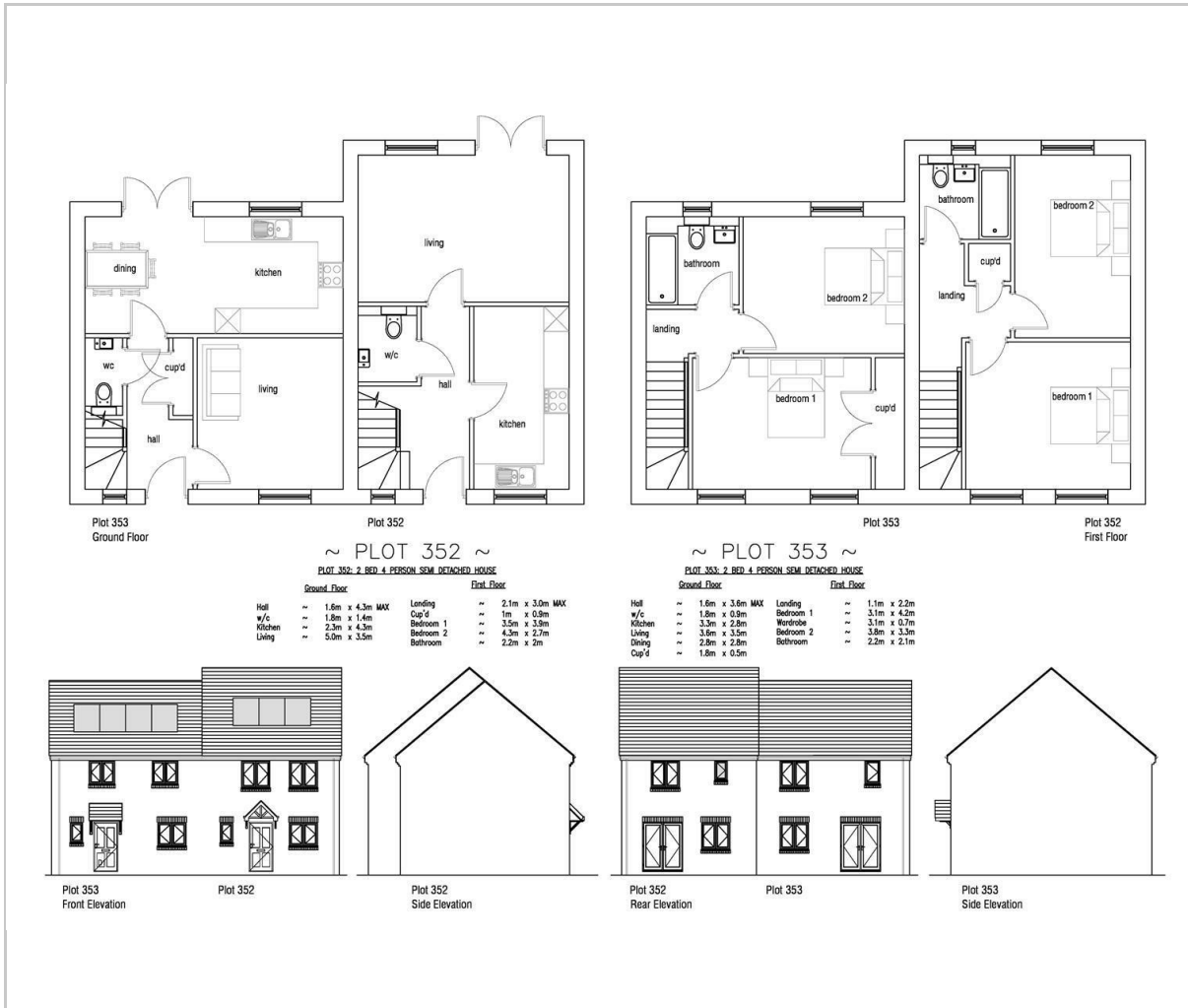
No Low Risk of flooding from rivers or sea  
Medium Risk from surface water

### **Legal Disclaimer**

These particulars, whilst believed to be accurate are set out as a general outline only for guidance and do not constitute any part of an offer or contract. Intending purchasers should not rely on them as statements of representation of fact, but must satisfy themselves by inspection or otherwise as to their accuracy. All measurements are approximate. Any details including (but not limited to): lease details, service charges, ground rents & covenant information are provided by the vendor and you should consult with your legal advisor/ satisfy yourself before proceeding. No person in this firm's employment has the authority to make or give any representation or warranty in respect of the property.



## Floor Plan



## Viewing

Please contact our Hull Gregson & Hull Weymouth Office on 01305 776 666 if you wish to arrange a viewing appointment for this property or require further information.

These particulars, whilst believed to be accurate are set out as a general outline only for guidance and do not constitute any part of an offer or contract. Intending purchasers should not rely on them as statements of representation of fact, but must satisfy themselves by inspection or otherwise as to their accuracy. All measurements are approximate. Any details including (but not limited to): lease details, service charges, ground rents & covenant information are provided by the vendor and you should consult with your legal advisor/ satisfy yourself before proceeding. No person in this firms employment has the authority to make or give any representation or warranty in respect of the property.

35 St Thomas Street, Weymouth, DT4 8EJ  
 Tel: 01305 776 666 Email: [property@hgh.co.uk](mailto:property@hgh.co.uk) [www.hgh.co.uk](http://www.hgh.co.uk)

## Area Map



## Energy Efficiency Graph

