



MARCUS STREET, SW18

£550,000

Two bedrooms
Exceptional Finish
No Chain
Private Garden
Wandsworth Town
Energy rating: c.

@marshandparsons
marshandparsons.co.uk

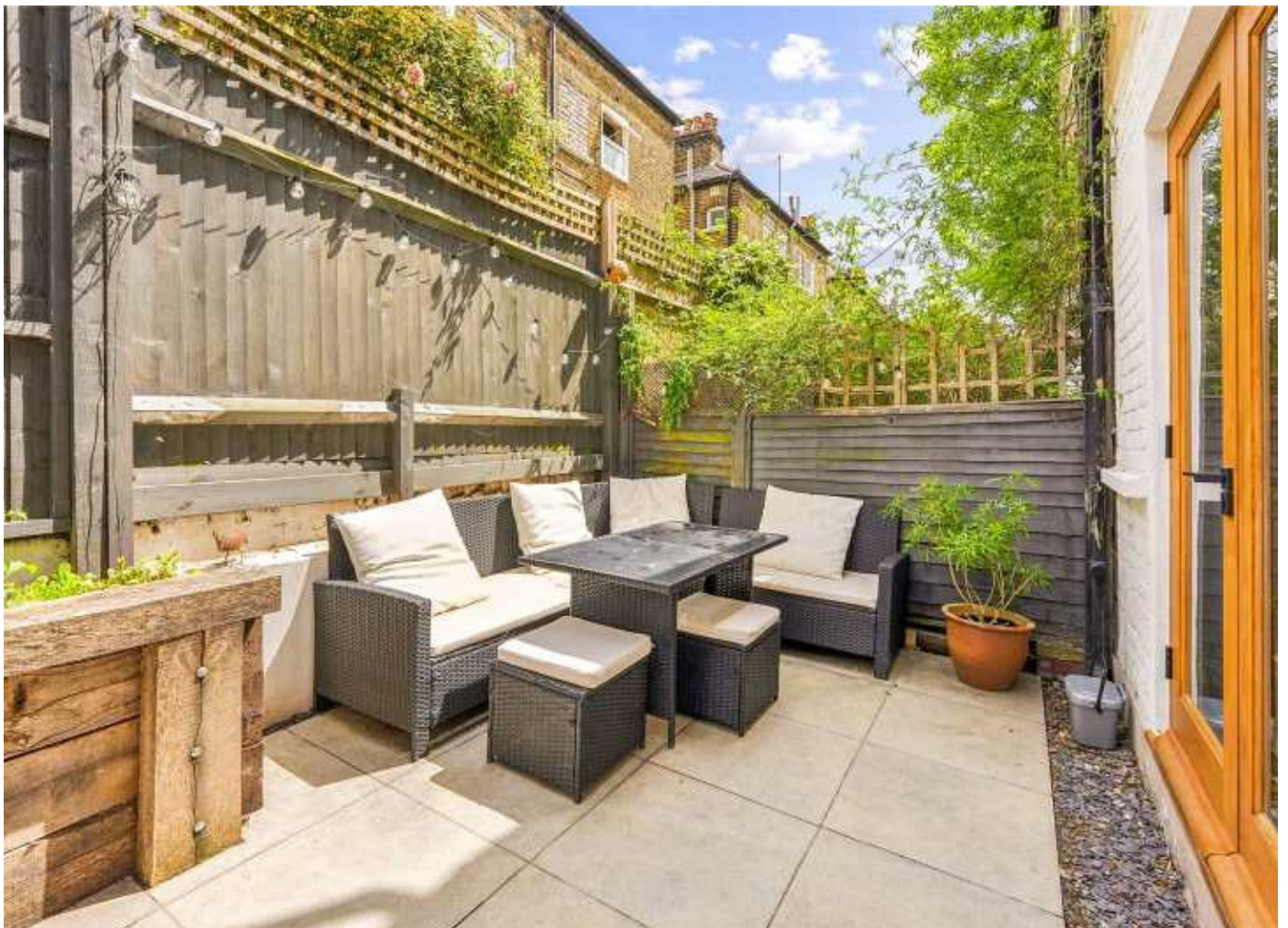
MARSH &
PARSONS



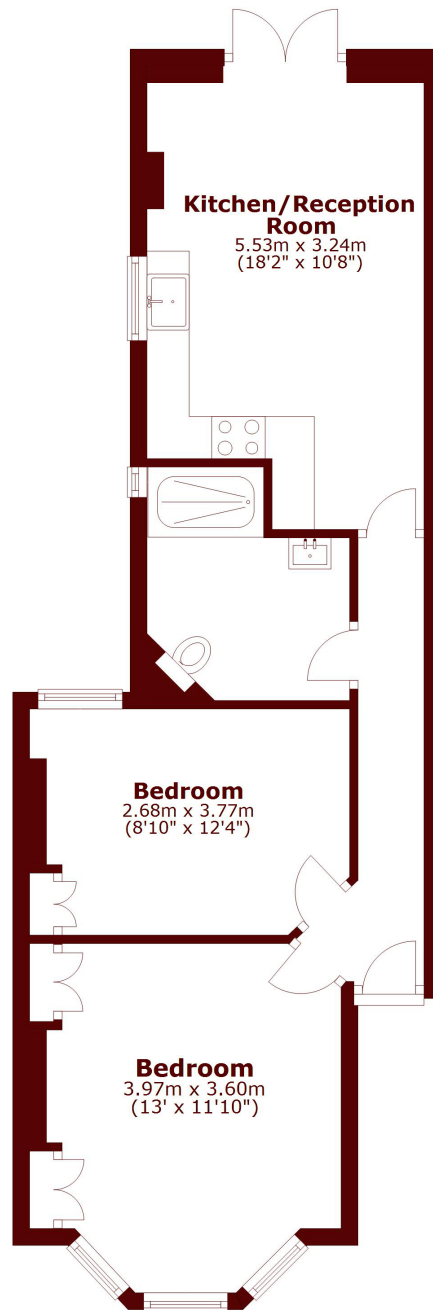
ABOUT THE PROPERTY

This beautiful garden flat has been finished to an exceptional standard throughout. Featuring exposed brickwork and beams, complimented by the the parquet flooring, there is an incredible entertaining space to the rear which leads onto a private west facing garden.

Marcus Street is a quite street, located closely to the many shops, bars and restaurants of Wandsworth Town, also providing easy access both in and out of London via Wandsworth Town Station.



STEP INSIDE MARCUS STREET



Total area: approx. 52.5 sq. metres (564.9 sq. feet)

Battersea
020 7326 9920

Energy Rating: C We aim to make our particulars both accurate and reliable. However, they are not guaranteed; nor do they form part of an offer or contract. If you require clarification on any points then please contact us, especially if you're traveling some distance to view. Please note that appliances and heating systems have not been tested and therefore no warranties can be given as to their good working order

**MARSH &
PARSONS**