

Wymering Road, W9

£1,061 Per week

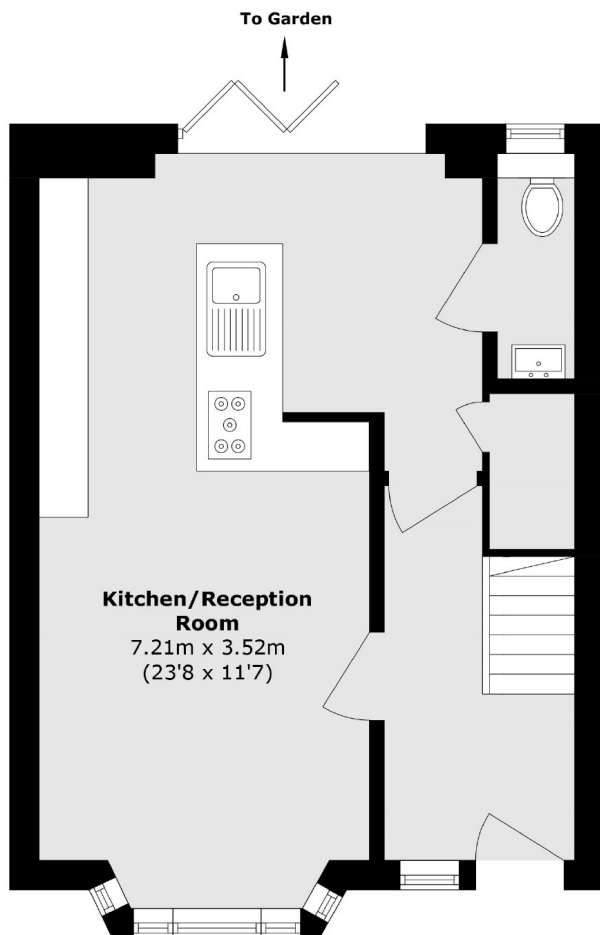
Finished to a high standard throughout, this three bedroom family house has a large open-plan living area leading to a rear private garden, stylish bathroom as well as an additional WC.

Wymering Road is located in the heart of Maida Vale and only moments from the green open spaces of Paddington Recreational Ground, whilst also being within easy reach of the trendy shops, bars and cafés of Elgin Avenue and Shirland Road. Transport links include Maida Vale Underground Station (Bakerloo Line).

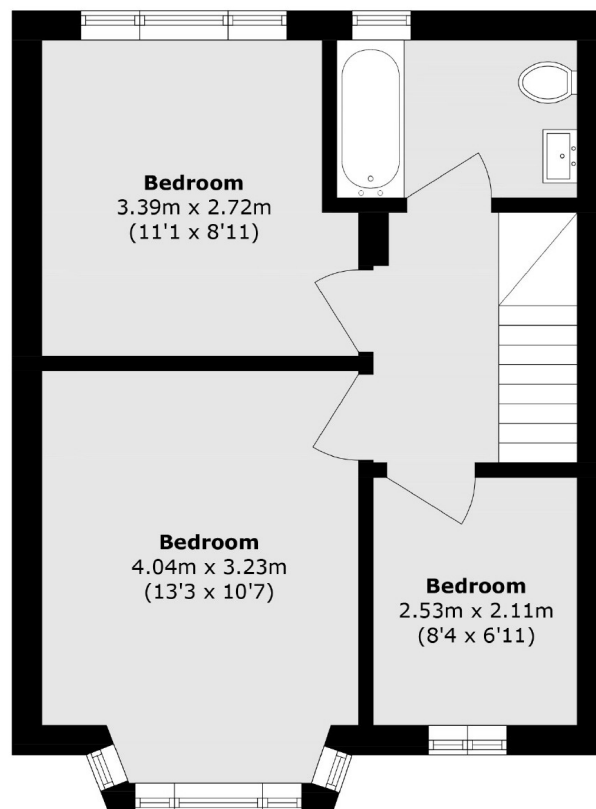
Features

- Three Bedrooms
- Private Garden
- Additional WC
- Terraced House
- Modern Throughout
- Great Location

Wymering Road, Maida Vale, W9



Ground Floor



First Floor

Total area (approx.): 79.7 sq. m (897.8 sq. ft)