



Craven Terrace, W2

£345 Per week

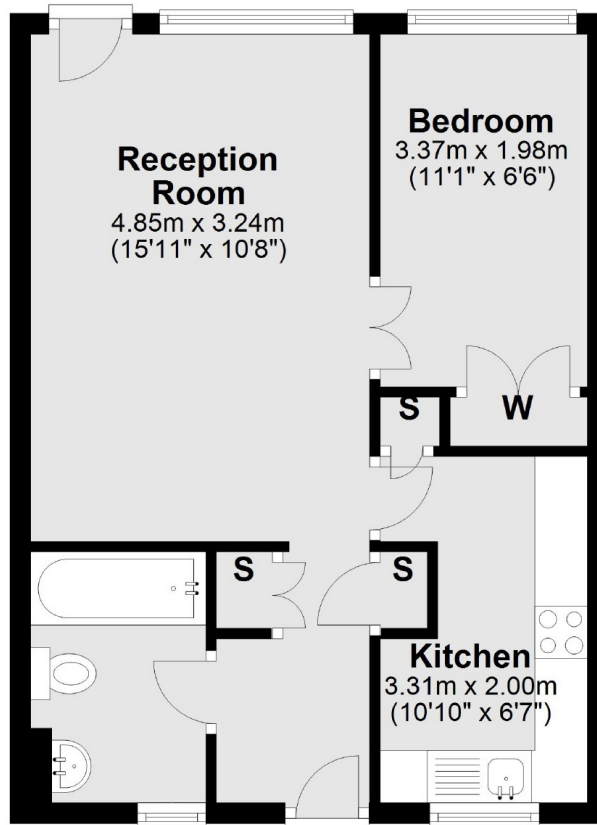
A charming one bedroom apartment located on the ground floor of a popular development tucked just behind Hyde Park. The property is perfect for a professional single or couple looking for an easy commute into town.

The property is located within the popular Craven Village and provides easy access to the vast green space of Hyde Park.

Features

- One Bedroom Apartment
- Separate Kitchen
- Wood Flooring
- Neutral Decor
- Private Development
- Hyde Park

Craven Terrace, London, W2



First Floor

Total area: approx. 39.1 sq. metres (420.8 sq. feet)

Contact

To arrange a viewing call our office on the number below or visit our website.



Energy Rating: D. We aim to make our particulars both accurate and reliable. However they are not guaranteed; nor do they form part of an offer or contract. If you require clarification on any points then please contact us, especially if you're traveling some distance to view. Please note that appliances and heating systems have not been tested and therefore no warranties can be given as to their good working order.