



ELMIRA STREET, SE13

£400,000

Two double bedrooms
Two bathrooms
Balcony off lounge
70 Square metres
Communal roof terrace
Energy rating: c

@marshandparsons
marshandparsons.co.uk

MARSH &
PARSONS



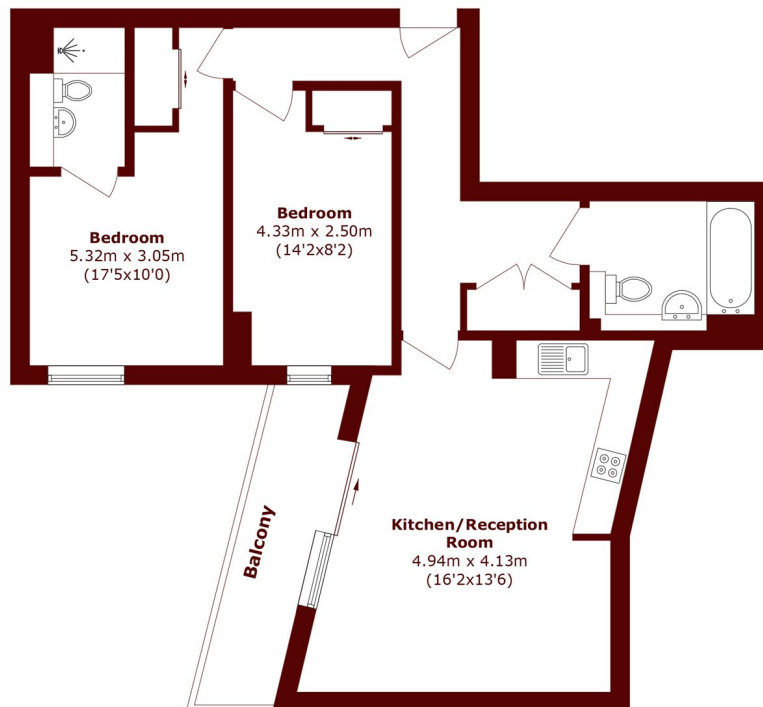
ABOUT THE PROPERTY

At 70 Square Metres this is one of the larger style two bedroom apartments in the popular Renaissance Development found in the hub of activity in Lewisham. This home has a pleasing layout and does need to be seen to appreciate the non typical configuration. There is a great size open plan living area with inward development facing balcony and two great size bedrooms, one with en suite.

Venice Corte features three large well maintained communal roof gardens. The location for commuters is awesome with Lewisham Station & DLR within a couple of hundred metres.



STEP INSIDE ELMIRA STREET



Total area (approx.): 70.2 sq. m (755.6 sq. ft)

Balcony area (approx.): 4.4 sq. m (47.4 sq. ft)

Brockley
020 8629 8164

Energy Rating: C We aim to make our particulars both accurate and reliable. However, they are not guaranteed; nor do they form part of an offer or contract. If you require clarification on any points then please contact us, especially if you're traveling some distance to view. Please note that appliances and heating systems have not been tested and therefore no warranties can be given as to their good working order

**MARSH &
PARSONS**