

Newton Mansions

West Kensington, London, W14

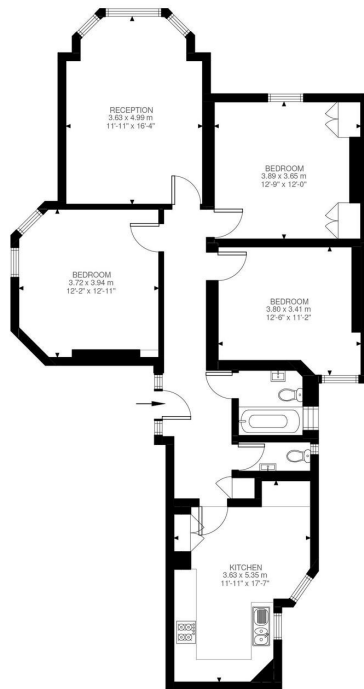




Newton Mansions

West Kensington, London, W14

Price Guide: £895,000



Ground Floor
1025 IP

Queens Club Gardens, W14
Approximate Gross Internal Area
95.20 SQ.M / 1025 SQ.FT

A well-proportioned three bedroom ground floor apartment set within the highly sought after Newton Mansions, located in the heart of the prestigious Queens Club Gardens development.

Extending to approximately 1,025 sq. ft. (95.2 sq. m), the property offers a generous and well balanced layout and is presented in good condition throughout, making it ready for immediate occupation while still offering scope for personalisation if desired.

The accommodation comprises a bright reception room with a charming bay window, providing an excellent entertaining space with views towards the gardens. There are three well sized bedrooms, all offering good proportions and natural light. The property also benefits from a separate fitted kitchen measuring approximately 17'7" in length, providing ample space for cooking and storage.

Further accommodation includes a family bathroom, separate WC, and a welcoming entrance hallway that connects the rooms efficiently and enhances the sense of space throughout the apartment.

Ground floor | Sought after Queens Club Mansions | Three Bedrooms | Separate WC
Access to the private communal gardens and tennis courts of Queens Club Gardens
Share of Freehold | 1025 Sq. Ft (95.20 Sq. M)

All viewings by appointment through our **West Kensington Office:**

T: 020 7385 5020
E: westken@lawsonrutter.com

1 Barons Court Road, London
W14 9DP
www.lawsonrutter.com

In accordance with the Property Misdescription Act 1991, we wish to emphasise that the information given in these particulars is intended to help you decide whether you wish to view this property. Whilst every care is taken to ensure the accuracy of these particulars please note that all measurements are approximate and we are, for the accuracy of other information, reliant on what the seller has provided. We strongly recommend that you rely on your own inspections and those of your advisors to establish the details of any aspects which are of particular importance. Please note that we have not undertaken any survey of the property or the appliances within it and the buyer must rely on their own investigations prior to exchange of contracts.

Full Energy Performance Certificate available on request

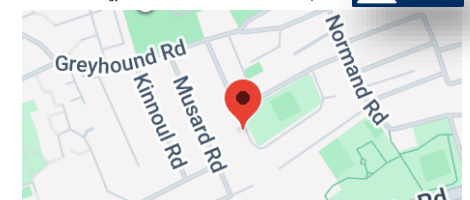


Illustration for identification purposes only. Not to scale.
Floor Plan Drawn According To RICS Guidelines.



BRITISH
PROPERTY
AWARDS
2023

GOLD WINNER

ESTATE AGENT
IN W6



BRITISH
PROPERTY
AWARDS
2023

GOLD WINNER

ESTATE AGENT
IN W14