



1301 1 Pan Peninsula Square, London, E14 9HD

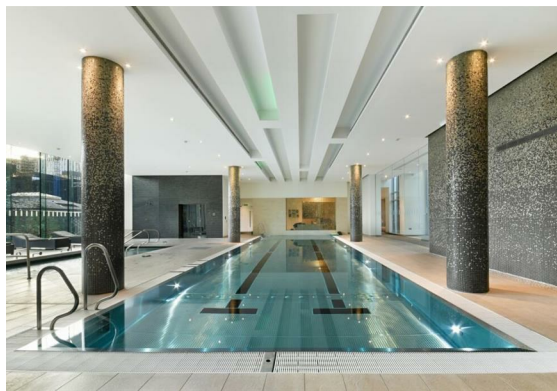
£568 Per week

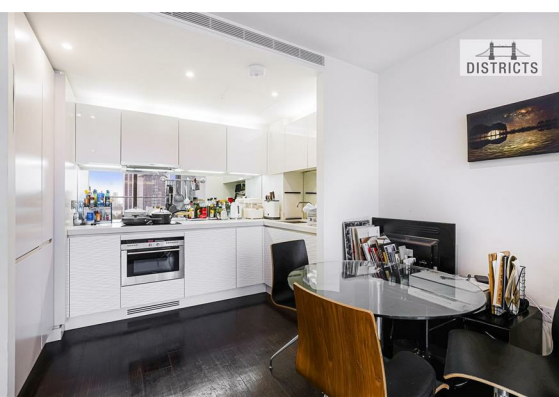
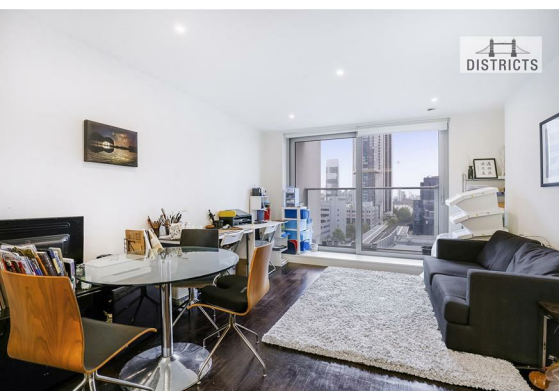
 1  1  1  B

Great Views | Comfort Cooling | Bright Interiors | Contemporary Finish | Residents' Gym | 24 Hour Concierge | Variety of Restaurants | Spacious | Chain free | Smart Fitted Kitchen | Fitted Wardrobes

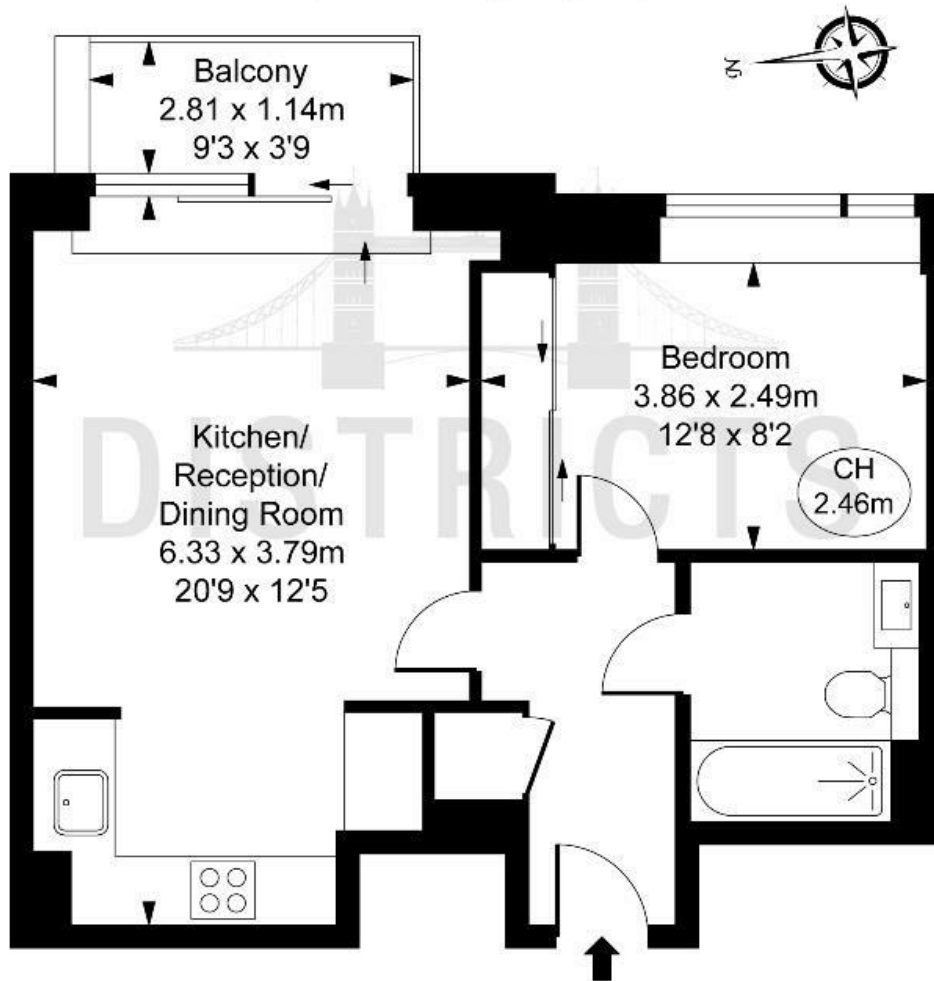
Located few moments from the heart of London's fastest growing business district, Pan Peninsula is incredibly well connected with direct access to South Quay DLR station, 7 minutes to Canary Wharf Underground Station and Crossrail (The Elizabeth Line). Residents enjoy a luxury city lifestyle as they immerse themselves in what Pan Peninsula has to offer, providing fantastic facilities including a state-of-the-art gym, a swimming pool, screening room and 24 hr Concierge Service.

- Electricity supply – Mains | Water supply – Mains | Sewerage – Mains | Heating – Underfloor heating & Comfort cooling and heating
- To check broadband and mobile phone coverage please visit Ofcom here <https://www.ofcom.org.uk/phones-telecoms-and-internet/advice-for-consumers/advice/ofcom-checker>
- EPC Rating: B
- Council Tax, Tower Hamlets Band F
- Lift access | Cladding: EWS1 Certificate available





Approximate Gross Internal Area  
**43.06 sq m / 463 sq ft**  
 ( CH = Ceiling Heights )



This plan is not to scale. It is for guidance and not for valuation purposes.  
 All measurements and areas are approximate only, and have been prepared in accordance with the current edition of the RICS Code of Measuring Practice.  
 © Fulham Performance

Energy Efficiency Rating		Current	Potential
Very energy efficient - lower running costs			
(92 plus) <b>A</b>			
(81-91) <b>B</b>		<b>82</b>	<b>83</b>
(69-80) <b>C</b>			
(55-68) <b>D</b>			
(39-54) <b>E</b>			
(21-38) <b>F</b>			
(1-20) <b>G</b>			
Not energy efficient - higher running costs			
<b>England &amp; Wales</b>		EU Directive 2002/91/EC	

These particulars, whilst believed to be accurate are set out as a general outline only for guidance and do not constitute any part of an offer or contract. Intending purchasers should not rely on them as statements of representation of fact, but must satisfy themselves by inspection or otherwise as to their accuracy. No person in this firm's employment has the authority to make or give any representation or warranty in respect of the property.