



Jordan fishwick

Buxton Road New Mills High Peak



Buxton Road New Mills High Peak SK22 3JT

£280,000



The Property

Arranged over four floors, a truly deceptive and well presented, stone built terraced home. Spacious, versatile, characterful accommodation with two generous bedrooms plus a useful loft room with great head height and Velux windows. Fine rear views, walled frontage and enclosed private garden. Pvc double glazing, gas central heating and comprising: entrance hall, living room, dining room with French doors and Juliet balcony, lower ground floor breakfast kitchen, wc and workshop/store, two first floor bedrooms, bathroom with white suite and a loft room. Convenient location for Newtown railway station and viewing advised.



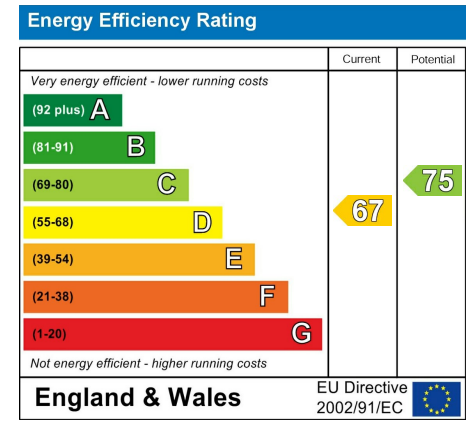
- Characterful Stone Built Mid Terrace
- Convenient Location
- Two Bedrooms Plus Loft Room With Great Head Height and Velux Windows
- Arranged Over Four Floors
- Well Presented Throughout
- Juliet Balcony
- Private Gardens
- Living Room and Dining Room
- Useful Workshop and Second WC

Postcode SK22 3JT

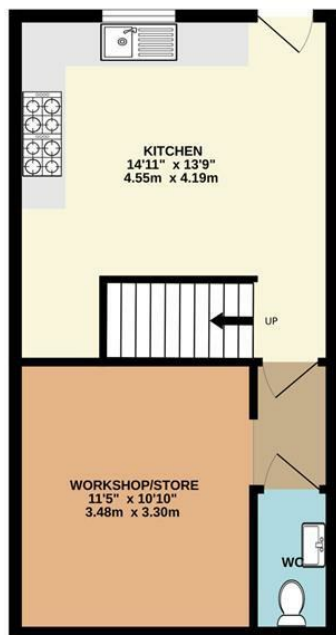
EPC Rating D

Local Authority High Peak

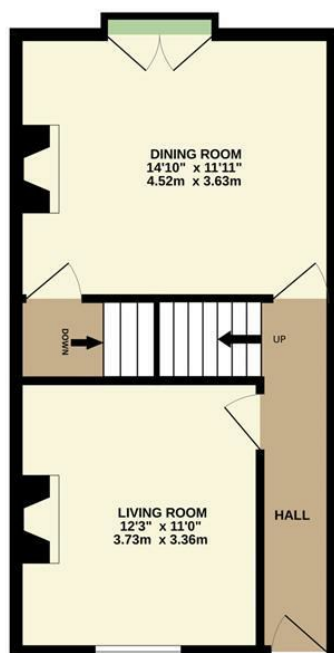
Council Tax B



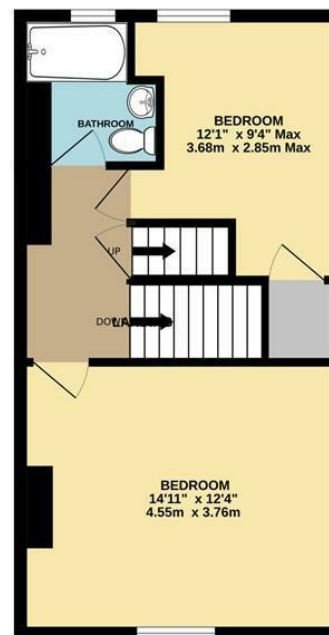
LOWER GROUND FLOOR



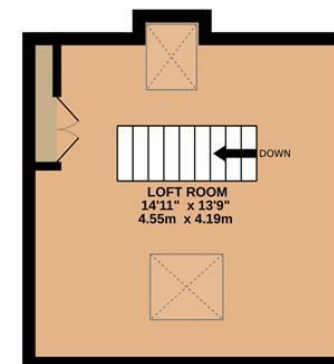
GROUND FLOOR



1ST FLOOR



2ND FLOOR



Whilst every attempt has been made to ensure the accuracy of the floorplan contained here, measurements of doors, windows, rooms and any other items are approximate and no responsibility is taken for any error, omission or mis-statement. This plan is for illustrative purposes only and should be used as such by any prospective purchaser. The services, systems and appliances shown have not been tested and no guarantee as to their operability or efficiency can be given.
 Made with Metropix ©2026



These particulars are believed to be accurate but they are not guaranteed and do not form a contract. Neither Jordan Fishwick nor the vendor or lessor accept any responsibility in respect of these particulars, which are not intended to be statements or representations of fact and any intending purchaser or lessee must satisfy himself by inspection or otherwise as to the correctness of each of the statements contained in these particulars. Any floorplans on this brochure are for illustrative purposes only and are not necessarily to scale.

Offices at: Chorlton, Didsbury, Disley, Hale, Glossop, Macclesfield, Manchester Deansgate, Manchester Whitworth Street, New Mills, Sale, Wilmslow and Withington

14 Market St, Disley, Cheshire, Stockport SK12 2AA

01663 767878

disley@jordanfishwick.co.uk

www.jordanfishwick.co.uk