



Drayton Road, NW10

£350,000

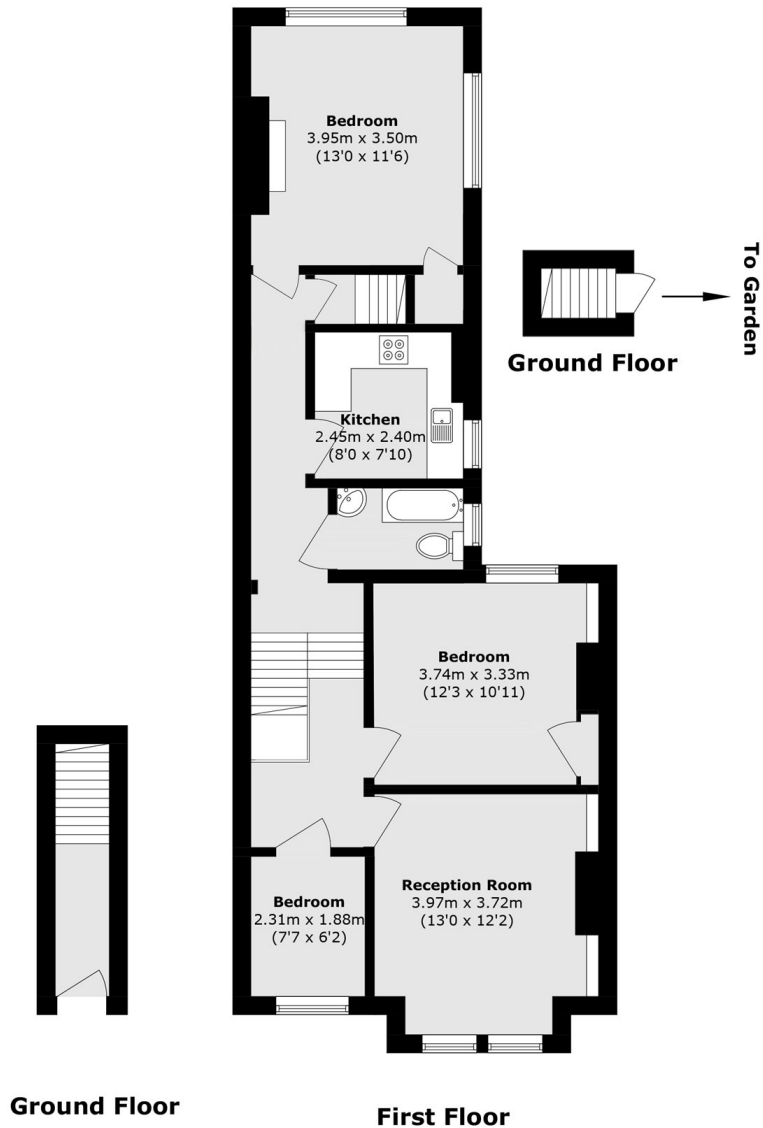
A spacious three bedroom first floor flat with its own entrance and access to a rear garden. The property has a south west facing reception room, a separate kitchen, has the potential to be extended, and is available chain-free.

Drayton Road is a residential street located next to Roundwood Park, and in close proximity to the shops and amenities in Harlesden. Transport links include Harlesden (Bakerloo & Overground) and Willesden Junction (Bakerloo & Overground).

Features

- Three Bedrooms
- Separate Kitchen
- Garden
- Own Entrance
- Potential To Extend
- Chain-Free

Drayton Road, London, NW10



Total area (approx.): 77.4 sq. m (833.1 sq. ft)